

PLAT DEDICATION

KNOW ALL MEN BY THESE PRESENTS:- That Sturgeon Island, a Corporation existing under the Laws of the State of Minnesota, being the owner of Lots 103 to 110 inclusive and vacated Circle Place of the plat of Sturgeon Island as the same is recorded in the office of the Register of Deeds in and for the County of Pine, at Pine City, Minnesota, being desirous of rearranging these lots as shown hereon have caused the same to be surveyed and this plat to be made in accordance with the statutes in such cases made and provided, NOW THEREFORE, we do ratify and confirm, in all respects, said survey and plat thereof as "1971 REARRANGEMENT OF LOTS 103 TO 110 INCLUSIVE OF STURGEON ISLAND".

IN WITNESS WHEREOF:- We hereunto set our hands and seal this 15th day of November, A.O., 1972.

Signed in Presence of: [Signature] Corporate Owners
Sturgeon Island, Incorporated
By [Signature] President James A. Waldhalm
By [Signature] Secretary-Treasurer Fred V. Johnson

STATE OF MINNESOTA)
COUNTY OF Pine)
On this 15 day of Nov, 1972, before me, a Notary Public within and for said County, personally appeared James A. Waldhalm and Fred V. Johnson to me personally known, who, being each by me duly sworn did say that they are respectively the President and Secretary-Treasurer of Sturgeon Island, Incorporated, the Corporation named in the foregoing instrument, and that the seal affixed to said instrument was signed and sealed in behalf of said Corporation by authority of its Board of Directors and said James A. Waldhalm and Fred V. Johnson, Sturgeon Island, Incorporated, acknowledged said instrument to be the free act and deed of said Corporation.

[Signature]
Notary Public, Pine County, Minnesota
My commission expires May 24, 1975

STATE OF MINNESOTA)
COUNTY OF CARLTON)
I, Neubert W. Swanson, hereby certify that I am a Registered Land Surveyor, in the State of Minnesota, and have, at the request of the proprietors thereof, made a careful survey of the property described in the foregoing certificate of proprietors and have platted the same into Lots, as more fully appears on the annexed entitled plat of "1971 REARRANGEMENT OF LOTS 103 TO 110 INCLUSIVE OF STURGEON ISLAND". The plat is a true and correct representation of the field survey, all distances are correctly shown in feet and decimals of feet on the plat, monuments for the guidance of future surveys have been correctly placed in the ground as shown, the outside boundary lines are correctly designated, there are no wet lands, rivers, streams, lakes, highways, or thoroughfares opened or traveled existing before the platting, other than shown.

[Signature]
Neubert W. Swanson
Registered Land Surveyor No. 5709

Subscribed and sworn to before me this 12th day of October, A.O., 1972.

[Signature]
Notary Public, Carlton County, Minnesota
My commission expires Oct. 14, 1976

Approved as to form and execution, this 14th day of December, A.O., 1972.

[Signature]
County Attorney

We hereby certify that the annexed plat was approved and accepted at a regular meeting of the Board of County Commissioners of Pine County, Minnesota, this 15 day of August, 1972.

[Signature]
Chairman, County Board
[Signature]
Auditor

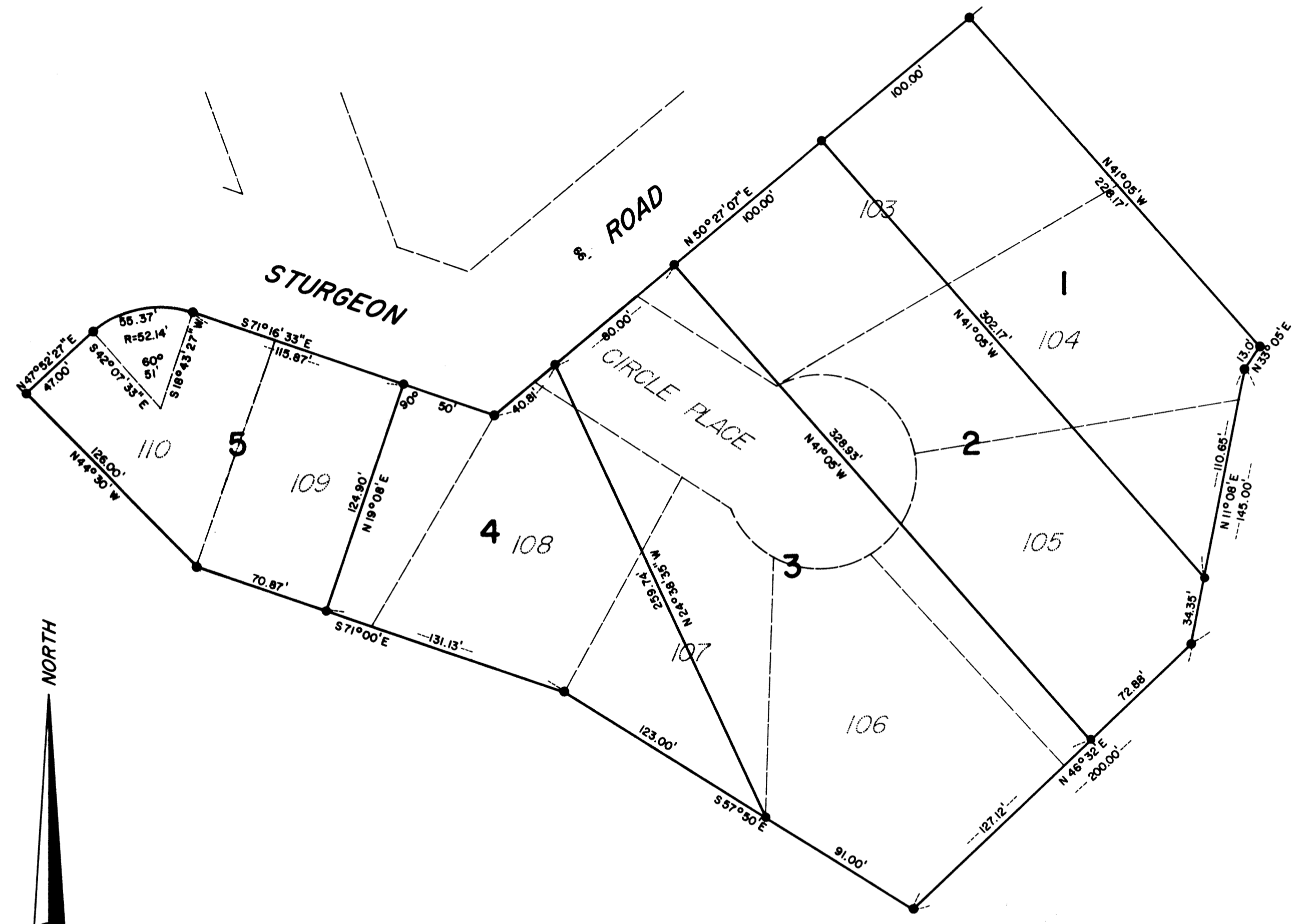
The Sturgeon Lake State Bank, a Corporation existing under the laws of the State of Minnesota, does hereby ratify and confirm, in all respects, the survey and this plat of "1971 REARRANGEMENT OF LOTS 103 TO 110 INCLUSIVE OF STURGEON ISLAND". IN TESTIMONY WHEREOF, the said Corporation has caused these presents to be executed in its corporate name by the President and Assistant Cashier and its corporate seal to be hereunto affixed this day of , 1972.

In Presence of:
[Signature] Kenneth F. Gay President
[Signature] Stanley Almos Assistant Cashier

I hereby certify that the taxes for the year 1972 on the property described herein are paid
[Signature]
County Treasurer, Pine County

I hereby certify that the taxes for the year 1971 and all prior years on the property described herein are paid
[Signature]
County Auditor, Pine County

Filed as Microfilm No. 232154
on December 22, 1972 at 9 A.M.
in the office of the Register of Deeds
of Pine County, Minnesota.
[Signature]
Register of Deeds



SCALE: 1" = 50'
● = IRON MONUMENT

RESTRICTIONS
All restrictions on the use of the land in the "1971 REARRANGEMENT OF LOTS 103 TO 110 INCLUSIVE OF STURGEON ISLAND" shall be the same as the restrictions on the "PLAT OF STURGEON ISLAND" as the same is recorded in the office of the Register of Deeds in and for the County of Pine, at Pine City, Minnesota, and by reference made a part hereof.

OFFICIAL PLAT
1971 REARRANGEMENT
of
LOTS 103 TO 110 INCLUSIVE
of
STURGEON ISLAND
PINE COUNTY, MINNESOTA