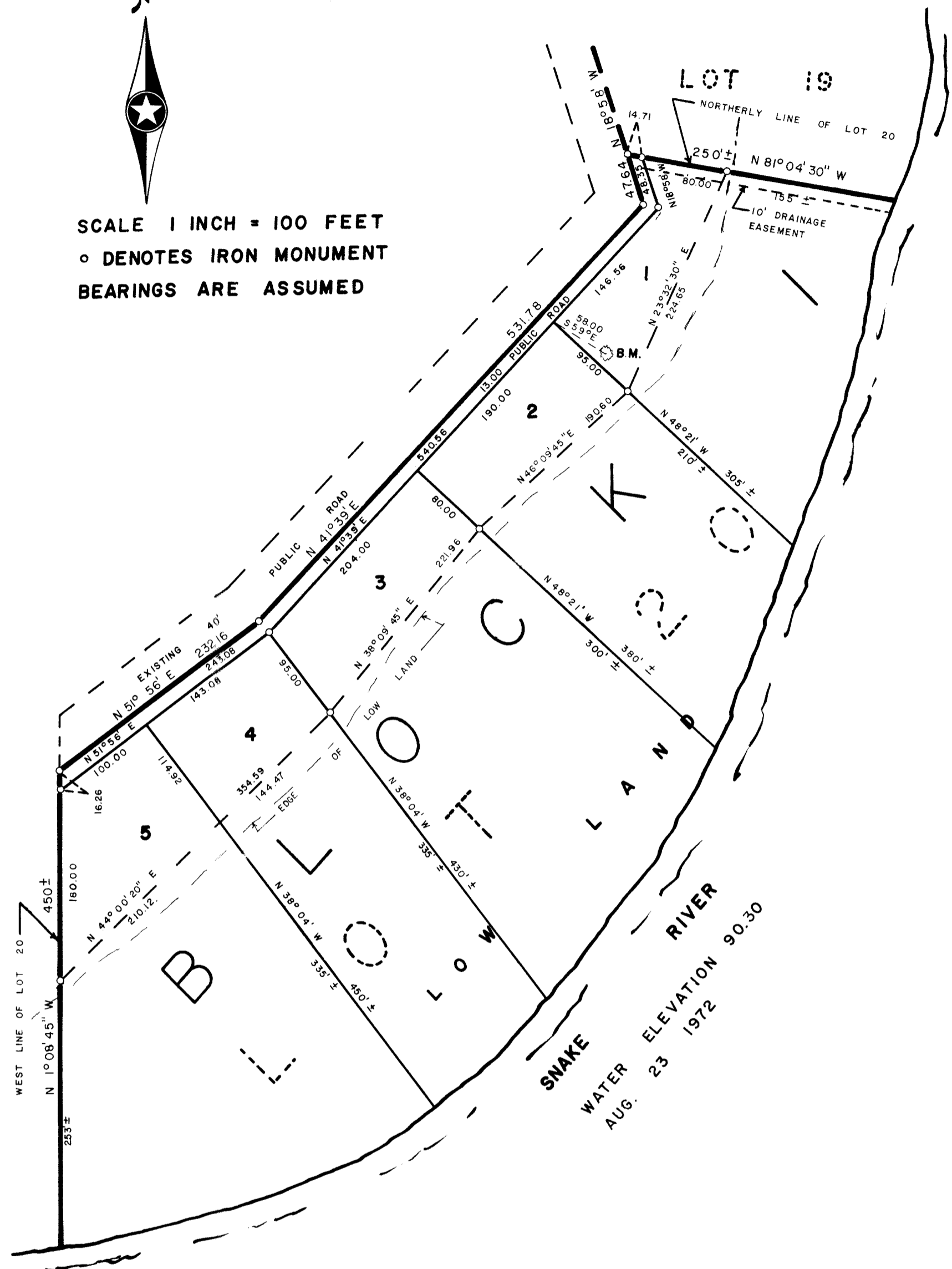


# BAKERS SUBDIVISION OF LOT 20 FRANDSEN'S COPPER CANYON



SCALE 1 INCH = 100 FEET  
 ○ DENOTES IRON MONUMENT  
 BEARINGS ARE ASSUMED



OFFICIAL PLAT

KNOW ALL MEN BY THESE PRESENTS: That Ralph D. Baker and Marjorie G. Baker, husband and wife, owners and proprietors, of the following described property situate in the County of Pine, State of Minnesota to wit:

Lot 20, Block 1 of FRANDSEN'S COPPER CANYON according to the recorded plat thereof.

Have caused the same to be surveyed and platted as BAKER'S SUBDIVISION OF FRANDSEN'S COPPER CANYON, and do hereby denote and dedicate to the public for public use forever, the road and the drainage and utility easement as shown on this plat.

In witness, whereof Ralph D. Baker and Marjorie G. Baker, husband and wife, have hereunto set their hands and affixed their seals this 22nd day of September A.D., 1972.

IN PRESENCE OF:

Witness Robert M. Baker Witness Lillian Jordan

Witness Robert M. Baker Witness Lillian Jordan

SIGNED

Ralph D. Baker  
Ralph D. Baker

Marjorie G. Baker  
Marjorie G. Baker

State of Minnesota  
 County of Minnesota

On this 22nd day of September A.D., 1972, before me, a Notary Public, within and for said County and State, personally appeared Ralph D. Baker and Marjorie G. Baker, husband and wife, to me personally known to be the persons described in and who executed the foregoing instrument and acknowledged that they executed the same as their own free act and deed.

Lillian Jordan  
 Notary Public, Minnesota County, Minnesota  
 My Commission Expires Oct. 13, 1972

I hereby certify that I have surveyed the property described on this plat as BAKER'S SUBDIVISION OF FRANDSEN'S COPPER CANYON; That this plat is a correct representation of said survey; That all distances are correctly shown in feet and decimals of a foot; That all monuments have been correctly placed in the ground as shown; That the outside boundary lines are correctly designated; That there are no wet lands or public highways to be designated on the plat other than as shown thereon.

Morrell B. Rude  
 Morrell B. Rude  
 Land Surveyor Minnesota Registration No. 8195

State of Minnesota  
 County of Pine

This Surveyors Certificate was subscribed and sworn to before me, a Notary Public, this 20th day of Sept A.D., 1972.

Geo. M. Rude  
 Notary Public, Pine County, Minnesota  
 My Commission Expires Oct. 7, 1972

The plat of BAKER'S SUBDIVISION OF FRANDSEN'S COPPER CANYON was accepted and approved by the Town Board of Chengwatana Township at a regular meeting thereof held this \_\_\_\_\_ day of \_\_\_\_\_ A.D., 19\_\_\_\_.

CHENGWATANA TOWNSHIP

By: \_\_\_\_\_ Chairman By: \_\_\_\_\_ Clerk

The plat of BAKER'S SUBDIVISION OF FRANDSEN'S COPPER CANYON was accepted and approved by the County Board of Pine County, Minnesota, at a regular meeting thereof held this 3rd day of October A.D., 1972.

COUNTY BOARD OF PINE COUNTY

By Harold J. Jedin Chairman By Harold J. Jedin Auditor

This plat was approved as to form and execution on this 3rd day of October A.D., 1972.

Harold J. Jedin  
 County Attorney, Pine County, Minnesota

I hereby certify that the taxes for the year 72 on the property described herein are paid.

Raymond J. Jedin  
 County Treasurer, Pine County, Minnesota

I hereby certify that the taxes for the year 1971 and all prior years on the property described herein are paid.

Harold J. Jedin  
 County Auditor, Pine County, Minnesota

I hereby certify that the plat of BAKER'S SUBDIVISION OF FRANDSEN'S COPPER CANYON was filed in this office on the 19 day of December A.D., 1972, at 4:00 clock P.M., Micro Number 232115.

Arvo Bible  
 Register of Deeds, Pine County, Minnesota

BENCH MARK IS SPIKE IN SOUTH FACE OF 12 INCH LOCATED ON LOT 1  
 ELEVATION 100.00 ASSUMED

HIGH WATER ELEVATION 97.30 JULY 27 1972