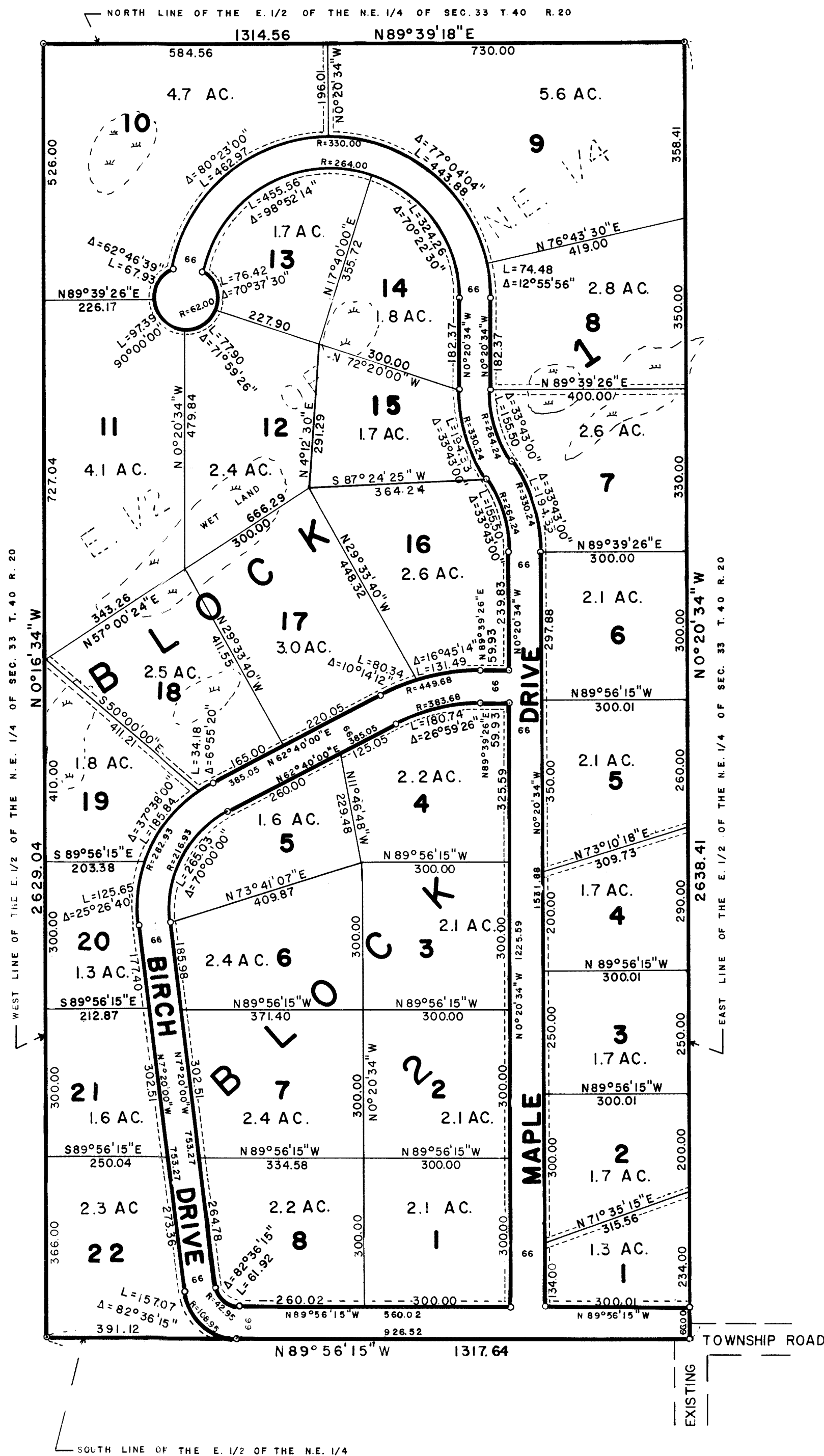


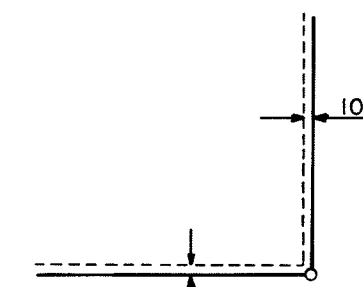
# BEROUN ACRES

OFFICIAL PLAT



SCALE 1 INCH = 200 FEET  
 ○ DENOTES IRON MONUMENT  
 BEARINGS ARE ASSUMED

DRAINAGE AND UTILITY EASEMENTS  
 SHOWN THUS:



BEING 10 FEET IN WIDTH AND ADJOINING  
 LOT LINES AS SHOWN

KNOW ALL MEN BY THESE PRESENTS: That Dennis Frandsen and Company, Inc., a Minnesota Corporation, owner and proprietor of the following described property situate in the County of Pine, State of Minnesota to wit:

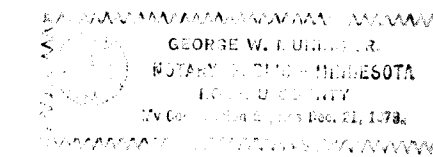
The East Half of the Northeast Quarter of Section 33, Township 40, Range 20, Pine County, Minnesota.

Have caused the same to be surveyed and platted as BEROUN ACRES, and do hereby donate and dedicate to the public for public use forever the roads and the drainage and utility easements as shown on this plat.

In witness whereof, Dennis Frandsen and Company, Inc., a Minnesota Corporation, has caused these presents to be signed by its proper officers and its corporate seal to be hereunto affixed this 21st day of JANUARY A.D., 1975.

Dennis Frandsen, Dennis Frandsen its President, and Mary Jo Vaughn, Mary Jo Vaughn its Secretary.

State of MINNESOTA County of CUSCO The foregoing instrument was acknowledged before me this 21st day of JANUARY A.D., 1975, by Dennis Frandsen, its President, and Mary Jo Vaughn, its Secretary, respectively, of Dennis Frandsen and Company, Inc., the corporation named in the foregoing instrument, that the seal affixed to said instrument is the corporate seal of said corporation, and said instrument was signed and sealed in behalf of said corporation by authority of its Board of Directors and said Dennis Frandsen and Mary Jo Vaughn acknowledged said instrument to be the free act and deed of said corporation.



Lucy W. Munk  
 Notary Public, ROSEAU County, Minnesota  
 My Commission Expires DEC 21, 1979

I hereby certify that I have surveyed the property described on this plat as BEROUN ACRES; That this plat is a correct representation of said survey; That all distances are correctly shown in feet and decimals of a foot; That all monuments have been correctly placed in the ground as shown; That the outside boundary lines are correctly designated; That there are no wet lands or public highways to be designated on the plat other than as shown thereon.

Morrell B. Rude  
 Morrell B. Rude  
 Land Surveyor Minnesota Registration No. 8195

State of Minnesota County of Pine The foregoing instrument was acknowledged before me this 20th day of JANUARY A.D., 1975, by Morrell B. Rude, Land Surveyor.

Rosemarie Rude  
 Notary Public, Pine County, Minnesota  
 My Commission Expires September 22, 1979

The plat of BEROUN ACRES was accepted and approved by the County Board of Pine County, Minnesota, at a regular meeting thereof held this 4th day of FEBRUARY A.D., 1975.

COUNTY BOARD OF PINE COUNTY  
 By: Edward Anderson Chairman By: Stewart Hellen Auditor

The plat was approved as to form and execution on this 5th day of FEBRUARY A.D., 1975.

Thomas Ryan  
 County Attorney, Pine County, Minnesota

I hereby certify that the taxes for all prior years on the property described herein are paid.

Stewart Hellen  
 County Auditor, Pine County, Minnesota

I hereby certify that the plat of BEROUN ACRES was filed in this office on the 6 day of FEBRUARY A.D., 1975, at 10 o'clock P.M., Micro Number 239896.

I hereby certify that the taxes on the property described herein for the year 1975 are paid.

Wis Bible  
 Register of Deeds, Pine County, Minnesota

Raymond J. Schmitt  
 County Treasurer  
 Pine County, Minnesota