

DARLING'S GRINDSTONE SUBDIVISION

COPY

KNOW ALL MEN BY THESE PRESENTS: That Ann A. Darling, a widow, owner and proprietor of the following described property situate in the County of Pine, State of Minnesota, to-wit:

That part of the West Half of the Southwest Quarter of Section 21, Township 41, Range 20, Pine County, Minnesota, which lies Easterly of the Grindstone River.

And

That part of the Southeast Quarter of the Southeast Quarter of Section 20, Township 41, Range 20, Pine County, Minnesota, which lies Easterly of the Grindstone River and Easterly of County Highway No. 140.

Has caused the same to be surveyed and platted as DARLING'S GRINDSTONE SUBDIVISION, and do hereby donate and dedicate to the public for public use forever, State Highway No. 48, County Highway No. 140, Darling Drive and the drainage and utility easements as shown on this plat.

In witness whereof, Ann A. Darling, a widow, has hereunto set her hand and affixed her seal this 11th day of December A.D., 19 76.

S I G N E D

Ann A. Darling
Ann A. Darling

State of Minnesota
County of Pine

The foregoing instrument was acknowledged before me this 11th day of December A.D., 19 76, by Ann A. Darling.

Rosemarie Rude
Notary Public, Pine County, Minnesota
My Commission Expires September 22, 1979

I hereby certify that I have surveyed the property described on this plat as DARLING'S GRINDSTONE SUBDIVISION; That this plat is a correct representation of said survey; That all distances are correctly shown in feet and decimals of a foot; That all monuments have been correctly placed in the ground as shown; That the outside boundary lines are correctly designated; That there are no wet lands or public highways to be designated on the plat other than as shown thereon.

Morrell B. Rude
Morrell B. Rude
Land Surveyor Minnesota Registration No. 8195

State of Minnesota
County of Pine

This Surveyor's Certificate was subscribed and sworn to before me, a Notary Public, this 11th day of December A.D., 19 76, by Morrell B. Rude, Land Surveyor.

Rosemarie Rude
Notary Public, Pine County, Minnesota
My Commission Expires September 22, 1979

This plat was approved as to form and execution on this 10th day of January A.D., 19 77.

Thomas Ryan
County Attorney, Pine County, Minnesota

I hereby certify that the taxes for the year 1977 on the property described herein are paid.

Harold A. Shult
County Treasurer, Pine County, Minnesota

I hereby certify that the taxes for the year 1976 and all prior years on the property described herein are paid.

Therese Hill
County Auditor, Pine County, Minnesota

The plat of DARLING'S GRINDSTONE SUBDIVISION was accepted and approved by the County Board of Pine County, Minnesota, at a regular meeting thereof, held this 2th day of December A.D., 19 76.

COUNTY BOARD OF PINE COUNTY

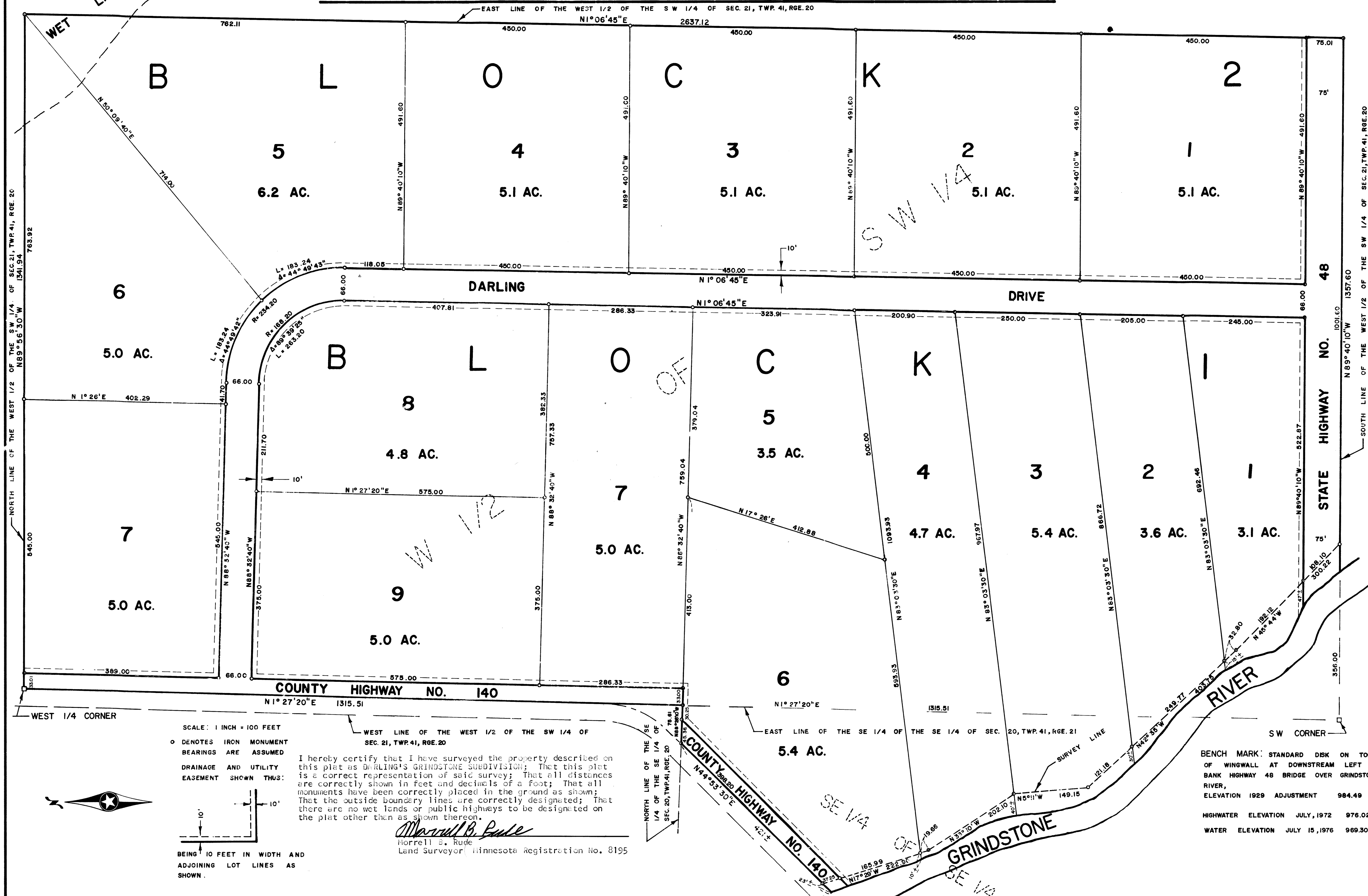
By: Darryl Robbins Chairman By: Therese Hill Auditor

I hereby certify that the plat of DARLING'S GRINDSTONE SUBDIVISION was filed in this office on the 17 day of January A.D., 19 77, at 9 o'clock A. M., Micro Number 247690.

Cois Biele
County Recorder, Pine County, Minnesota

DARLING'S GRINDSTONE SUBDIVISION

COPY



SCALE: 1 INCH = 100 FEET
 ○ DENOTES IRON MONUMENT
 BEARINGS ARE ASSUMED
 DRAINAGE AND UTILITY
 EASEMENT SHOWN THUS:

I hereby certify that I have surveyed the property described on this plat as DARLING'S GRINDSTONE SUBDIVISION; That this plat is a correct representation of said survey; That all distances are correctly shown in feet and decimals of a foot; That all monuments have been correctly placed in the ground as shown; That the outside boundary lines are correctly designated; That there are no wet lands or public highways to be designated on the plat other than as shown thereon.

Marshall B. Rude
 Marshall B. Rude
 Land Surveyor (Minnesota Registration No. 8195)

BENCH MARK: STANDARD DISK ON TOP OF WINGWALL AT DOWNSTREAM LEFT BANK HIGHWAY 48 BRIDGE OVER GRINDSTONE RIVER, ELEVATION 1929 ADJUSTMENT 984.49
 HIGHWATER ELEVATION JULY, 1972 976.02
 WATER ELEVATION JULY 15, 1976 969.30