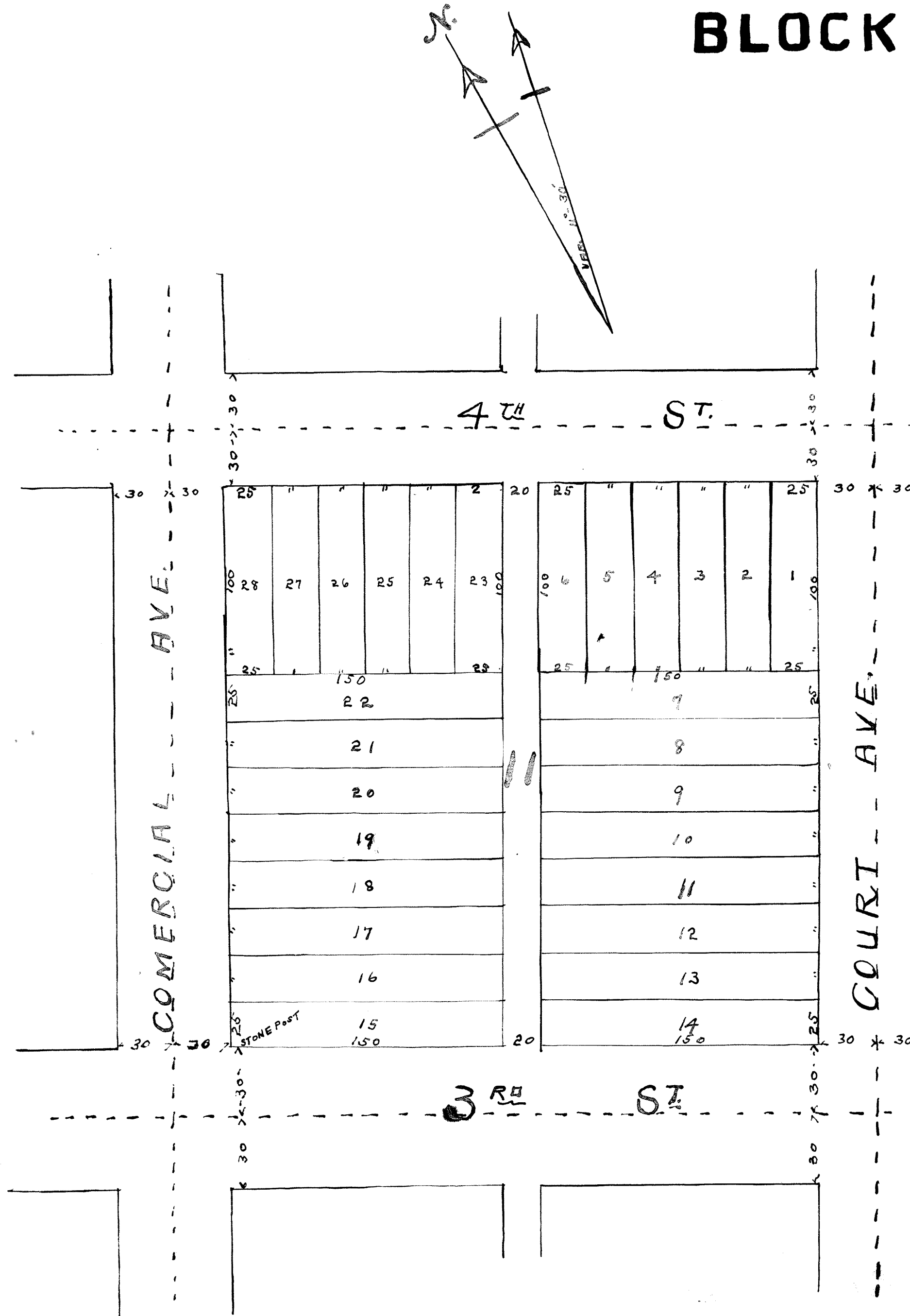


# DENNIE'S SUBDIVISION BLOCK II OF SANDSTONE QUARRIES PINE COUNTY MINNESOTA

SCALE 50 FEET TO 1 INCH

T. A. LANG SURVEYOR  
114 KASOTA BLOCK  
MINNEAPOLIS MINN.



Know all men by these presents that the Minneapolis Trust Company a Corporation duly created organized and now existing under and by virtue of the laws of the State of Minnesota, owner and proprietor of Block Eleven (11) in Town site of Sandstone Quarries, lying and being in the County of PINE and State of Minnesota according to the Recorded plat thereof on file and of Record in the office of Register of deeds within and for the County of PINE State of Minnesota. Have caused the same to be laid out surveyed and platted to be known as DENNIE'S SUBDIVISION of Block Eleven (11) SANDSTONE QUARRIES as shown on the annexed plat, and does hereby donate and dedicate to the public use forever all adjacent streets avenues and alleys as hereon shown in testimony whereof the said Minneapolis Trust Company has caused its Corporate Seal to be hereunto affixed and these presents to be subscribed in its behalf by Samuel Hill its President and Counter signed by Clarkson Lindley its Secretary all done on this

Sixth day of August A.D. 1895  
Signed Sealed and delivered  
in the presence of

Benny Hebb } Witnesses  
Orank Hennick }  
By Samuel Hill  
Its President

Attest Clarkson Lindley  
Its Secretary



State of Minnesota } S.S.  
County of Hennepin }  
on this 6<sup>th</sup> day of August A.D. 1895 before me personally appeared Samuel Hill and Clarkson Lindley to me personally known who being by me severally duly sworn did say that the said Samuel Hill is president and the said Clarkson Lindley is Secretary of the Minneapolis Trust Company a Corporation duly organized and existing under and by virtue of the Laws of the State of Minnesota, that the Seal affixed to the foregoing instrument is the Corporate seal of said Corporation, and by the authority of its Board of directors and said Samuel Hill and Clarkson Lindley severally acknowledged said instrument to be the free act and deed of said Corporation  
Witness my hand and official Seal the day and year above written

Benny Hebb  
Notary Public Hennepin County Minnesota



I, T. A. LANG a surveyor hereby certify that I have surveyed the land described in the foregoing instrument of dedication and divided the same into Blocks and Lots as shown on the above map and that the Blocks and Lots are numbered in progressive numbers and that the sizes of all Lots and width of all streets avenues and alleys are indicated on said map by figures denoting feet and decimals of feet and that said map accurately represents the survey and divisions above referred to and that I have set at the south West Corner of said Block Eleven (11) a stone Post from which future surveys may be made  
Witness my hand and Seal this 6<sup>th</sup> day of August A.D. 1895

Geo. Ruston } Witnesses  
S. E. Ruston } T. A. Lang (Seal)  
Surveyor.

State of Minnesota } S.S.  
County of Hennepin }  
Be it known that on this 6<sup>th</sup> day of August A.D. 1895 Personally came before me T. A. Lang to me known to be the person who executed the above certificate of survey and acknowledged he executed the same as his free act and deed  
Witness my hand and official seal the day and year above written  
Geo. Ruston  
Notary Public Hennepin County Minnesota



No. 20358.  
Office of Register of Deeds  
PINE COUNTY, MINNESOTA  
I hereby certify that the plat of DENNIE'S subdivision of Block Eleven (11) Sandstone Quarries was filed in this office for record on the 20<sup>th</sup> day of August A.D. 1895 at 2 o'clock P. M. and duly recorded in Book of Plats on page No. 20358.



James H. Stewart  
Register of Deeds

State of Minnesota } S.S.  
County of Pine }  
I Oscar Oswald County Surveyor in and for the County of Pine Minnesota do hereby certify that the monuments for the guidance of future surveys as shown on the annexed plat have been correctly placed and that sizes of all lots are as given on the plat  
Oscar Oswald  
County Surveyor  
Pine County, Minnesota