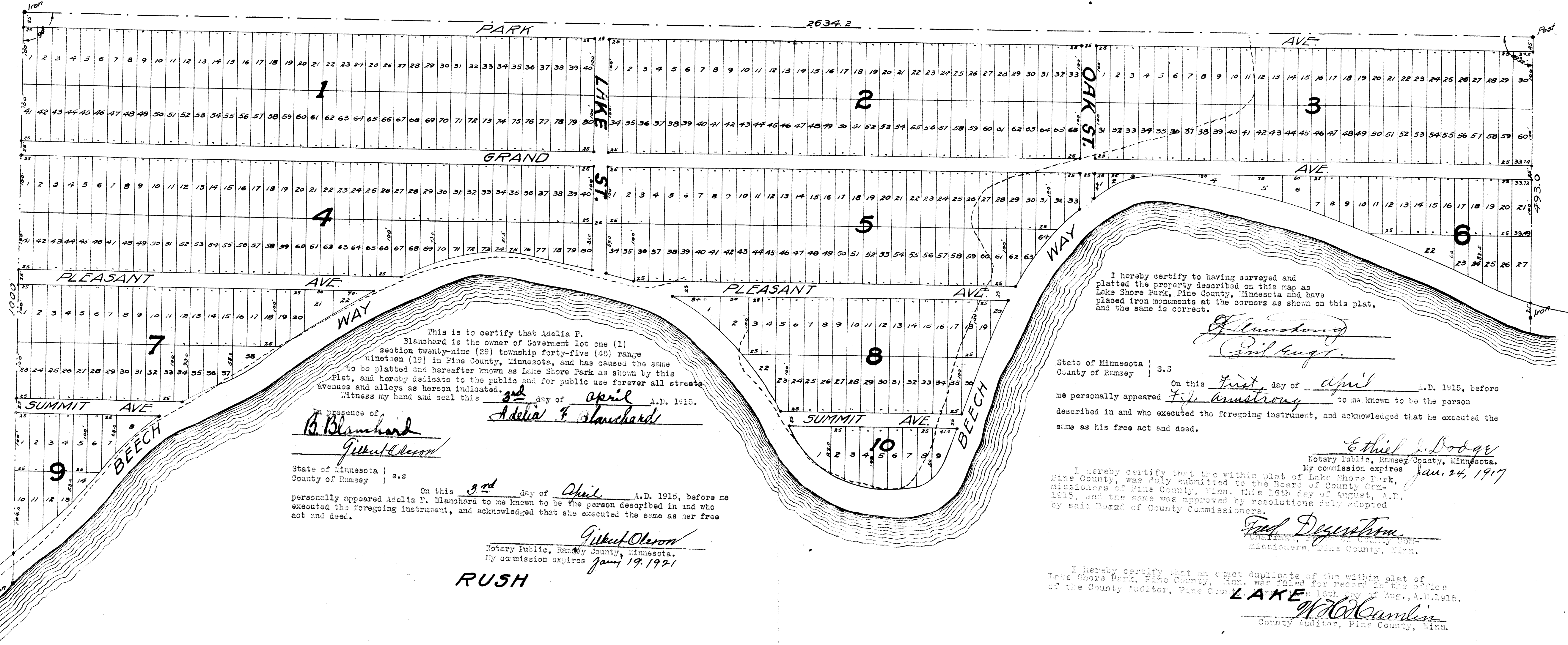


LAKE SHORE PARK

PINE COUNTY MINN.

SCALE 100 FT. TO 1 INCH

--- Indicates toe of slope.
• Indicates Iron 77/100 ft.



This is to certify that Adelia F. Blanchard is the owner of Government lot one (1) section twenty-nine (29) township forty-five (45) range nineteen (19) in Pine County, Minnesota, and has caused the same to be platted and hereafter known as Lake Shore Park as shown by this Plat, and hereby dedicates to the public and for public use forever all streets, avenues and alleys as hereon indicated.

Witness my hand and seal this 3rd day of April A.D. 1915.

In presence of
B. Blanchard
Gilbert Oleson

State of Minnesota)
 County of Ramsey) S.S.
 Personally appeared Adelia F. Blanchard to me known to be the person described in and who executed the foregoing instrument, and acknowledged that she executed the same as her free act and deed.

Gilbert Oleson
 Notary Public, Ramsey County, Minnesota.
 My commission expires Jan. 19, 1921

RUSH

I hereby certify to having surveyed and platted the property described on this map as Lake Shore Park, Pine County, Minnesota and have placed iron monuments at the corners as shown on this plat, and the same is correct.

J. Armstrong
Carl Kugler

State of Minnesota)
 County of Ramsey) S.S.
 On this first day of April A.D. 1915, before me personally appeared J. Armstrong to me known to be the person described in and who executed the foregoing instrument, and acknowledged that he executed the same as his free act and deed.

Ethel J. Dodge
 Notary Public, Ramsey County, Minnesota.
 My commission expires Jan. 24, 1917

I hereby certify that the within plat of Lake Shore Park, Pine County, Minn. was duly submitted to the Board of County Commissioners of Pine County, Minn. this 16th day of August, A.D. 1915, and the same was approved by resolutions duly adopted by said Board of County Commissioners.

Fred Degerstrom
 Chairman, Board of County Commissioners, Pine County, Minn.

I hereby certify that an exact duplicate of the within plat of Lake Shore Park, Pine County, Minn. was filed for record in the office of the County Auditor, Pine County, Minnesota, this 16th day of Aug., A.D. 1915.

W. H. Camlin
 County Auditor, Pine County, Minn.

LAKE