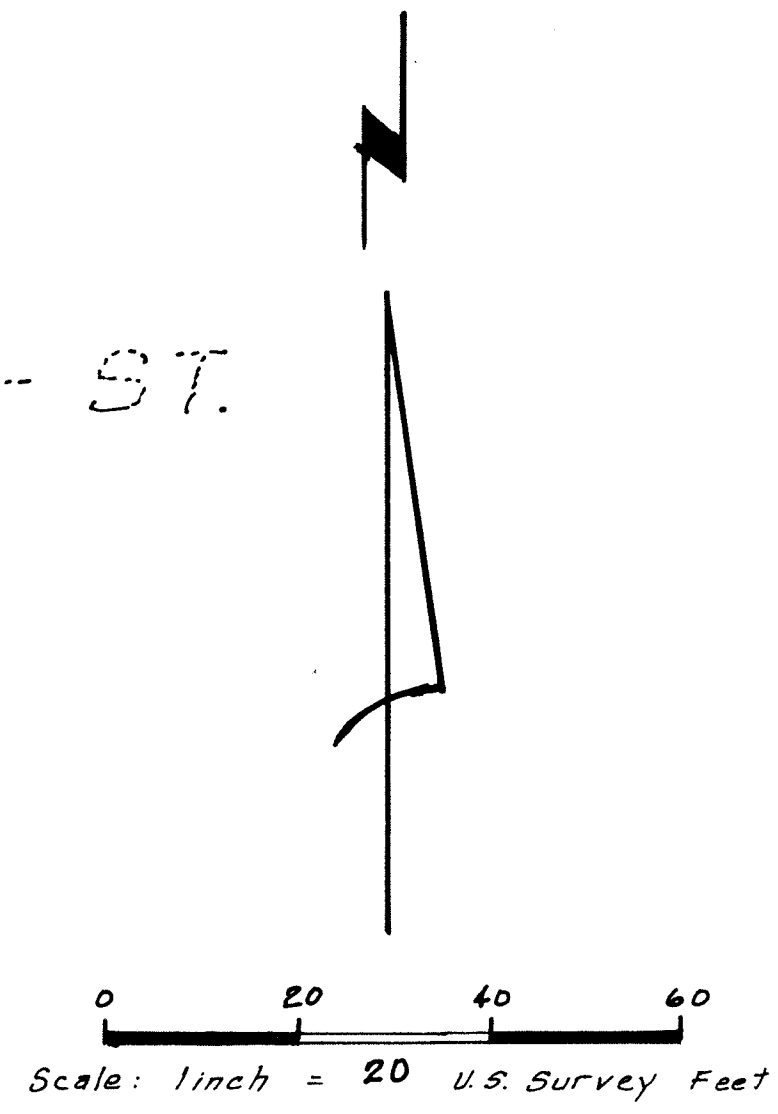
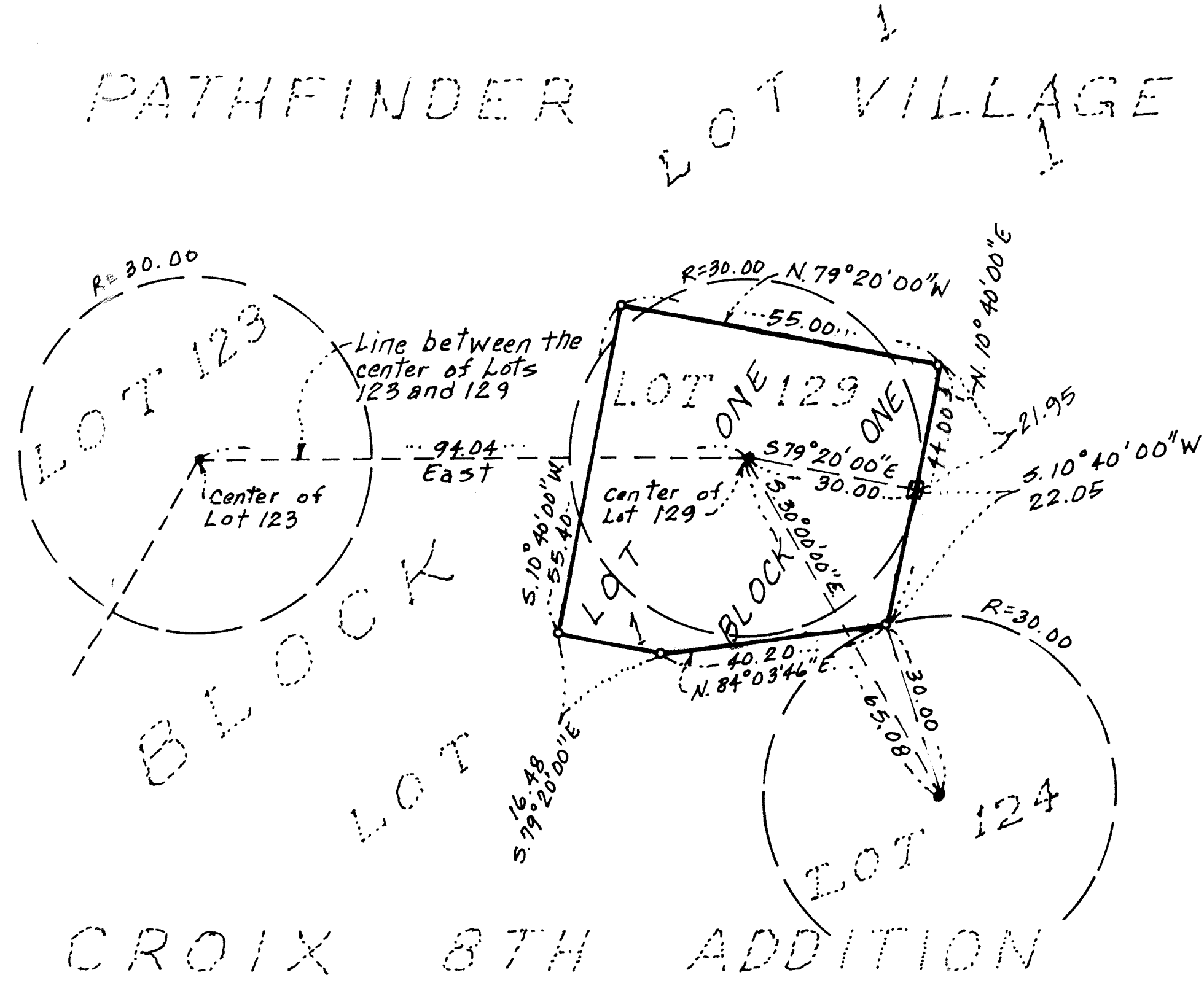


# PATHFINDER VILLAGE - ST. CROIX 8TH ADDITION REPLAT ONE



- Denotes a 1/2 inch by 1 1/4 inch found iron monument having a plastic cap bearing Land Surveyor License No. 8195.
  - Denotes a 1/2 inch by 1 1/4 inch set iron monument having a plastic cap bearing Land Surveyor License No. 17006.
  - Denotes a computed position for a point on the east line of Lot 1, Block 1, but no monument has been set.
- Bearings shown hereon are based on the assumption that the line between the center of Lots 123 and 129, Block 1, PATHFINDER VILLAGE - ST. CROIX 8TH ADDITION has a bearing of East.

KNOW ALL PERSONS BY THESE PRESENTS: That Pathfinder Village - St. Croix Owners Association, Inc., a Minnesota non-profit corporation, owner and proprietor of the following described property situated in Section 29, Township 41 North, Range 18 West of the Fourth Principal Meridian in the County of Pine, State of Minnesota, to wit:

That part of Lots 1 and 129, Block 1, PATHFINDER VILLAGE - ST. CROIX 8TH ADDITION, according to the recorded plat thereof, Pine County, Minnesota described as follows:

Commencing at the center of said Lot 129; thence South 79 degrees 20 minutes 00 seconds East (assuming the line between the center of Lots 123 and 129 in said Block 1 has a bearing of East), a distance of 30.00 feet; thence South 10 degrees 40 minutes 00 seconds West a distance of 22.05 feet, to a point on the boundary of Lot 124 in said Block 1 and the point of beginning of the land to be described; thence North 10 degrees 40 minutes 00 seconds East a distance of 44.00 feet; thence North 79 degrees 20 minutes 00 seconds West a distance of 55.00 feet; thence South 10 degrees 40 minutes 00 seconds West a distance of 55.40 feet; thence South 19 degrees 20 minutes 00 seconds East a distance of 16.48 feet; thence North 84 degrees 03 minutes 46 seconds East a distance of 40.20 feet, to the point of beginning.

Have caused the same to be surveyed and platted as PATHFINDER VILLAGE - ST. CROIX 8TH ADDITION REPLAT ONE.

In witness whereof said Pathfinder Village - St. Croix Owners Association, Inc., a Minnesota non-profit corporation, has caused the same to be signed by its proper officer this 13th day of September, 2006.

Pathfinder Village - St. Croix Owners Association, Inc.  
by Theodore D. Kemna its President  
Theodore D. Kemna

STATE OF MINNESOTA  
COUNTY OF PINE

The foregoing instrument was acknowledged before me this 13th day of September, 2006 by Theodore D. Kemna, President of Pathfinder Village - St. Croix Owners Association, Inc., a Minnesota non-profit corporation, on behalf of said corporation.

Jodell K. Anderson  
Jodell K. Anderson  
Notary Public, Pine County, Minnesota  
My Commission Expires on January 31, 2010

JODELL K. ANDERSON  
Notary Public  
Minnesota  
My Commission Expires Jan. 31, 2010

I hereby certify that I have surveyed and platted the property described on this plat as PATHFINDER VILLAGE - ST. CROIX 8TH ADDITION REPLAT ONE; that this plat is a correct representation of the survey; that all distances are correctly shown on the plat in feet and hundredth of a foot; that all monuments are correctly designated on the plat; that the outside boundary lines are correctly designated on the plat and there are no wetlands or public highways to be designated.

Theodore D. Kemna  
Theodore D. Kemna, Land Surveyor  
Minnesota License Number 17006

STATE OF MINNESOTA  
COUNTY OF PINE

The foregoing Surveyor's Certificate was acknowledged before me this 13th day of September, 2006 by Theodore D. Kemna, Minnesota License No. 17006.

Jodell K. Anderson  
Jodell K. Anderson  
Notary Public, Pine County, Minnesota

JODELL K. ANDERSON  
Notary Public  
Minnesota  
My Commission Expires Jan. 31, 2010

TOWNSHIP OF CLOVER, PINE COUNTY, MINNESOTA  
Approved by the Board of Supervisors of the Township of Clover, Pine County, Minnesota, this 17th day of November, 2006 and is in compliance with the provisions of Chapter 605.03, Subdivision 2, Minnesota Statutes.

David H. Nelson Board Chairperson  
David C. Nelson Clerk

PINE COUNTY BOARD OF COMMISSIONERS  
Approved by the Board of Commissioners, Pine County, Minnesota, this 17th day of November, 2006 and is in compliance with the provisions of Chapter 605.03, Subdivision 2, Minnesota Statutes.

Gregory B. St. Board Chairperson  
John St. Clerk

PINE COUNTY ATTORNEY  
This plat was approved as to form and execution this 17th day of October, 2006.

John K. Cul  
County Attorney

PINE COUNTY SURVEYOR  
Approved by the Pine County Surveyor, Pine County, Minnesota this 17th day of October, 2006 and is in compliance with the provisions of Chapter 505 and 506.12, Minnesota Statutes.

W. T. Hoff  
County Surveyor

PINE COUNTY AUDITOR  
No delinquent taxes and transfer entered this 28th day of December, 2006.

Cathy Johnson  
County Auditor

PINE COUNTY TREASURER  
I hereby certify the taxes for the year 2006 on the property described herein are paid this 28th day of December, 2006.

Shirley Mertzfeld  
County Treasurer

PINE COUNTY RECORDER  
Document No. 4101044

I hereby certify that this instrument was filed in the office of the County Recorder for record on this 28th day of December, 2006 and was duly recorded in the Pine County Records.

Jamara Tricas  
County Recorder