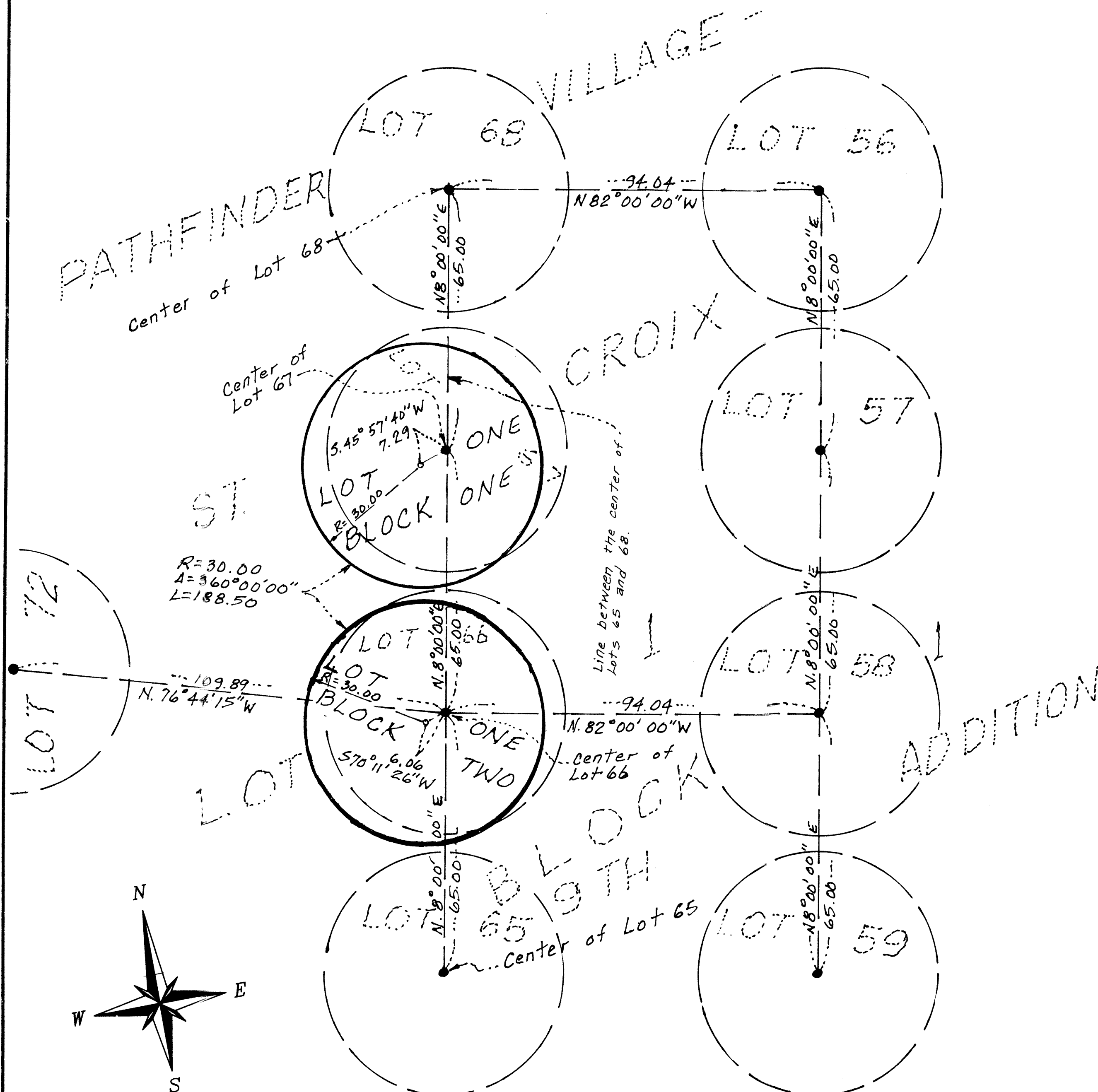


PATHFINDER VILLAGE - ST. CROIX 9TH. ADDITION REPLAT ONE



• Denotes a 1/2 inch by 14 inch found iron monument having a plastic cap bearing Land Surveyor License No. 8195.
 ○ Denotes a 1/2 inch by 14 inch set iron monument having a plastic cap bearing Land Surveyor License No. 17006.
 Bearings shown herein are based on the assumption that the line between the center of Lots 65 and 68, Block 1, PATHFINDER VILLAGE - ST. CROIX 9TH. ADDITION has a bearing of N. 8° 00' 00" E.

KNOW ALL PERSONS BY THESE PRESENTS: That Pathfinder Village - St. Croix Owners Association, Inc., a Minnesota non-profit corporation, owner and proprietor of the following described property situated in Section 29, Township 41 North, Range 18 West of the Fourth Principal Meridian in the County of Pine, State of Minnesota, to wit:

Those parts of Lots 1 and 66, Block 1, PATHFINDER VILLAGE - ST. CROIX 9TH. ADDITION, according to the recorded plat thereof, Pine County, Minnesota which lie within the circumference of a circle having a radius of 30.00 feet. The center of said circle is described as follows:

Beginning at the center of said Lot 66; thence South 70 degrees 11 minutes 26 seconds West (assuming the line between the center of Lots 65 and 68 in said Block 1 has an assumed bearing of North 8 degrees 00 minutes 00 seconds East) a distance of 6.96 feet, to the center of said circle and there terminating.

And those parts of Lots 1 and 67, Block 1, PATHFINDER VILLAGE - ST. CROIX 9TH. ADDITION, according to the recorded plat thereof, Pine County, Minnesota which lie within the circumference of a circle having a radius of 30.00 feet. The center of said circle is described as follows:

Beginning at the center of said Lot 67; thence South 45 degrees 57 minutes 40 seconds West (assuming the line between the center of Lots 65 and 68 in said Block 1 has an assumed bearing of North 8 degrees 00 minutes 00 seconds East) a distance of 7.29 feet, to the center of said circle and there terminating.

Has caused the same to be surveyed and platted as PATHFINDER VILLAGE - ST. CROIX 9TH. ADDITION REPLAT ONE.

In witness whereof said Pathfinder Village - St. Croix Owners Association, Inc., a Minnesota non-profit corporation, has caused the same to be signed by its proper officer this 13th day of September, 2006.

Pathfinder Village - St. Croix Owners Association, Inc.
 by Theodore D. Kenna Its President
 Theodore D. Kenna

STATE OF MINNESOTA
 COUNTY OF PINE

The foregoing instrument was acknowledged before me this 13th day of September, 2006 by Theodore D. Kenna, President of Pathfinder Village - St. Croix Owners Association, Inc. on behalf of said corporation.

Jodell K. Anderson
 Notary Public, Pine County, Minnesota
 My Commission Expires on January 31, 2010

I hereby certify that I have surveyed and platted the property described on this plat as PATHFINDER VILLAGE - ST. CROIX 9TH. ADDITION REPLAT ONE; that this plat is a correct representation of the survey; that all distances are correctly shown on the plat in feet and hundredth of a foot; that all monuments are correctly designated on the plat; that the outside boundary lines are correctly designated on the plat and there are no wetlands as defined in Minnesota Statutes, Section 505.02, Subd. 1 or public highways to be designated.

Theodore D. Kenna
 Theodore D. Kenna, Land Surveyor
 Minnesota License Number 17006

STATE OF MINNESOTA
 COUNTY OF PINE

The foregoing Surveyor's Certificate was acknowledged before me this 13th day of September, 2006 by Theodore D. Kenna, Minnesota License No. 17006.

Jodell K. Anderson
 Notary Public, Pine County, Minnesota
 My Commission Expires Jan. 31, 2010

TOWNSHIP OF CLOVER, PINE COUNTY, MINNESOTA
 Approved by the Board of Supervisors of the Township of Clover, Pine County, Minnesota, this 13th day of September, 2006 and is in compliance with the provisions of Chapter 505.02, Subdivision 2, Minnesota Statutes.

David Rappaport Board Chairman
David C. Madson Clerk

PINE COUNTY BOARD OF COMMISSIONERS
 Approved by the Board of Commissioners, Pine County, Minnesota, this 17 day of October, 2006 and is in compliance with the provisions of Chapter 505.03, Subdivision 2, Minnesota Statutes.

Roger B. ... Board Chairman
J. ... Clerk

PINE COUNTY ATTORNEY
 This plat was approved as to form and execution this 17 day of October, 2006.

J. ... County Attorney

PINE COUNTY SURVEYOR
 Approved by the Pine County Surveyor, Pine County, Minnesota this 17th day of October, 2006 and is in compliance with the provisions of Chapter 505 and 381.12, Minnesota Statutes.

R. T. ... County Surveyor

PINE COUNTY AUDITOR
 No delinquent taxes and transfer entered this 28 day of December, 2006.

Colleen Johnson Deputy
 County Auditor

PINE COUNTY TREASURER
 I hereby certify the taxes for the year 2006 on the property described herein are paid this 28 day of December, 2006.

Shirley Martfeld Deputy
 County Treasurer

PINE COUNTY RECORDER
 Document No. 4161045
 I hereby certify that this instrument was filed in the office of the County Recorder for record on this 28 day of December, 2006 and was duly recorded in the Pine County Records.

Jamara ...
 County Recorder

SCHOELL & MADSON, INC.
 ENGINEERS • SURVEYORS • PLANNERS