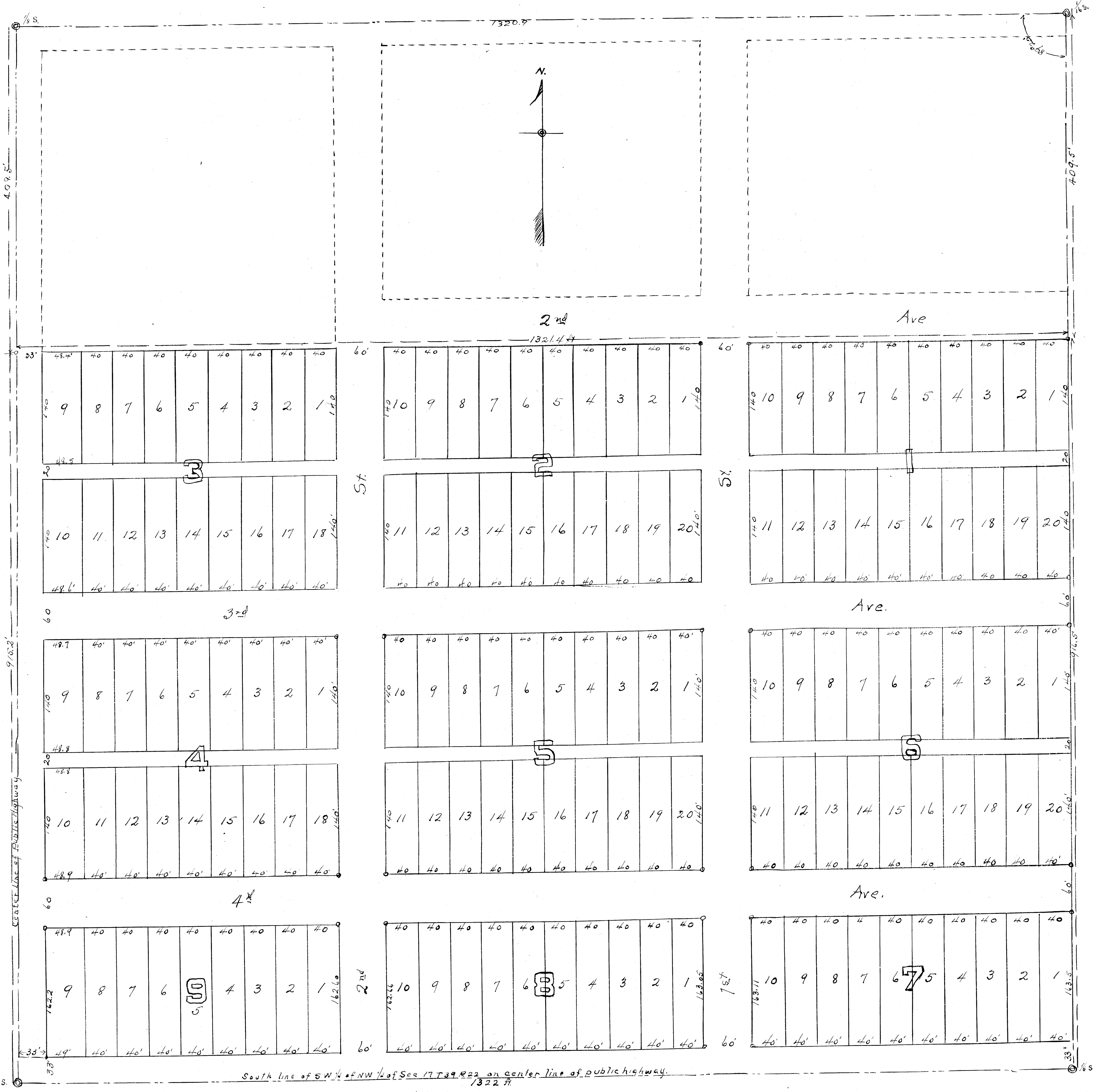


# PETERSON'S ADDITION TO CORNELL.

Scale 60 ft = 1 in.



State of Minnesota } ss. I hereby certify that I have surveyed and plotted the property described on this plat  
 County of Pine } as "PETERSON'S ADDITION TO CORNELL" that this plat is a correct represent-  
 ation of said survey, that all measurements and distances are correctly shown on the plat in feet and  
 decimals of feet, that the monuments for guidance of future surveys have been carefully placed in the  
 ground as shown on the plat, (gas pipe at all corners marked o) that the outside boundary lines are  
 correctly designated on the plat, that the topography of the land is correctly shown on the plat,  
 and that there are no wet lands or public lands or public highways to be designated on said plat  
 other than as shown thereon. James Buckley, Surveyor

The above certificate subscribed and sworn to before me on this 11th day of January 1916.  
 J. D. Boyls Notary Public (Notarial Seal)  
 NOTARY PUBLIC, Pine Co., Minn.  
 My commission expires July 17 1922

I do hereby certify that the above plat of "PETERSON'S ADDITION TO CORNELL" was duly  
 submitted to the Board of County Commissioners of Pine County, Minnesota this 21st day of  
 February 1916, and that the same was approved by resolution duly adopted by said board.  
 Fred Degardson Chairman of County Board.

We, Carolyn Peterson and Charles A. Peterson her husband, owners of the property described on this plat do  
 hereby certify to having caused the same to be plotted as "PETERSON'S ADDITION TO CORNELL" and that  
 we do hereby give and dedicate to the public and for the public use forever, all roads, streets  
 and alleys laid out and designated on this plat.  
 All lots in blocks Nos 1 to 9 inclusive are private property to be held or disposed of by the owners.  
 Witness our hand and seal this 12 day of January 1916.

In presence of } Carolyn Peterson  
 Geo. J. Matson } Charles A. Peterson  
 S. R. Melius }

State of Minnesota } ss. On this 12 day of January 1916, personally came before me  
 County of Pine } Carolyn Peterson and Charles A. Peterson her husband, to me known to be  
 the persons described in and who executed the foregoing certificate, and acknowledged that  
 they executed the same as their free act and deed.  
 Ida Peterson Notary Public, Pine County, Minn.

No 87014  
 Office of Register of Deeds  
 County of Pine, Minn.

I hereby certify that the within instrument  
 was filed in this office for record on the  
 14th day of April A.D. 1916

at 9 o'clock A.M. and was duly  
 recorded in Book of Plats.

Page 213  
 James H. Handzel  
 Register of Deeds.

Notarial  
 Seal.

My commission expires, May 4-1919

I hereby certify that taxes for the year  
 1915 on lands described within are paid.  
 Frank Ober  
 County Treasurer.

48  
 H. H. Hamlin  
 County Auditor.