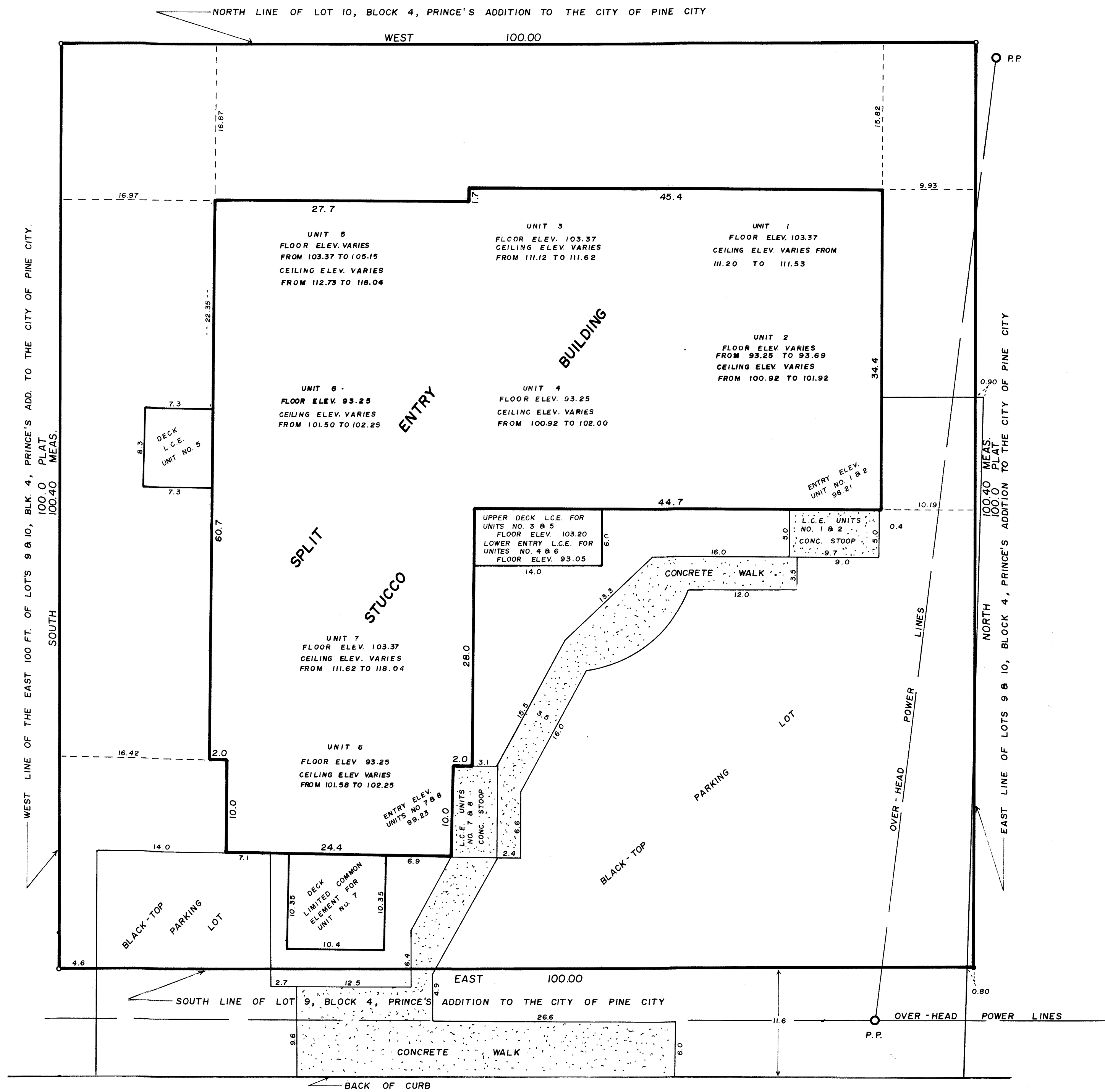


CONDOMINIUM NUMBER 1

# PINE PLACE CONDOMINIUM

SITE PLAN



The undersigned, being first duly sworn under oath, certifies and deposes that this Site Plan of Condominium No. 1, PINE PLACE CONDOMINIUM, being located upon the east 100.0 feet of Lots 9 and 10, Block 4, PRINCE'S ADDITION TO PINE CITY, recorded in the office of the Pine County Recorder, fully and accurately depict all information required by Minnesota Statutes Section 515A.2-110.

Dated this 5<sup>TH</sup> day of SEPT, 1984

M. B. Rude  
 M. B. Rude  
 Land Surveyor  
 Minnesota Registration No. 8195

State of Minnesota )  
 County of Pine ) ss.

The foregoing instrument was acknowledged before me this 5<sup>th</sup> day of September, 19 84, by M. B. Rude, a registered professional surveyor.

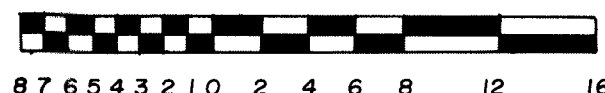
Rosemarie Rude  
 Notary Public  
 Pine County, Minnesota  
 My Commission Expires September 22, 1986

This Site Plan is part of Declaration Document No. 284028 filed on the 11 day of September, A.D., 19 84.

Francis Southwick  
 Pine County Recorder

### SCALE

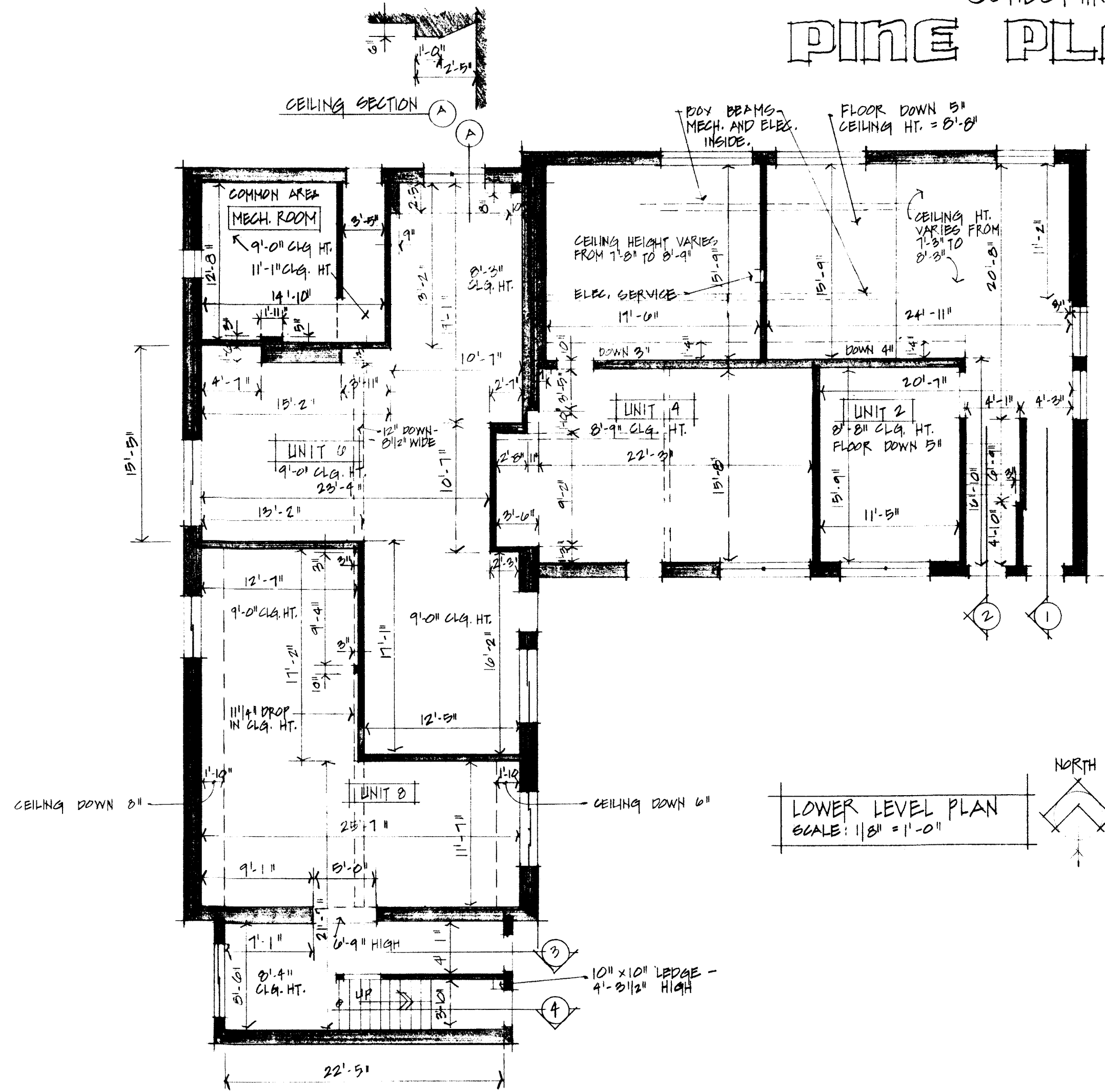
1 INCH = 8 FEET



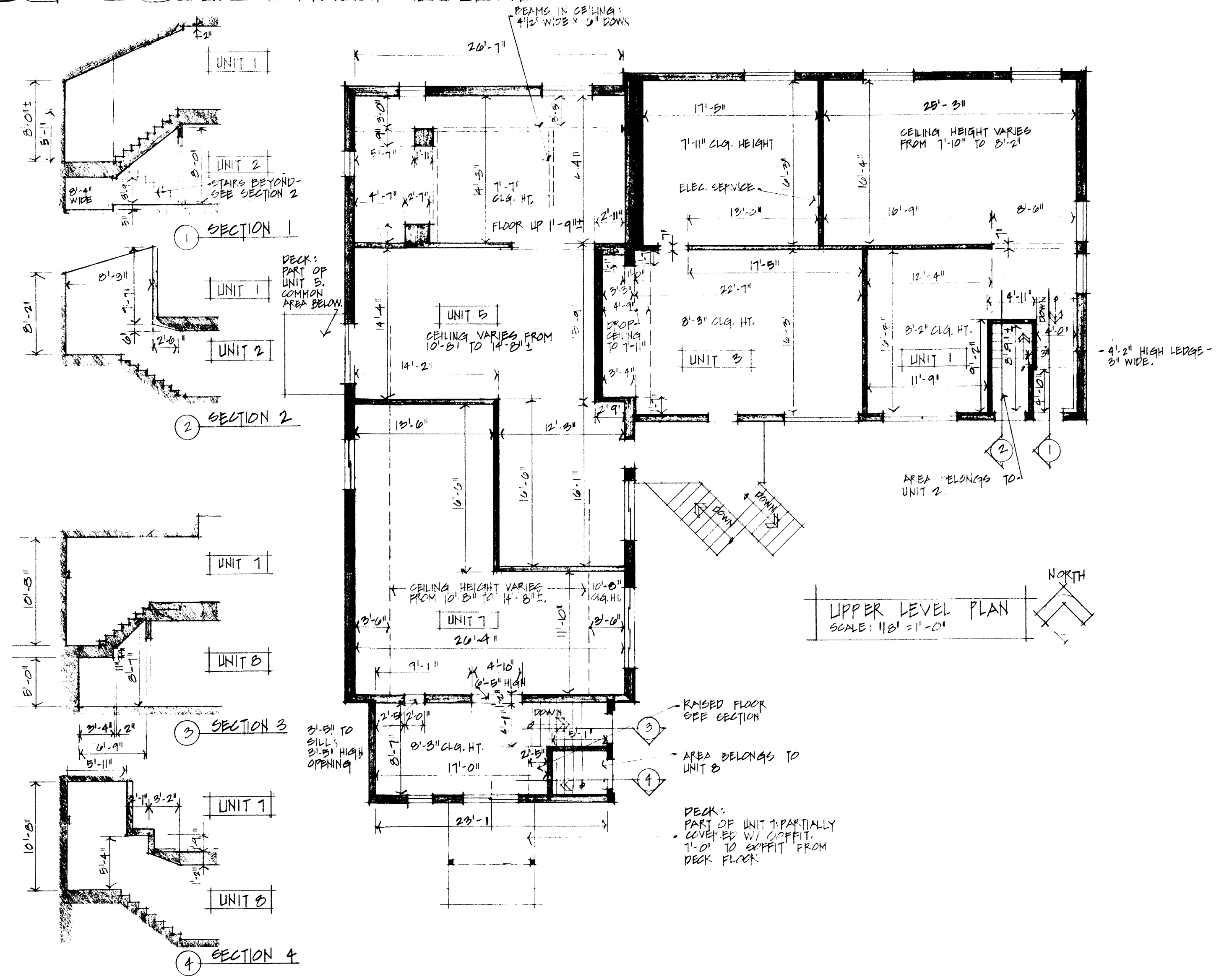
- DENOTES 1/2 INCH IRON PIPE WITH PLASTIC CAP MARKED R.L.S. NO. 8195
- DENOTES FOUND IRON PIN
- L.C.E. DENOTES LIMITED COMMON ELEMENT

THE SOUTH LINE OF LOT 9, BLOCK 4 IS ASSUMED TO HAVE A BEARING OF EAST.  
 BENCH MARK IS TOP NUT OF FIRE HYDRANT AT THE N.E. QUADRANT OF 6 TH. AVE. AND 10 TH. ST.  
 ASSUMED ELEV. = 100.00  
 ( 10 - 05 - 82 )

# CONDOMINIUM NUMBER 1 PINE PLACE CONDOMINIUM



LOWER LEVEL PLAN  
SCALE: 1/8" = 1'-0"



UPPER LEVEL PLAN  
SCALE: 1/8" = 1'-0"

**CERTIFICATE**  
 BRUCE W. SCHMITT, A REGISTERED PROFESSIONAL ARCHITECT FOR THE STATE OF MINNESOTA, HEREBY CERTIFIES THAT THE FLOOR PLANS ACCURATELY DEPICT ALL INFORMATION REQUIRED BY MINNESOTA STAT. SECTION 51A.2-110.  
 DATE THIS 15 DAY OF AUGUST, 1984  
 Bruce W. Schmitt  
 BRUCE W. SCHMITT, ARCHITECT  
 MINN. REG. NO. 14549

**CERTIFICATE**  
 I, BRUCE W. SCHMITT, A REGISTERED PROFESSIONAL ARCHITECT FOR THE STATE OF MINNESOTA DO HEREBY CERTIFY TO THE FOLLOWING: PURSUANT TO MINNESOTA STATUTES 51A.2-101 (B) ALL STRUCTURAL COMPONENTS AND MECHANICAL SYSTEMS SERVING MORE THAN ONE UNIT OF ALL BUILDINGS CONTAINING OR COMPRISING ANY UNITS HEREBY CREATED ARE SUBSTANTIALLY COMPLETED CONSISTENT WITH FLOOR PLANS FOR CONDOMINIUM NO. 1, PINE PLACE CONDOMINIUM; AND PURSUANT TO 51A.2-101 (C), ALL UNITS IN THE CONDOMINIUM, AS EVIDENCED BY THE FLOOR PLAN HEREOF, ARE SUBSTANTIALLY COMPLETED CONSISTENT WITH THE FLOOR PLANS FOR CONDOMINIUM NO. 1, PINE PLACE CONDOMINIUM.  
 DATE THIS 15 DAY OF AUGUST, 1984  
 Bruce W. Schmitt  
 BRUCE W. SCHMITT, ARCHITECT  
 MINN. REG. NO. 14549

**NOTARY**  
 STATE OF MINNESOTA  
 COUNTY OF \_\_\_\_\_  
 THE FOREGOING INSTRUMENT WAS ACKNOWLEDGED BEFORE ME THIS 15 DAY OF AUGUST, 1984 BY BRUCE W. SCHMITT, A REGISTERED PROFESSIONAL ARCHITECT.  
 Stephen Hendrickson  
 Notary Public  
 NOTARY PUBLIC

UNIT SQUARE FOOTAGES (APPROX.)	
UPPER LEVEL:	
UNIT 1	800 SQ. FT.
UNIT 3	771 SQ. FT.
UNIT 5	1099 SQ. FT.
UNIT 7	824 SQ. FT.
LOWER LEVEL:	
UNIT 2	841 SQ. FT.
UNIT 4	761 SQ. FT.
UNIT 6	843 SQ. FT.
UNIT 8	861 SQ. FT.
MECH.	231 SQ. FT.

**COUNTY RECORDER**  
 THESE FLOOR PLANS HAVE BEEN RECORDED AS PART OF THE DECLARATION FILED AS DOCUMENT NO. 284028  
 ON THE 11 DAY OF September, A.D. 1984,  
 COUNTY RECORDER.