

Pine County Land Department ♦ 2018 Tax Forfeit Land Auction



TRACT #21 KETTLE RIVER TOWNSHIP

PID - 17.0344.000

All that part in Lot G lying and being north of road and bridge in Auditor's Subdivision

27-44-20 5.0 acres

Appraised Value: \$34,900



Property Description:

2707 Central Ave

Approximately 5 acres with Kettle River frontage.

Property needs cleanup.

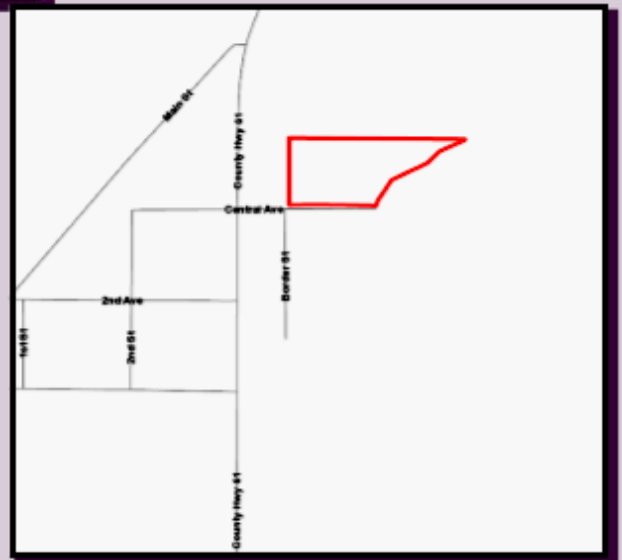
SOLED



www.co.pine.mn.us

Driving Directions

From the intersection of County Road 61 and County Road 39 (Rutledge Rd) in Rutledge, drive north on County Road 61 for about 950 feet. Turn east onto Central Avenue. Drive east on Central Avenue about 250 feet. Property is to the north.



Kettle River Township: 218-372-8855

Pine County Zoning: 320-216-4220

Maps are for informational purposes only and may not be exact. All properties sold "as is" with no guarantees. Buyers are encouraged to thoroughly research properties before purchase. If improvements are intended check with local planning and zoning authorities, and if wetlands exist contact Pine County Zoning. Acreage descriptions are approximate estimates. Please Note: Pine County makes no representations, warranties, nor guarantees with respect to access to tax forfeited lands sold. Subject to all existing easements of record and rights of way.

For further information please contact the Pine County Land Department at 320-216-4225.