

Pine County Land Department ♦ 2018 Tax Forfeit Land Auction



TRACT #30 SANDSTONE TOWNSHIP
PID - 30.0207.000 split
NW ¼ of SE ¼
22-42-19 40 acres

Appraised Value: \$30,900



Property Description:

40 acres, with previously logged upland forest and wetlands.

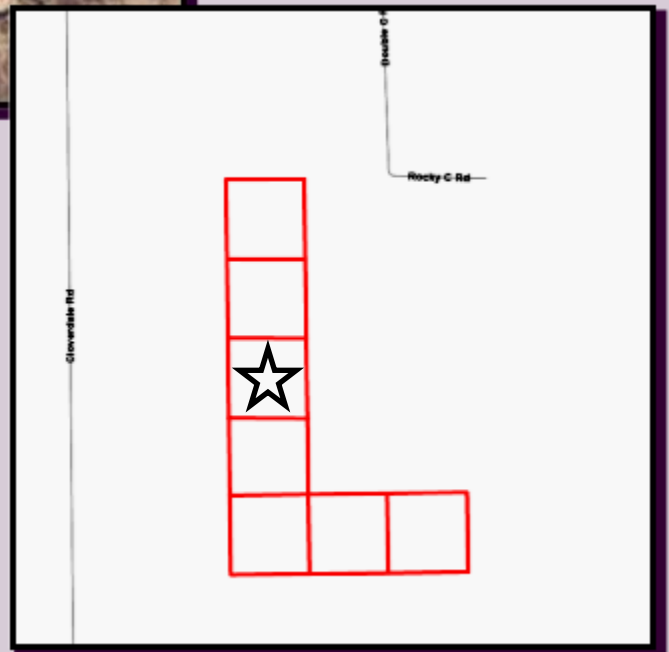
Partridge Creek runs through property.



www.co.pine.mn.us

Driving Directions:

Property is landlocked. NO LEGAL ACCESS.



Sandstone Township: 320-223-8360

Pine County Zoning: 320-216-4220

*Maps are for informational purposes only and may not be exact. All properties sold "as is" with no guarantees. Buyers are encouraged to thoroughly research properties before purchase. If improvements are intended check with local planning and zoning authorities, and if wetlands exist contact Pine County Zoning. Acreage descriptions are approximate estimates.
Please Note: Pine County makes no representations, warranties, nor guarantees with respect to access to tax forfeited lands sold. Subject to all existing easements of record and rights of way.*

For further information please contact the Pine County Land Department at 320-216-4225.