

# Pine County Land Department ♦ 2018 Tax Forfeit Land Auction



## TRACT #7 PARK TOWNSHIP

**PID—24.0053.000**

W 1/2 of the W 1/2; reserving for Pine County, its successors and assigns, a highway easement over, under, and across the south 50 feet thereof.

9-44-17 160 acres

**Appraised Value: \$67,900**



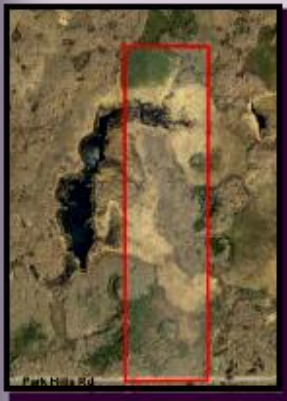
### Property Description:

Parcel is 160 acres:  
41 acres previously logged forested uplands; 8 acres forested uplands, 19 acres lowland conifers; and remainder open lowlands.

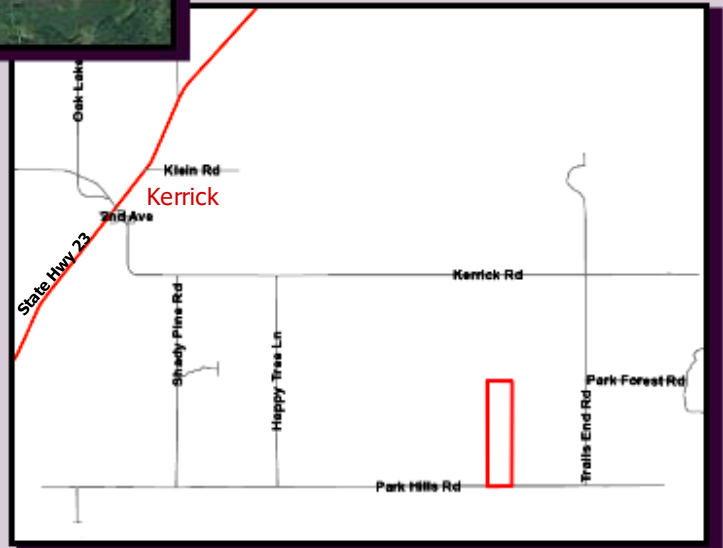
Additional Management  
A...

**SOLD**

[www.pine.mn.us](http://www.pine.mn.us)



**Driving Directions:**  
Located on the North side of Park Hills Rd., 3/4 mile West of Trails End Rd.



**Park Township: 218-496-5552 Pine County Zoning: 320-216-4220**

*Maps are for informational purposes only and may not be exact. All properties sold "as is" with no guarantees. Buyers are encouraged to thoroughly research properties before purchase. If improvements are intended check with local planning and zoning authorities, and if wetlands exist contact Pine County Zoning. Acreage descriptions are approximate estimates. Please Note: Pine County makes no representations, warranties, nor guarantees with respect to access to tax forfeited lands sold. Subject to all existing easements of record and rights of way.*

**For further information please contact the Pine County Land Department at 320-216-4225.**