

Pine County Land Department ♦ 2018 Tax Forfeit Land Auction



TRACT #8 SANDSTONE TOWNSHIP

PID—30.0295.000

SE ¼ of SE ¼

30-42-19 40 acres

Appraised Value: \$10,900



Property Description:

Parcel is 40 acres:
15 acres previously logged uplands,
25 open lowland acres.

Bear Creek runs through property.

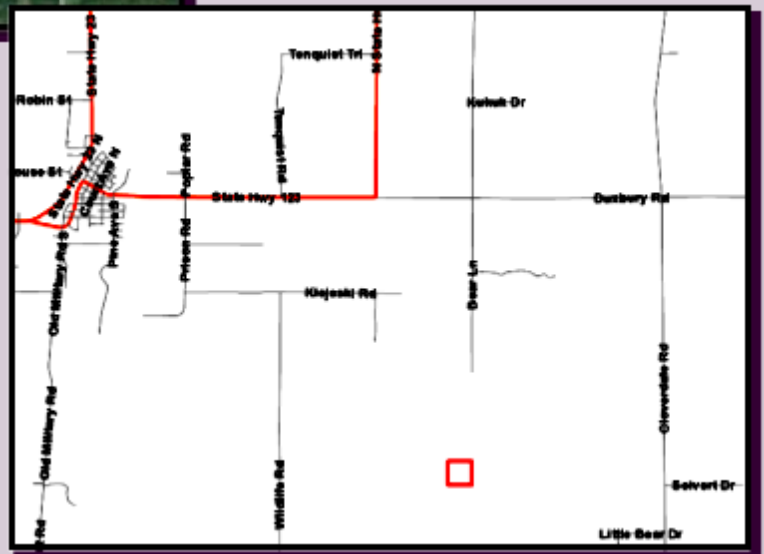
Property is landlocked.

SALE

www.pine.mn.us



Driving Directions:
Property is Landlocked-NO LEGAL ACCESS



Sandstone Township: 320-384-6644 Pine County Zoning: 320-216-4220

*Maps are for informational purposes only and may not be exact. All properties sold "as is" with no guarantees. Buyers are encouraged to thoroughly research properties before purchase. If improvements are intended check with local planning and zoning authorities, and if wetlands exist contact Pine County Zoning. Acreage descriptions are approximate estimates.
Please Note: Pine County makes no representations, warranties, nor guarantees with respect to access to tax forfeited lands sold. Subject to all existing easements of record and rights of way.*

For further information please contact the Pine County Land Department at 320-216-4225.