

Pine County Land Department ♦ 2018 Tax Forfeit Land Auction



TRACT #9 WILMA TOWNSHIP

PID—32.0097.000 split

N ½ of SE ¼, less the East 132' thereof. (Timber Value \$65,000)

11-42-17 76 Acres

Appraised Value: \$109,900



Property Description:

A 76 acre parcel:
Having forested uplands with a mix of open and wooded lowlands.

Road frontage.

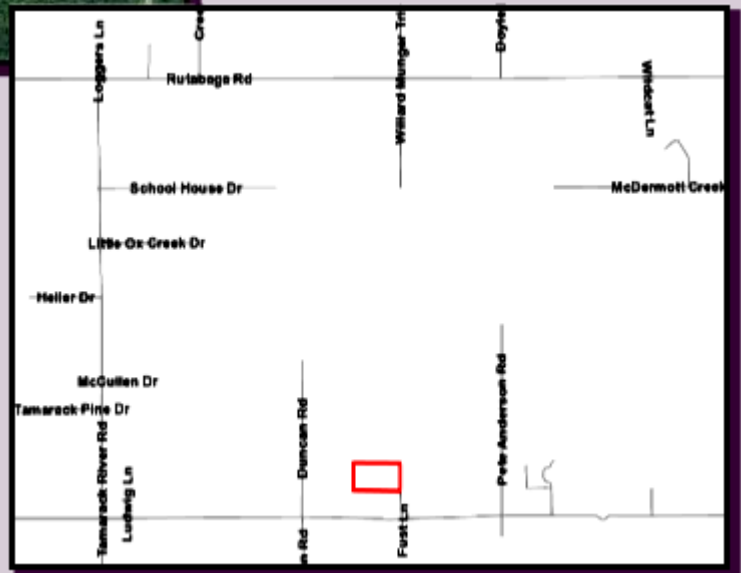
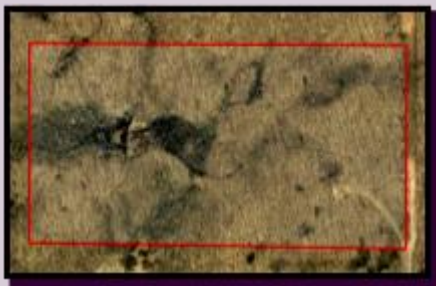
Timber value \$65,000

www.co.pine.mn.us



Driving Directions:

From Duxbury Road, turn North on Schmedeke Road. Travel approximately 1/4 of a mile to property.



Wilma Township: 320-245-2538 Pine County Zoning: 320-216-4220

Maps are for informational purposes only and may not be exact. All properties sold "as is" with no guarantees. Buyers are encouraged to thoroughly research properties before purchase. If improvements are intended check with local planning and zoning authorities, and if wetlands exist contact Pine County Zoning. Acreage descriptions are approximate estimates. Please Note: Pine County makes no representations, warranties, nor guarantees with respect to access to tax forfeited lands sold. Subject to all existing easements of record and rights of way.

For further information please contact the Pine County Land Department at 320-216-4225.