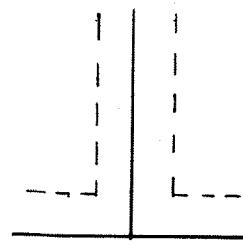


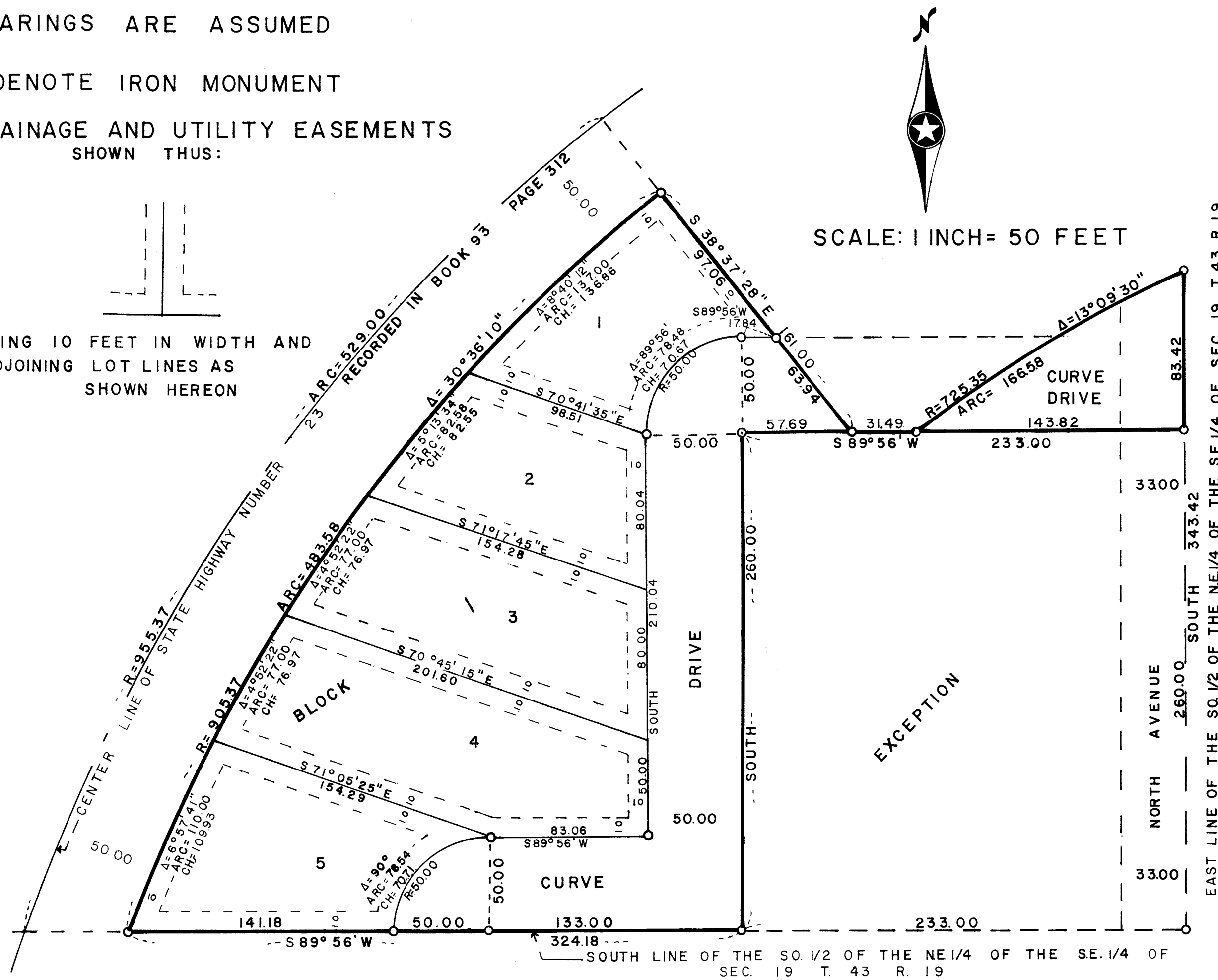
BEARINGS ARE ASSUMED

o DENOTE IRON MONUMENT

DRAINAGE AND UTILITY EASEMENTS SHOWN THUS:



BEING 10 FEET IN WIDTH AND ADJOINING LOT LINES AS SHOWN HEREON



SCALE: 1 INCH = 50 FEET

# ASKOV DEVELOPMENT 1ST ADDITION

OFFICIAL PLAT

In witness whereof Askov Development Corporation, a Minnesota Corporation, has caused these presents to be signed by its proper officers and its Corporate Seal to be hereunto affixed this 1ST day of SEPTEMBER A.D., 1972.

ASKOV DEVELOPMENT CORPORATION

IN PRESENCE OF:

Witness John G. Thunson Witness David J. O'Connell SIGNED John O'Brien its President  
Witness John G. Thunson Witness David J. O'Connell SIGNED John Pesheck its V. President

State of Minnesota  
County of PINE

On this 1ST day of SEPTEMBER A.D., 1972, before me, a Notary Public, within and for said County and State, personally appeared JOHN O'BRIEN and JOHN PESHECK, to me personally known, who being by each duly sworn did say that they are the PRESIDENT and VICE PRESIDENT, respectively, of the Askov Development Corporation, the Corporation named in the foregoing instrument, that the seal affixed to said instrument is the Corporate Seal of said Corporation, and said instrument was signed and sealed in behalf of said Corporation by authority of its Board of Directors and said JOHN O'BRIEN and JOHN PESHECK acknowledged said instrument to be the free act and deed of said Corporation.

John G. Thunson  
Notary Public, PINE County, Minnesota  
My Commission Expires DECEMBER 28, 1978

I hereby certify that I have surveyed the property described on this plat as ASKOV DEVELOPMENT 1ST ADDITION; That this plat is a correct representation of said survey; That all distances are correctly shown in feet and decimals of a foot; That all monuments have been correctly placed in the ground as shown; That the outside boundary lines are correctly designated; That there are no wet lands or public highways to be designated on the plat other than as shown thereon.

Morrell B. Rude  
Morrell B. Rude  
Land Surveyor Minnesota Registration No. 8195

State of Minnesota  
County of PINE

This Surveyors Certificate was subscribed and sworn to before me, a Notary Public, this 24 day of August A.D., 1972

Ann M. Ralph  
Notary Public, PINE County, Minnesota  
My Commission Expires Oct 7, 1972

The plat of ASKOV DEVELOPMENT 1ST ADDITION was accepted and approved by the Village Council of Askov, Minnesota, at a regular meeting thereof, held this 6th day of SEPT A.D., 1973

VILLAGE OF ASKOV  
By: Reginald Mayor By: Compass Clerk

This plat was approved as to form and execution on this 7th day of September A.D., 1972  
Howard W. Sedin  
Village Attorney, Village of Askov, Minnesota

I hereby certify that the taxes for the year 1972 on the property described herein are paid.

Ray J. Belmont  
County Treasurer, Pine County, Minnesota

I hereby certify that the taxes for the year 1971 and all prior years on the property described herein are paid.

Langston Heller  
County Auditor, Pine County, Minnesota

I hereby certify that the plat of ASKOV DEVELOPMENT 1ST ADDITION was filed in this office on the 7 day of September A.D., 1972, at 2:01 o'clock P.M., Micro Number 231020.

Arin Biddle  
Register of Deeds, Pine County, Minnesota

KNOW ALL MEN BY THESE PRESENTS: That Askov Development Corporation, a Minnesota Corporation, owners and proprietors; of the following described property situate in the County of Pine, State of Minnesota to wit:

That part of the South Half of the Northeast Quarter of the Southeast Quarter (S $\frac{1}{2}$  of NE $\frac{1}{4}$  of SE $\frac{1}{4}$ ) of Section Nineteen (19), Township Forty-three (43), Range Nineteen (19), Pine County, Minnesota, except a piece of land beginning at the Southeast corner of the above described land and thence running due North Two Hundred Sixty (260) feet; Thence due West Two Hundred Thirty-three (233) feet; Thence due South a distance of Two Hundred Sixty (260) feet; and thence due East a distance of Two Hundred Thirty-three (233) feet to the point of beginning.

Which lies Southeasterly of the Southeasterly right of way of State Highway No. 23 as described in the final certificate recorded in Book 93, Page 312, in the office of the Register of Deeds, in Pine County, Minnesota.

Have caused the same to be surveyed and platted as ASKOV DEVELOPMENT 1ST ADDITION, and do hereby denote and dedicate to the public for public use forever, the drive and the drainage and utility easements as shown on this plat.

And also that no entrances will be allowed from Lots 1, 2, 3, 4, and 5 onto State Highway No. 23.

MORRELL B. RUDE  
LAND SURVEYOR  
MINNESOTA REGISTRATION  
NUMBER 8195