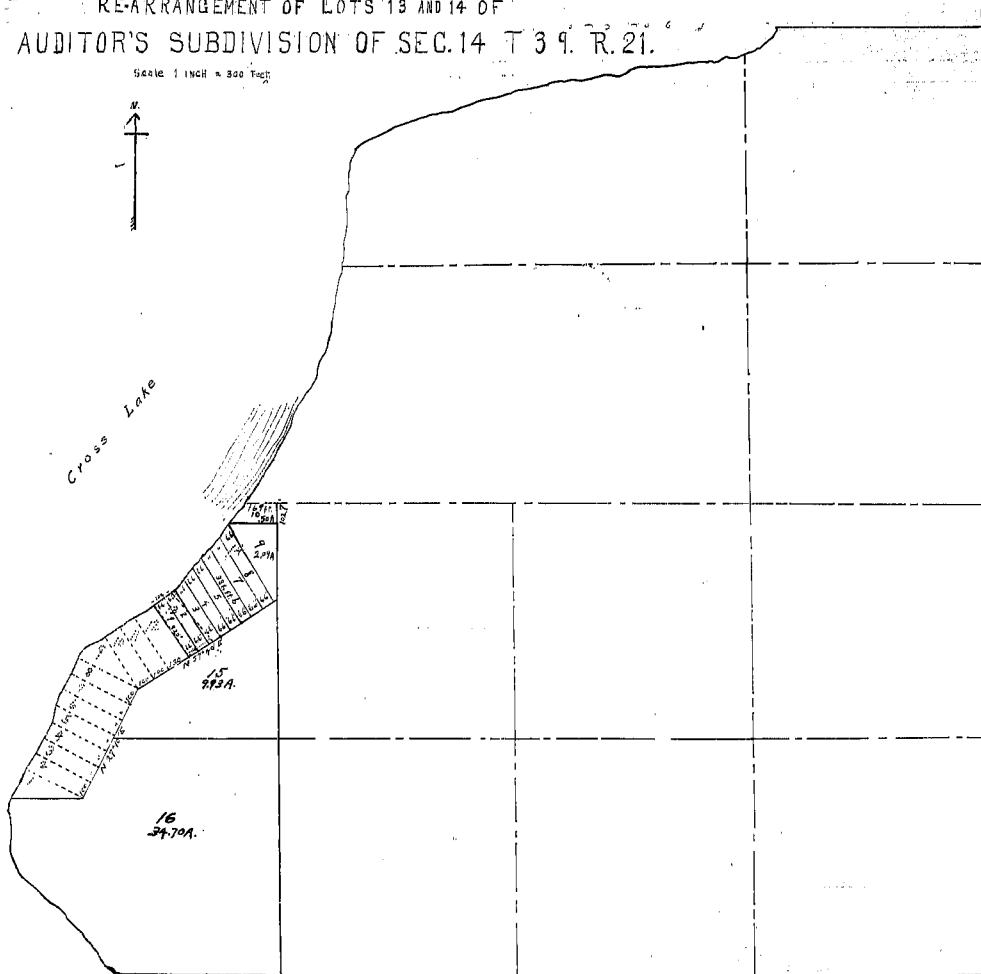
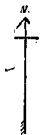


AUDITOR'S  
 RE-ARRANGEMENT OF LOTS 13 AND 14 OF  
 AUDITOR'S SUBDIVISION OF SEC. 14 T 39 R. 21.

Scale 1 INCH = 800 FEET



PLAT OF AUDITOR'S RE-ARRANGEMENT OF LOTS 13 AND 14 OF AUDITOR'S SUBDIVISION OF  
 SECTION 14, T 39 R 21 AS SUBDIVIDED AND PLATTED BY ME JULY 21, 1926.

*W. W. M. For*  
 COUNTY SURVEYOR

Office of Register of Deeds,  
 Des Moines, Iowa.  
 I hereby certify that the within  
 instrument was filed in the office  
 on the 18th day of July, 1926.  
*W. W. M. For*  
 Register of Deeds