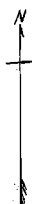


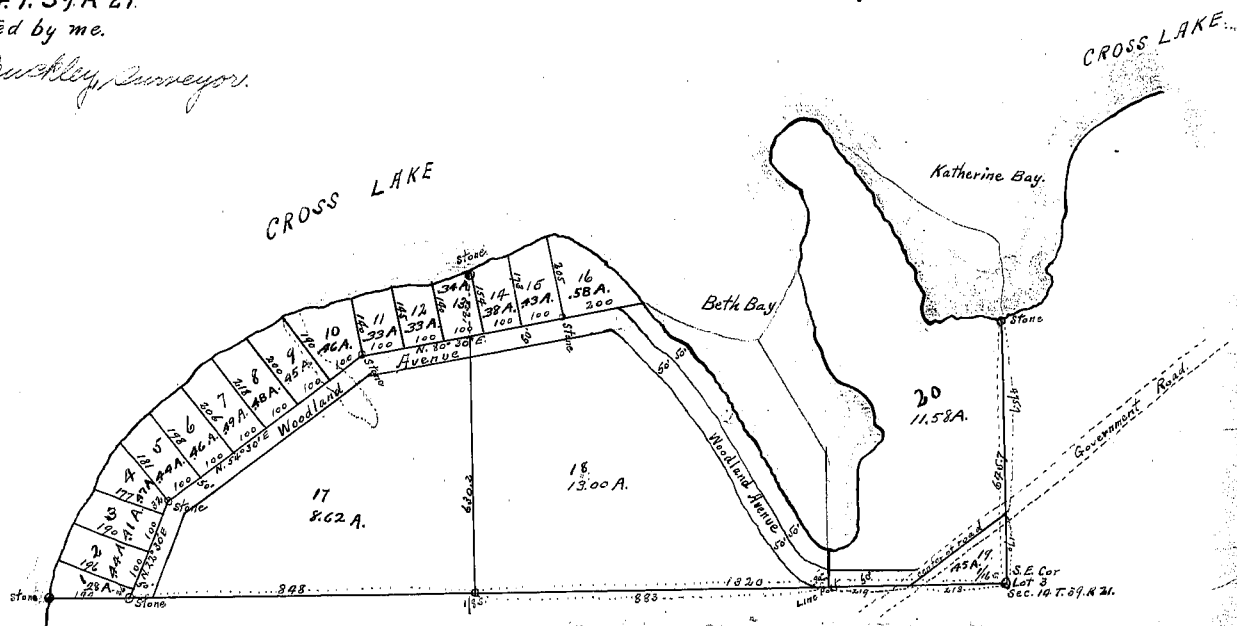
PLAT OF LOT 3, SEC. 14, T. 39, R. 21.
as subdivided and platted by me.

Oct. 9th 1911. W. J. Buskley, Surveyor.

AUDITOR'S SUBDIVISION OF LOT 3 SECTION 14, T. 39, R. 21.



Scale 200' = 1"



Filed for Record this 30th day of November
A. D. 1911 at 5:00 P. M. in County Clerk's Office
James H. Wood, Surveyor