

COUNTRY VIEW ESTATES

KNOW ALL MEN BY THESE PRESENTS: That D.K.M. Enterprises, Inc., a Minnesota corporation, owner and proprietor and Lakeland Construction Finance, L.L.C., a Minnesota corporation, mortgage holder of the following described property situated in the County of Pine, State of Minnesota, to wit:

The East Half of the Southwest Quarter of Southeast Quarter of Section 15, Township 38, Range 21, Pine County, Minnesota.

AND
The Southeast Quarter of the Southeast Quarter of Section 15, Township 38, Range 21, Pine County, Minnesota, except that part described as follows:

Beginning at the southeast corner of said Southeast Quarter of the Southeast Quarter, thence northerly along the east line of said Southeast Quarter of the Southeast Quarter 233.00 feet, thence westerly, parallel with the north line of said Southeast Quarter of the Southeast Quarter 1175.00 feet, thence southerly, parallel with the east line of said Southeast Quarter of the Southeast Quarter 227.35 feet, more or less, to the south line of said Southeast Quarter of the Southeast Quarter; thence easterly along said south line 1175.05 feet, more or less, to the point of beginning.

Subject to State Highway No 70 along the south line thereof

have caused the same to be surveyed and platted as COUNTRY VIEW ESTATES, in the City of Rock Creek and do hereby donate and dedicate to the public for public use forever STATE HIGHWAY NO 70 LORIE LANE, JOANNA WAY, and the drainage and utility easements as shown on this plat, and also dedicate the right of access along STATE HIGHWAY NO 70 as shown on this plat.

In witness whereof said D.K.M. Enterprises, Inc., a Minnesota corporation, has caused the same to be signed by its proper officer this 21st day of July, 2003.

Ken Puckett
Ken Puckett
President

Craig Johnson
Craig Johnson
Vice President

STATE OF MINNESOTA)
COUNTY OF Dakota

The foregoing instrument by Ken Puckett, President, and Craig Johnson, Vice President, of D.K.M. Enterprises, Inc., a Minnesota corporation, on behalf of the corporation was acknowledged before me this 21st day of July, 2003.

Notary Public
Notary Public, Dakota County, Minnesota
My Commission Expires Jan 31, 2005

In witness whereof said Lakeland Construction Finance, L.L.C., a Minnesota corporation, has caused the same to be signed by its proper officer this 21st day of July, 2003.

Robert J. Machacek
Robert J. Machacek
Chief Operating Officer

STATE OF MINNESOTA)
COUNTY OF Dakota

The foregoing instrument by Robert J. Machacek, Chief Operating Officer, of Lakeland Construction Finance, L.L.C., a Minnesota corporation, on behalf of the corporation was acknowledged before me this 21st day of July, 2003.

Notary Public
Notary Public, Dakota County, Minnesota
My Commission Expires Jan 31, 2005

I hereby certify that I have surveyed and platted the property described on this plat as COUNTRY VIEW ESTATES, that this plat is a correct representation of the survey, that all distances are correctly shown on the plat in feet and hundredths of a foot, that all monuments have been will be correctly placed in the ground as shown within one year from recording, that the outside boundary lines are correctly designated on the plat, and that there are no wet lands as defined in MS 505.02, Subd. 1, or public highways to be designated other than as shown.

John A. Rengo
John A. Rengo
Minnesota License No. 25344

STATE OF MINNESOTA)
COUNTY OF RAMSEY

The foregoing Surveyor's Certificate by John A. Rengo, Minnesota Licensed Surveyor No. 25344, was acknowledged before me this 15th day of July, 2003.

Notary Public
Notary Public, Anoka County, Minnesota
My Commission Expires January 31, 2005

Approved by the City Council of the City of Rock Creek, Pine County, Minnesota, this 07th day of August, 2003, and is in compliance with the provisions of Chapter 505.03, Subdivision 2, Minnesota Statutes.

Mayor
Mayor
Clerk

This plat was approved as to form and execution this 11th day of August, 2003.

Rock Creek City Attorney
Rock Creek City Attorney

PINE COUNTY AUDITOR
No delinquent taxes and transfers entered this 11th day of August, 2003.

County Auditor
County Auditor

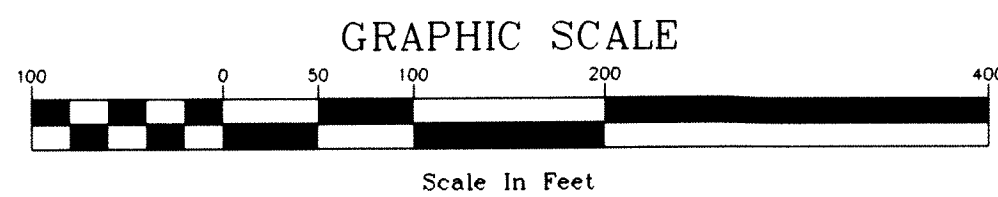
PINE COUNTY TREASURER
I hereby certify that the taxes for the year 2003 on the property described herein are paid this 11th day of August, 2003.

County Treasurer
County Treasurer

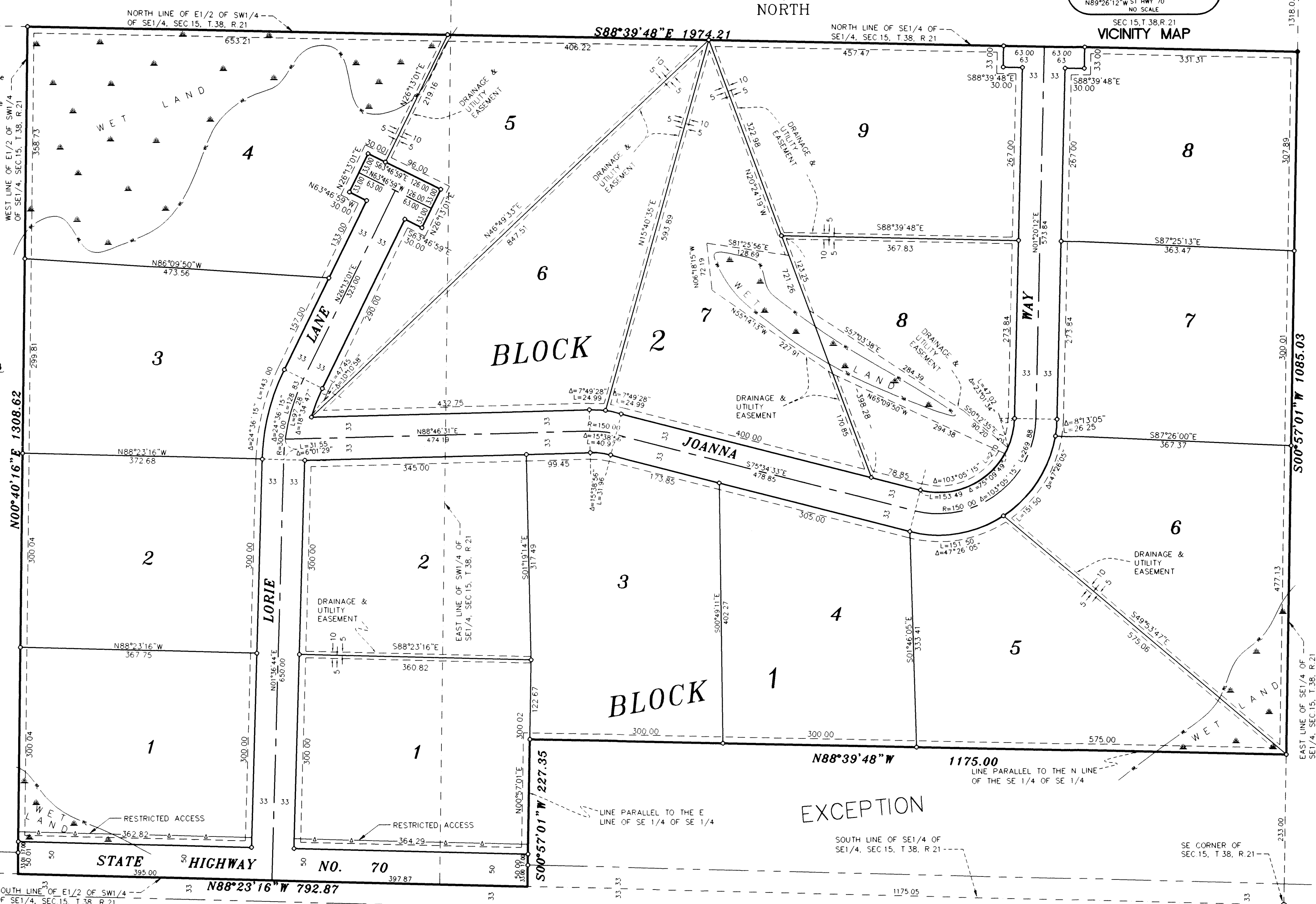
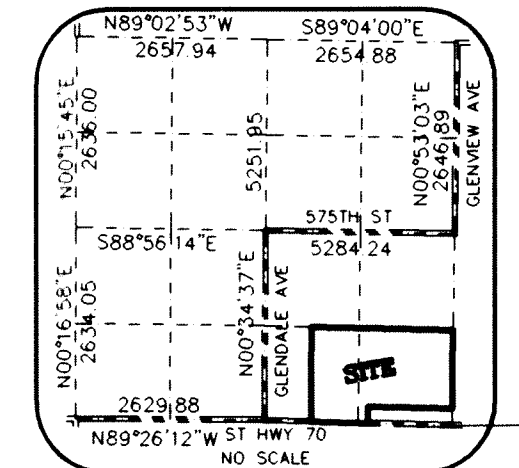
PINE COUNTY RECORDER
Document No. 423851
I hereby certify that this instrument was filed in the Office of the County Recorder for record on this 11th day of August, 2003, at 1 o'clock P.M., and was duly recorded in Pine County Records.

County Recorder
County Recorder

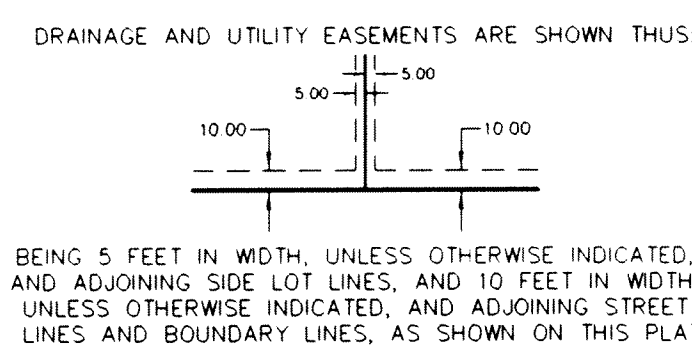
- LEGEND
- DENOTES PINE COUNTY MONUMENT
 - DENOTES IRON MONUMENT FOUND
 - DENOTES A 1/2 INCH BY 14 INCH IRON PIPE MONUMENT, MARKED RLS 25344, THAT WILL BE SET WITHIN ONE YEAR OF THE RECORDING OF THIS PLAT.



THE BASIS OF BEARINGS FOR THIS DRAWING IS THE PINE COUNTY COORDINATE SYSTEM BY MNDOT, NAD 1983, HARN 1996 ADJUSTMENT



NOTE: THE MINNESOTA DEPARTMENT OF NATURAL RESOURCES, UNITED STATES CORPS OF ENGINEERS AND OTHER WATER MANAGEMENT AGENCIES HAVE CATEGORIZED VARIOUS WETLANDS, WHICH ARE NOT ACKNOWLEDGED BY CHAPTER 505.02, SUBDIVISION 1 OF MINNESOTA STATUTES AND MAY NOT BE SHOWN HEREON. DEVELOPMENT OF LANDS CONTAINING SAID WETLANDS MAY BE SUBJECT TO SPECIAL CONDITIONS OR LIMITATIONS.



METRO
LAND SURVEYING & ENGINEERING
1639 Main St N, Suite 7, Pine City, MN 55063
Telephone: (320)629-3267 Fax: (320)629-0176
E-mail: metro@ecenet.com