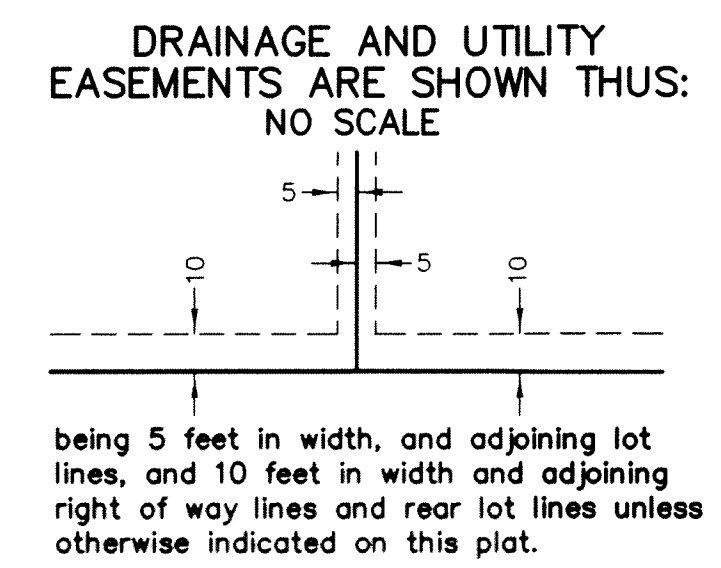
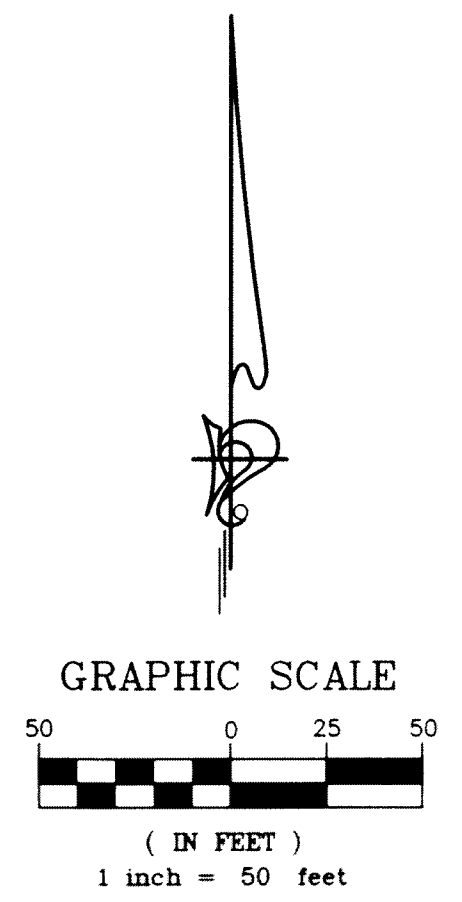
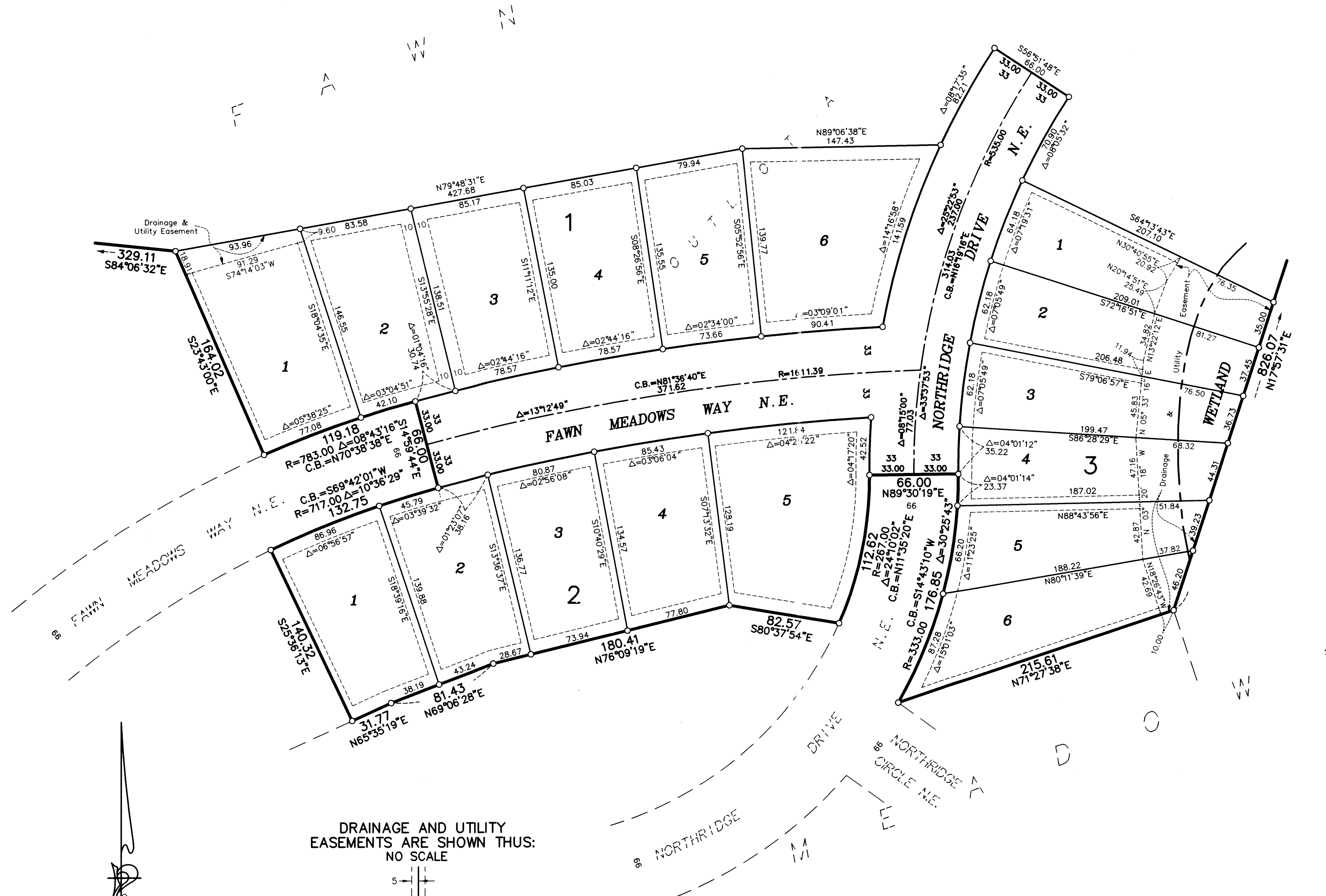


FAWN MEADOWS SECOND ADDITION

'INSET A'
(SEE SHEET 1 OF 2 SHEETS)



Orientation of this plat is based on the North line of Outlot A, FAWN MEADOWS, Pine County, Minnesota, which has an assumed bearing of North 89°06'38" East.

- Denotes iron monument found
- Denotes 1/2 inch by 14 inch iron monument set and marked with license number 20595

All monuments required by Minnesota Statute, whether shown on this plat or not, will be set within one year of the recording date of this plat, and shall be evidenced by a 1/2 inch by 14 inch iron pipe marked by RLS 20595.