

FLEMING

ESTATES

OFFICIAL PLAT

KNOW ALL MEN BY THESE PRESENTS: That Dennis Frandsen and Company, Inc., a Minnesota Corporation, owner and proprietor of the following described property situate in the County of Pine, State of Minnesota, to-wit:

The Southeast Quarter, the East Half of the Northeast Quarter and the Southwest Quarter of the Northeast Quarter, all in Section 30, Township 43, Range 18, Pine County, Minnesota.

Have caused the same to be surveyed and platted as FLEMING ESTATES, and do hereby donate and dedicate to the public for public use forever the roads and the drainage and utility easements as shown on this plat.

In witness whereof, Dennis Frandsen and Company, Inc., a Minnesota Corporation, has caused these presents to be signed by its proper officers and its corporate seal to be hereunto affixed this 18th day of February A.D., 19 80.

S I G N E D

DENNIS FRANSDEN AND COMPANY, INC.

Dennis Frandsen its President and Debra A. Jacobson its Secretary

State of Minnesota County of Chicago The foregoing instrument was acknowledged before me this 18th day of February A.D., 19 80, by Dennis Frandsen, President and Debra A. Jacobson, Secretary of the Dennis Frandsen and Company, Inc., a Minnesota Corporation, on behalf of the corporation.



Thomas F. Botten
Notary Public, Chicago County, Minnesota
My Commission Expires Aug. 17, 1983

I hereby certify that I have surveyed the property described on this plat as FLEMING ESTATES; That this plat is a correct representation of said survey; That all distances are correctly shown in feet and decimals of a foot; That all monuments have been correctly placed in the ground as shown; That the outside boundary lines are correctly designated; That there are no wet lands or public highways to be designated on the plat other than as shown thereon.

Morrell B. Rude
Morrell B. Rude
Land Surveyor Minnesota Registration No. 8195

State of Minnesota
County of Pine

This Surveyors Certificate was subscribed and sworn to before me, a Notary Public, this 18th day of February A.D., 19 80, by Morrell B. Rude, Land Surveyor.

Morrell B. Rude
Notary Public, Pine County, Minnesota
My Commission Expires September 21, 1986

I hereby certify that the taxes for the year 1980 on the property described herein are paid.

Ronald H. Schust
County Treasurer, Pine County, Minnesota

I hereby certify that the taxes for all prior years on the property described herein are paid.

Lawrence D. Perreault
County Auditor, Pine County, Minnesota

The plat was approved as to form and execution on this 5th day of March A.D., 19 80.

John K. Cullen
County Attorney, Pine County, Minnesota

The plat of FLEMING ESTATES was accepted and approved by the County Board of Pine County, Minnesota, at a regular meeting thereof, held this 5 day of March A.D., 19 80.

COUNTY BOARD OF PINE COUNTY
By: Kenneth L. Remington Chairman By: Lawrence D. Perreault Auditor

I hereby certify that the plat of FLEMING ESTATES was filed in this office on the 1 day of April A.D., 19 80, at 9 o'clock A. M., Micro Number 263818.

Arise Bible
County Recorder, Pine County, Minnesota

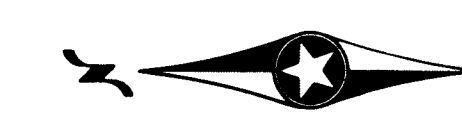
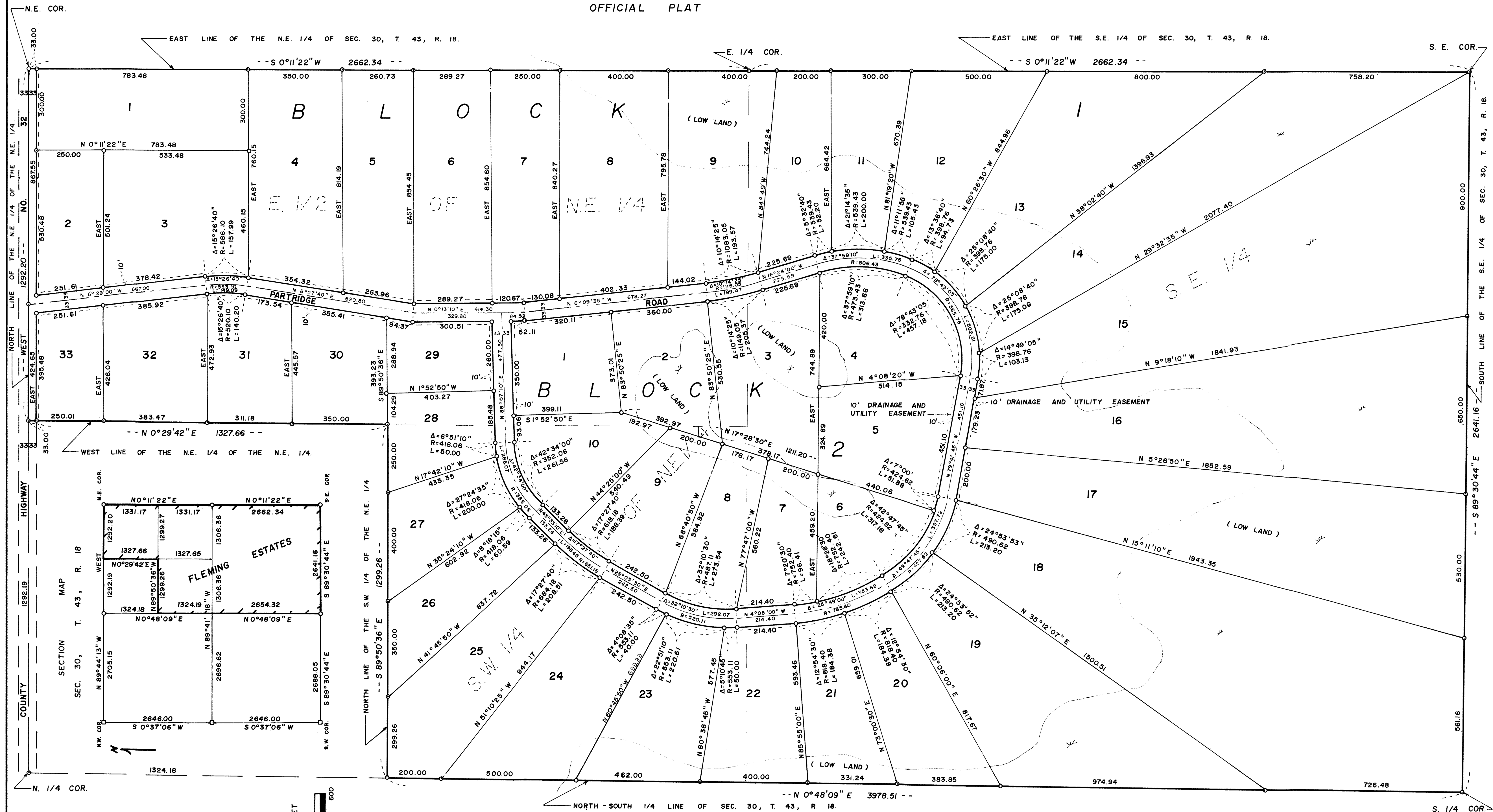
Torrens Doc. No. 2956
OFFICE OF REGISTRAR OF TITLES
STATE OF MINNESOTA
COUNTY OF PINE

I hereby certify that the within instrument was filed in this office on the 1 day of April, 1980 at 9 o'clock A. M.
Arise Bible
Registrar of Titles

By: _____
Deputy Registrar of Titles

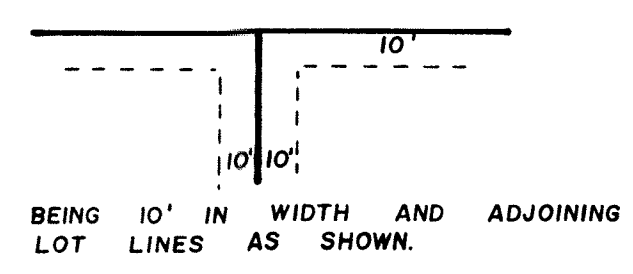
FLEMING ESTATES

OFFICIAL PLAT



SCALE: 1 INCH = 200 FEET

DRAINAGE AND UTILITY EASEMENTS SHOWN THUS:



"O" DENOTES 1/2" IRON PIPE MARKED R.L.S. NO. 8195.

THIS PLAT WAS PREPARED BY MORRELL B RUDE REGISTERED LAND SURVEYOR NO. 8195.