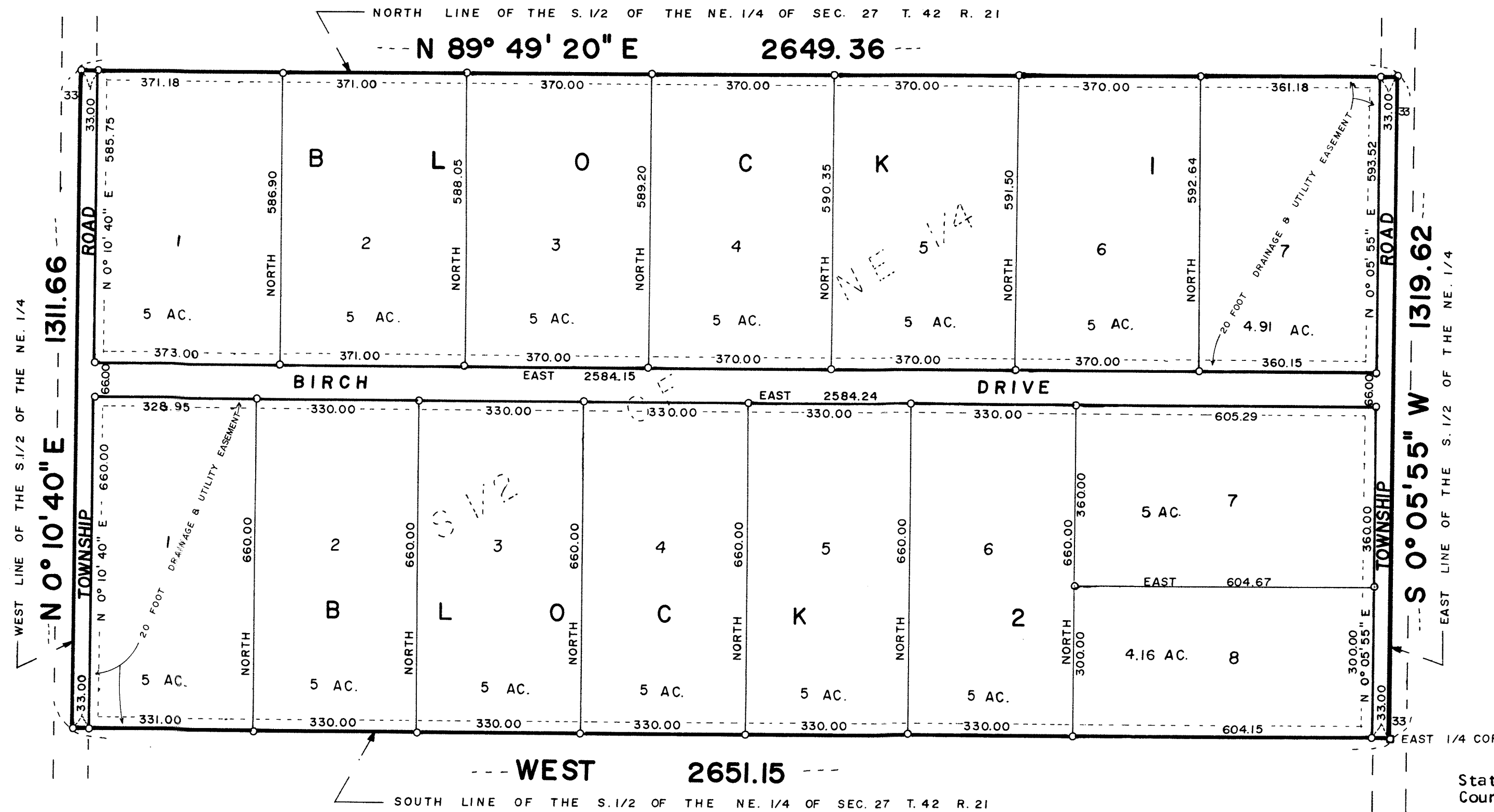
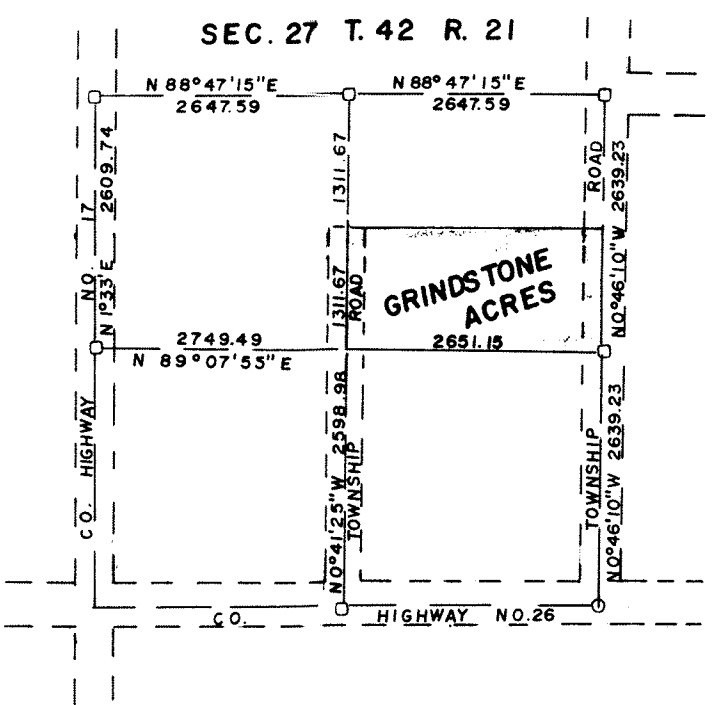
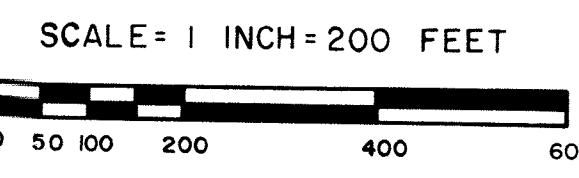


GRINDSTONE ACRES

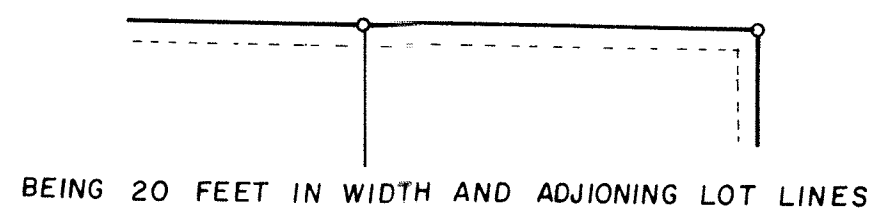
SITE MAP



" COPY "



o DENOTES 1/2" IRON PIPE MARKED R.L.S. NO. 8195.
 □ DENOTES PINE COUNTY LAND CORNER MONUMENT.
 THE SOUTH LINE OF THE S.1/2 OF THE NE. 1/4 IS ASSUMED A BEARING OF WEST.
 DRAINAGE AND UTILITY EASEMENTS SHOWN THUS:



KNOW ALL MEN BY THESE PRESENTS: That Dennis Frandsen and Company, Inc., a Minnesota Corporation, owner and proprietor of the following described property situate in the County of Pine, State of Minnesota, to-wit:

The South Half of the Northeast Quarter of Section 27, Township 42, Range 21, Pine County, Minnesota.

Have caused the same to be surveyed and platted as GRINDSTONE ACRES and do hereby donate and dedicate to the public for public use forever, Birch Drive, township roads, and the drainage and utility easements as shown on this plat.

In witness whereof, Dennis Frandsen and Company, Inc., a Minnesota Corporation, has caused these presents to be signed by its proper officers and its corporate seal to be hereunto affixed this 5th day of February A.D., 1979.

S I G N E D

Dennis Frandsen and Company, Inc.
Dennis Frandsen its President
Debra A. Jacobson its Secretary

State of Minnesota County of Chicago The foregoing instrument was acknowledged before me this 5th day of February A.D., 1979, by Dennis Frandsen, President and Debra A. Jacobson, Secy. of the Dennis Frandsen and Company, Inc., a Minnesota Corporation, on behalf of the corporation.



Susan K. Shippin
 Notary Public, Chicago County, Minnesota
 My Commission Expires 8-24-85

I hereby certify that I have surveyed the property described on this plat as GRINDSTONE ACRES; That this plat is a correct representation of said survey; That all distances are correctly shown in feet and decimals of a foot; That all monuments have been correctly placed in the ground as shown; That the outside boundary lines are correctly designated; That there are no wet lands or public highways to be designated on the plat other than as shown thereon.

Morrell B. Rude
 Morrell B. Rude
 Land Surveyor Minnesota Registration No. 8195

State of Minnesota County of Pine This Surveyors Certificate was subscribed and sworn to before me, a Notary Public, this 2nd day of February A.D., 1979 by Morrell B. Rude, Land Surveyor.

Morrell B. Rude
 Notary Public, Pine County, Minnesota
 My Commission Expires September 22, 1979

This plat was approved as to form and execution on this 7th day of February A.D., 1979.

John J. Pearl
 Assistant County Attorney, Pine County, Minnesota

I hereby certify that the taxes for the year 1979 on the property described herein are paid.

Rasmus H. Schult
 County Treasurer, Pine County, Minnesota

I hereby certify that the taxes for the year 1978 and all prior years on the property described herein are paid.

Laurance D. Ahrens
 County Auditor, Pine County, Minnesota

The plat of GRINDSTONE ACRES was accepted and approved by the County Board of Pine County, Minnesota, at a regular meeting thereof, held this 7th day of February A.D., 1979.

COUNTY BOARD OF PINE COUNTY
 By: Ernest Kacch Chairman By: Laurance D. Ahrens Auditor

I hereby certify that the plat of GRINDSTONE ACRES was filed in this office on the 8 day of February A.D., 1979, at 8 o'clock A. M., Micro Number 258410.

Arin Bible
 County Recorder, Pine County, Minnesota