

Harlis.

Pine Co. Minn.

IN W 1/2 SEC. 1, T. 45 N. R. 16 W.

Scale 1"=100'

KNOW ALL MEN BY THESE PRESENTS, that Tri-State Land Company, a corporation organized and existing under the laws of the State of Minnesota, the owner and proprietor of that certain land situated in the County of Pine and State of Minnesota and being all that portion of the West 1/2 of Section 1, Township 45 N, Range 16 W, described as follows, to-wit:

Commencing at the center of Section (1) Township 45 N, Range 16 W, thence west on east and west 1/4 line distant Five hundred forty six and three tenths (546.3) feet to a point, thence southerly at an angle of 88°40' to the left a distance of One hundred ninety seven and eight tenths (197.8) feet to an iron monument and place of beginning, thence southerly from this place of beginning on a continuation of last mentioned line distant Seven hundred seventy and two tenths (770.2) feet to an iron monument, thence west at an angle of 88°40' to the right distant Six hundred three and nine tenths (603.9) feet to an iron monument, thence north at right angles distant Seven hundred and seventy (770) feet to an iron monument, thence east at right angles distance Six hundred and twenty (620) feet to an iron monument and place of beginning.

Has caused the same to be surveyed and platted and hereafter known as Blocks One (1), Two (2), Three (3) and Four (4) of Harlis and hereby donates and dedicates to public use forever all Streets, Avenues and Alleys thereby shown.

IN WITNESS WHEREOF, the said Tri-State Land Company has caused these presents to be signed by E. Pennington President, its Corporate Seal to be affixed hereto and the same to be countersigned by Henry B. Dike, Secretary, this 17th day of October, A. D. 1911.

In presence of: *A. M. Harlis* (Corporate Seal) BY *E. Pennington* (President) *Henry B. Dike* (Secretary)

T. S. L. Co. (Corporate Seal) BY *E. Pennington* (President) *Henry B. Dike* (Secretary)

BE IT KNOWN, that on this 17th day of October, A. D. 1911, before me appeared E. Pennington and Henry B. Dike to me personally known who each being duly sworn, did say, that they are the President and Secretary, respectively, of the Tri-State Land Company, and that the seal affixed to the foregoing instrument is the Corporate Seal of said corporation and that said instrument was signed and sealed in behalf of said corporation by authority of its Board of Directors, and said E. Pennington and Henry B. Dike acknowledged said instrument to be the free act and deed of said corporation.

A. M. Harlis (Notarial Seal) Notary Public, Hennepin County, Minn. My Commission expires Oct. 31, 1915.

I hereby certify that I have surveyed and platted the property described in this plat as Blocks One (1), Two (2), Three (3) and Four (4) of Harlis, that this plat is a correct representation of said survey, that all distances are correctly shown on the plat in feet and decimals of a foot, that all monuments for the guidance of future surveys have been correctly placed in the ground as shown on the plat, that the outside boundary lines are correctly designated on the plat, that the topography of the land is correctly shown on the plat, and that there are no wet lands or public highways to be designated on said plat other than as shown hereon.

R. H. Sublette (Notarial Seal) Surveyor.

on this 2nd day of October, A. D. 1911, personally appeared R. H. Sublette, to me well known and acknowledged that he executed the foregoing certificate as his free act and deed.

A. J. Cassidy (Notarial Seal) Notary Public, Hennepin County, Minn. My Commission expires June 8th 1917.

I hereby certify that the within plat of Harlis was duly submitted to the Board of County Commissioners of Pine County, Minn. this 4th day of Dec. A. D. 1911, and the same was approved by resolutions duly adopted by said Board of County Commissioners.

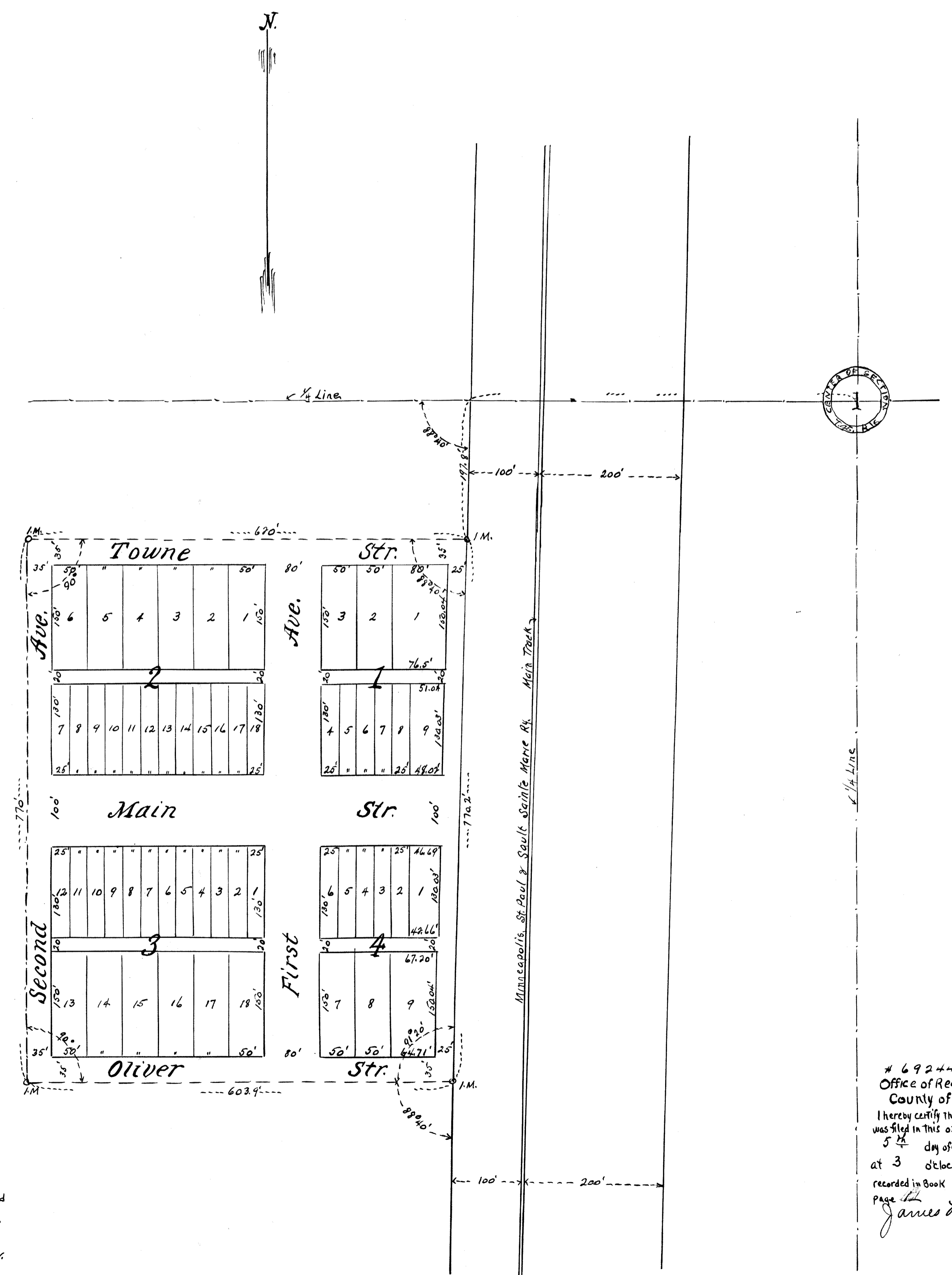
Edward Clough (Notarial Seal) Chairman, Board of County Commissioners, Pine County, Minn.

I hereby certify that an exact duplicate of the within plat of Harlis was filed for record in the office of the County Auditor, Pine County, of Pine County, Minn. this 5th day of December A. D. 1911.

W. H. Hamlin (Notarial Seal) County Auditor, Pine Co. Minn.

I hereby certify that taxes for the year 1910 on lands described within are paid. *W. H. Hamlin* County Treasurer.

Taxes Paid and Transfer Entered this 5th day of December 1911. *W. H. Hamlin* County Auditor.



69244
Office of Register of Deeds
County of Pine, Minn.
I hereby certify that the within instrument was filed in this office for record on the 5th day of December A. D. 1911, at 3 o'clock P. M. and was duly recorded in Book of Plats Page 122
James H. Haudel
REGISTER OF DEEDS.