

SEC.31, T.40N, R.20W
OF THE 4TH P.M.
MUNCH TOWNSHIP
PINE COUNTY, MN

HEGGE ADDITION

KNOW ALL PERSONS BY THESE PRESENTS: That Terry L. Hegge and Valorie L. Hegge, husband and wife, fee owners and Northwoods Bank of Minnesota, organized and existing under the laws of the State of Minnesota, mortgagee of the following described property situated in the County of Pine, State of Minnesota, to wit:

South 500 feet of the Fractional Southwest Quarter of Southwest Quarter (SW1/4 of SW1/4), Section 31, Township 40 North, Range 20 West, of the 4th Principal Meridian, Pine County, Minnesota.

Have caused the same to be surveyed and platted as HEGGE ADDITION and do hereby donate and dedicate to the County of Pine in fee title for public use forever that part of County State Aid Highway No. 14 as shown on this plat. Also donating and dedicating to the County of Pine in fee title that part of County State Aid Highway No. 15 as shown on this plat. And also dedicating to the public for public use forever that part of Twilight Lane as shown on this plat. And also dedicating to the public for public use forever the easements as shown on this plat for drainage and utility purposes.

In witness whereof said Terry L. Hegge and Valorie L. Hegge have hereunto set our hands this 17 day of September, 2007.

Terry L. Hegge
Terry L. Hegge
Valorie L. Hegge
Valorie L. Hegge

STATE OF MINNESOTA
COUNTY OF PINE

The foregoing instrument was acknowledged before me this 17 day of September, 2007 by Terry L. Hegge and Valorie L. Hegge, husband and wife.

Eugene J. Lalonde III
EUGENE J. LALONDE III

Notary Public, PINE County, Minnesota

My Commission expires 1/31/2009

Also in witness whereof said Northwoods Bank of Minnesota has caused these presents to be signed by its officers this 17 day of September, 2007.

NORTHWOODS BANK OF MINNESOTA

By: Tammy A. Masters
Tammy A. Masters, Vice President

STATE OF MINNESOTA
COUNTY OF PINE

The foregoing instrument was acknowledged before me this 17 day of September, 2007, by Tammy A. Masters, Vice President of Northwoods Bank of Minnesota, organized and existing under the laws of the State of Minnesota, on behalf of said bank.

Eugene J. Lalonde III
EUGENE J. LALONDE III

Notary Public, PINE County, Minnesota

My Commission expires 1/31/2009

I hereby certify that I have surveyed and platted the land described on this plat as HEGGE ADDITION, and that this plat is a correct representation of the boundary survey; that all mathematical data and labels are correctly designated on the plat; that all monuments depicted on the plat have been correctly set; that as of the date of this certificate, all water boundaries and wetlands, as defined in Minnesota Statutes 505.01, Subd. 3, are shown and labeled on the plat; and that all public ways are shown and labeled on the plat.

Frank S. Kriz
Frank S. Kriz, Land Surveyor
Minnesota License No. 13293

STATE OF MINNESOTA
COUNTY OF Mille Lacs

The foregoing Surveyor's Certificate was acknowledged before me this 11th day of September, 2007 by Frank S. Kriz, Land Surveyor, Minnesota License No. 13293.

Seth M. Monroe
Seth M. Monroe

Notary Public, Sherburne County, Minnesota

My Commission expires Jan. 31, 2008

We do hereby certify that on the 25 day of September, 2007, the Board of Township Supervisors of Munch Township approved this plat.

Harold Reiser
Chairman
Date: also least

Approved by the Pine County Surveyor, Pine County, Minnesota, this 18th day of September, 2007, and is in compliance with the provisions of Chapter 505 and Chapter 381.12 Minnesota Statutes.

Rob T. Mast
Pine County Surveyor

Approved as to form and execution this 16 day of October, 2007.

Jeff K. Cook
Pine County Attorney

We do hereby certify that on the 18 day of September, 2007, the Board of Commissioners of Pine County, Minnesota, approved this plat and that the conditions of Minnesota Statutes Chapter 505.03, Subdivision 2, have been fulfilled.

Glenn Shuman
Clerk
Peggy Nelson
Chairman, Board of County Commissioner

No delinquent taxes and transfers entered this 18th day of October, 2007.

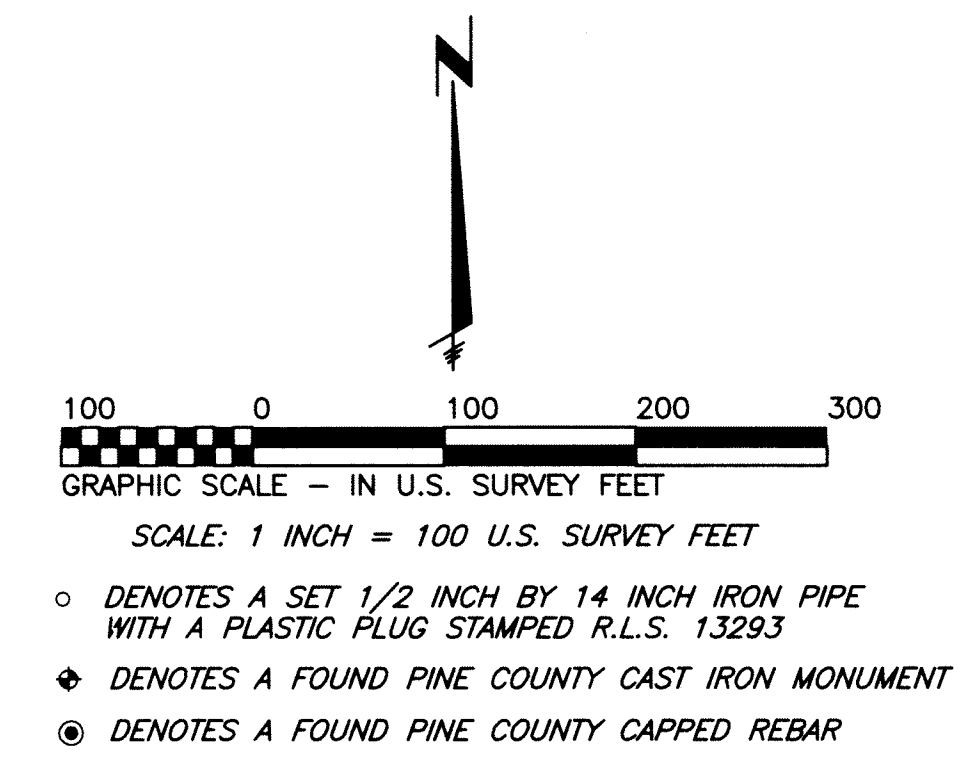
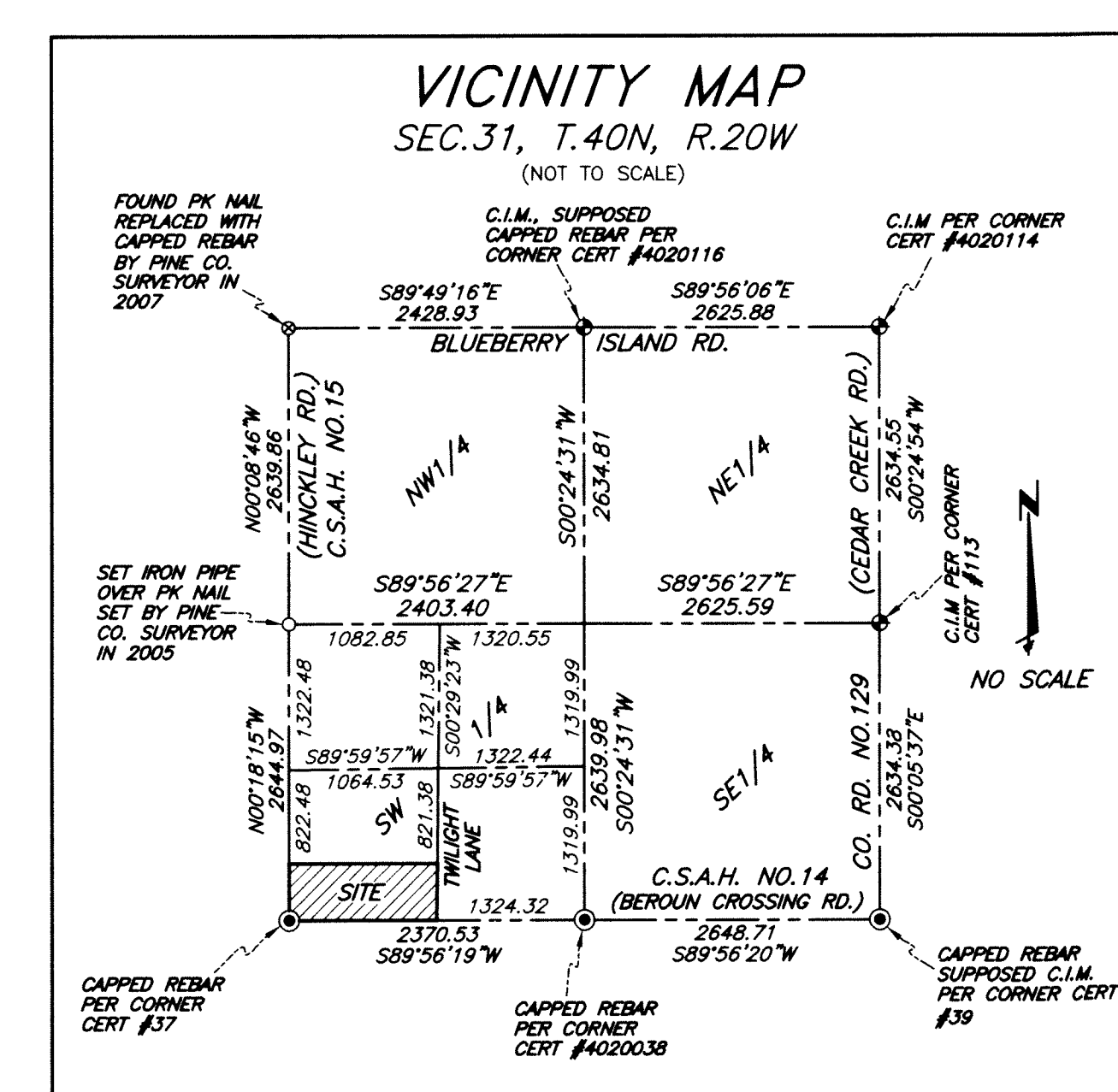
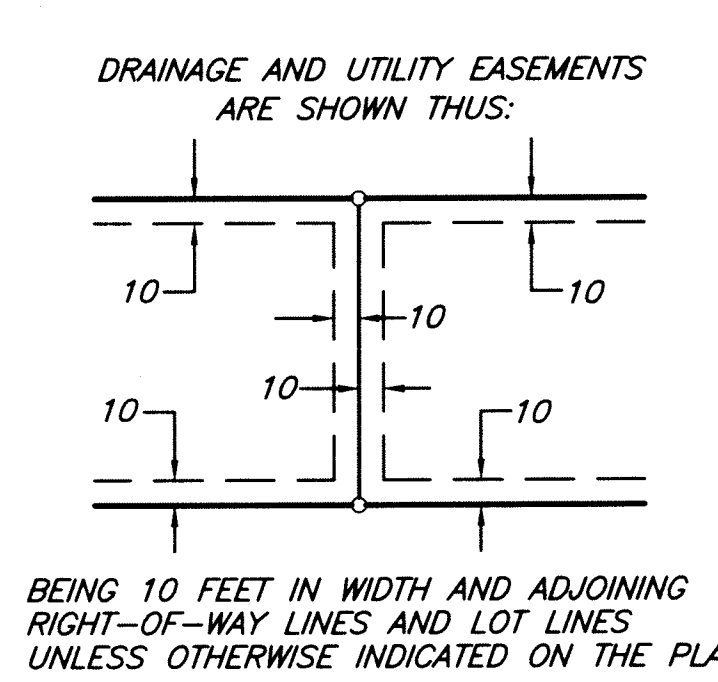
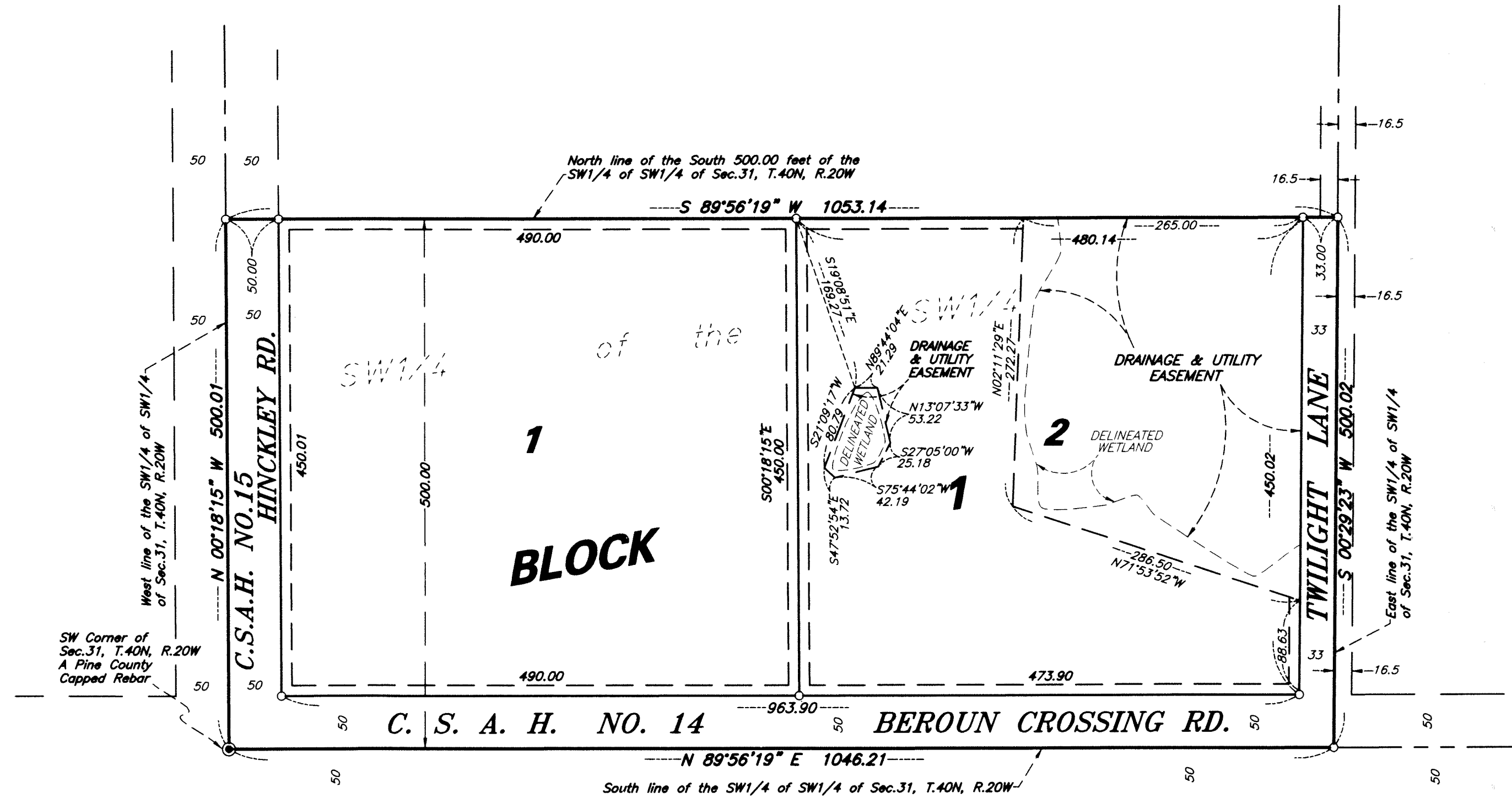
Jay Suzanne Reuter
Pine County Auditor

Taxes for the year of 2007 on the lands described herein are paid.

Ann A. Blahut
Pine County Treasurer

I hereby certify that this instrument was filed in the office of the County Recorder for record on this 18th day of October, 2007 at 4 o'clock P.M. and was duly recorded as Document No. 468268

Jessica Kalk, Deputy
County Recorder, Pine County, Minnesota.



SNAKE RIVER
LAND PLANNING & SURVEY, INC.
SANDSTONE, MINNESOTA