

" COPY "

LINMARK 1 ST. ADDITION

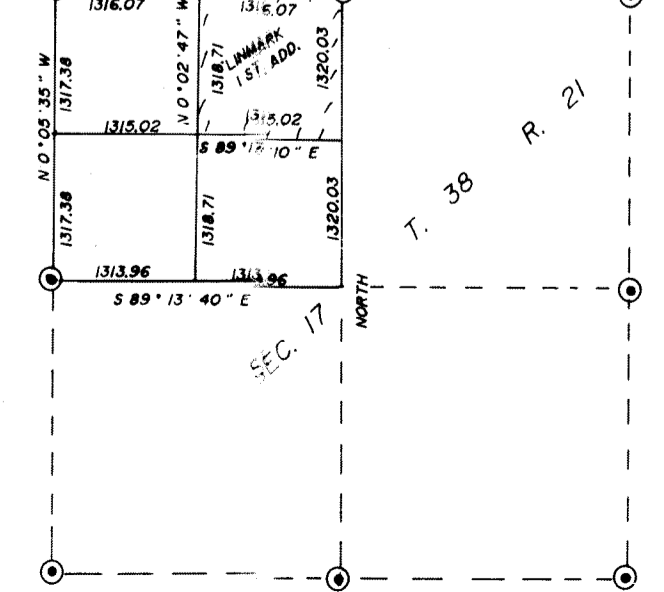
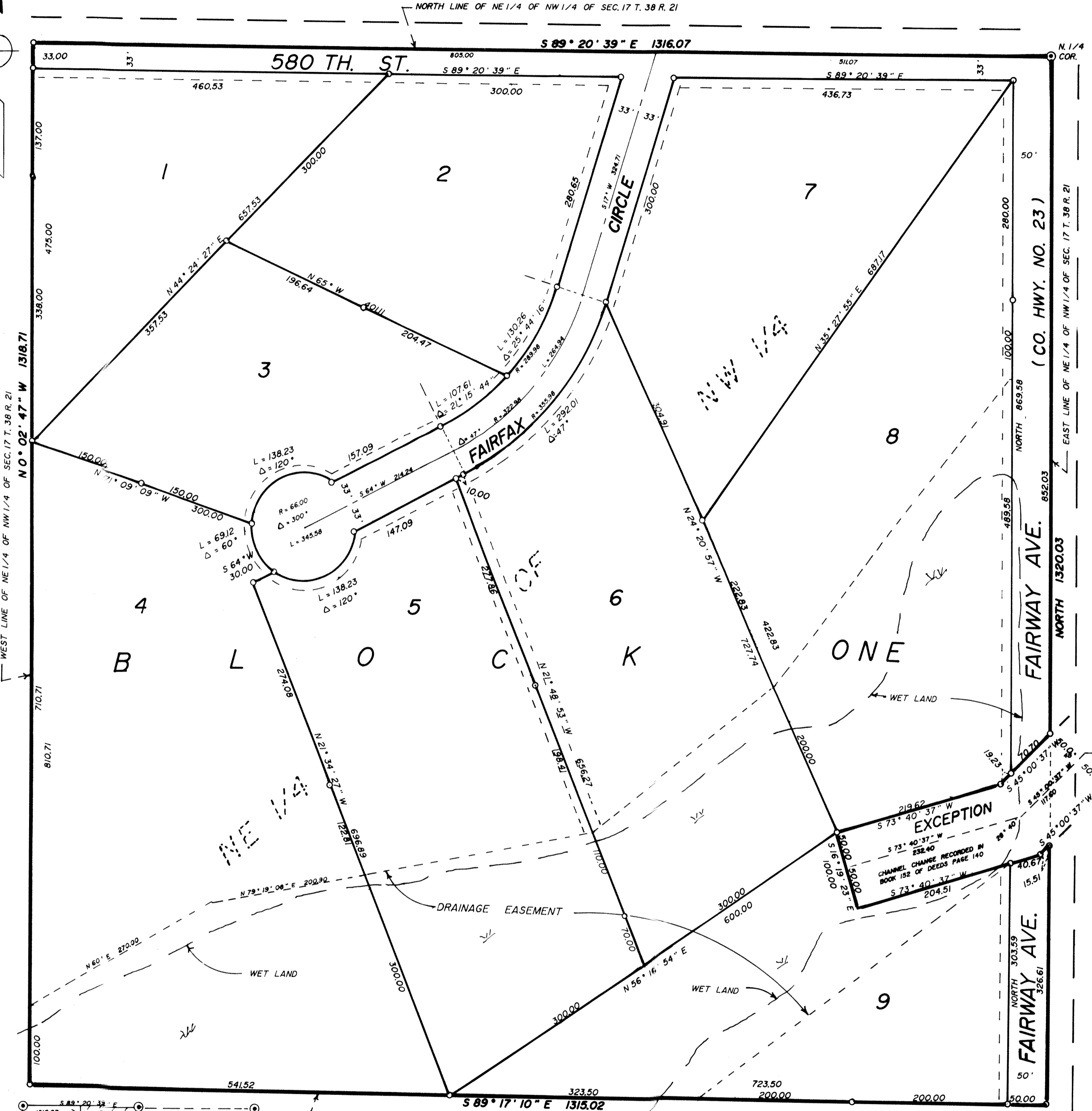
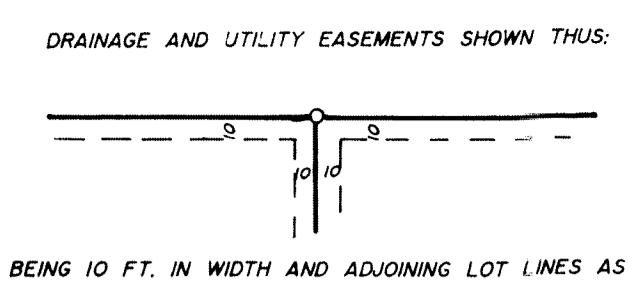
THE EAST LINE OF NE 1/4 OF NW 1/4 OF SEC. 17 T. 38 R. 21 IS ASSUMED A BEARING OF NORTH

○ DENOTES RECORDED PINE COUNTY LAND CORNER MONUMENT

○ DENOTES SET 1/2 INCH IRON PIPE WITH PLASTIC CAP MARKED R. L. S. NO. 8195

SCALE IN FEET

0 25 50 75 100 200 300 400



NOTE: The Minnesota Department of Natural Resources, United States Corps of Engineers and other water management agencies have categorized various wetlands, which are not acknowledged by Chapter 505.02, Subdivision 1 of the Minnesota Statutes and may not be shown hereon. Development of lands containing said wetlands may be subject to special conditions of limitations.

KNOW ALL MEN BY THESE PRESENTS: That Mark Haug Construction, Inc., a Minnesota corporation, owner and proprietor of the following described property situated in the City of Rock Creek, Pine County, Minnesota:

The Northeast Quarter of the Northwest Quarter of Section 17, Township 38, Range 21, Pine County, Minnesota,

Except that part acquired for channel change recorded in Book 152 of Deeds, page 140. Has caused the same to be surveyed and platted as LINMARK 1ST ADDITION in Rock Creek, Minnesota, and does hereby donate and dedicate to the public for public use forever 580th Street, Fairway Avenue and Fairfax Avenue, and also dedicates the easements as shown on this plat for drainage and utility purposes only.

In witness whereof, said Mark Haug Construction, Inc., a Minnesota corporation, has caused these presents to be signed by its proper officer this 24th day of July, 1996.

Mark J. Haug
Mark J. Haug, President

STATE OF MINNESOTA)
COUNTY OF Pine) SS

The foregoing instrument by Mark J. Haug, President of Mark Haug Construction, Inc., a Minnesota corporation, on behalf of the corporation, was acknowledged before me this 24th day of July, 1996.

Linda Haug
Notary Public - Minnesota
My Comm. Exp. Jan. 31, 2000

Linda Haug
Notary Public, Pine County, Minnesota
My Commission Expires August 11, 2000
Jan. 31, 2000

Linda Haug
Notary Public - Minnesota
My Comm. Exp. Aug. 11, 2000

I, M. B. Rude, hereby certify that I have surveyed and platted the property described on this plat as LINMARK 1ST ADDITION, that this plat is a correct representation of the survey, that all distances are correctly shown on the plat in feet and hundredths of a foot, that all monuments have been correctly placed in the ground as shown, that the outside boundary lines are correctly designated on the plat and that there are no wet lands as defined in MS505.02, Subdivision 1, or public highways to be designated other than as shown.

M. B. Rude
M. B. Rude
Land Surveyor
Minnesota Registered License No. 8195

STATE OF MINNESOTA)
COUNTY OF PINE) SS

The foregoing Surveyor's Certificate by M. B. Rude, Minnesota Registered License No. 8195, was acknowledged before me this 22nd day of July, 1996.

Rosemarie Rude
Notary Public, Pine County, Minnesota
My Commission Expires January 31, 2000

Approved by the City Council of Rock Creek, Minnesota, this 5 day of August, 1996, and is in compliance with the provision of Chapter 505.03, Subdivision 2, Minnesota Statutes.

Richard M. Olson
Mayor

Shirley K. Shoberg
Clerk

This plat was approved as to form and execution this 5th day of August, 1996.

Barry E. Berglund
City Attorney

No delinquent taxes and transfer entered this 3rd day of June, 1997.

Lawrence D. Percault
County Auditor

I hereby certify that the taxes for the year 1997 on the property described herein are paid this 3rd day of June, 1997.

Grace A. Blabie
County Treasurer

Document No. 363048

I hereby certify that this instrument was filed in the Office of the County Recorder for record on this 3rd day of June, 1997, at 2 o'clock P. M., and was duly recorded in Pine County Records.

Eric Larson Tich
County Recorder