

MAPLE SHORES 2ND. ADD.

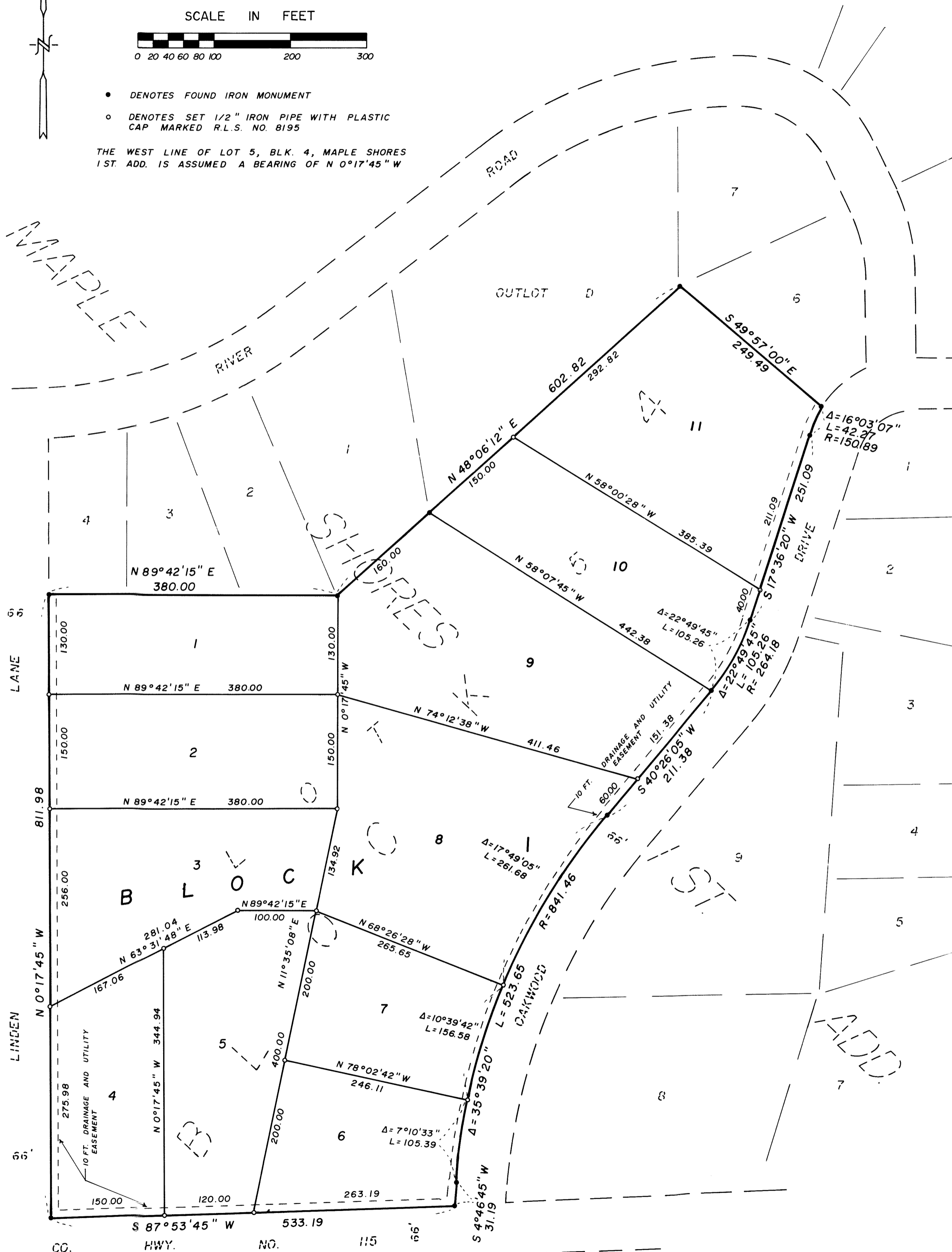
" OFFICIAL PLAT "

SCALE IN FEET



- DENOTES FOUND IRON MONUMENT
- DENOTES SET 1/2" IRON PIPE WITH PLASTIC CAP MARKED R.L.S. NO. 8195

THE WEST LINE OF LOT 5, BLK. 4, MAPLE SHORES 1ST. ADD. IS ASSUMED A BEARING OF N 0°17'45" W



KNOW ALL MEN BY THESE PRESENTS: That Danford W. Erhart and Kathleen Ann Erhart, husband and wife, owners and proprietors, of the following described property situated in the County of Pine, State of Minnesota, to-wit:

Lot 5, Block 4, MAPLES SHORES 1ST ADDITION, Pine County, Minnesota.

have caused the same to be surveyed and platted as MAPLES SHORES 2ND ADDITION in Royalton Township, and do hereby donate and dedicate to the public for public use forever the easements as shown on this plat for drainage and utility purposes only.

In witness whereof, said Danford W. Erhart and Kathleen Ann Erhart, husband and wife, have hereunto set their hands this 1st day of December, 19 89.

Danford W. Erhart
Danford W. Erhart

Kathleen Ann Erhart
Kathleen Ann Erhart

STATE OF MINNESOTA)
COUNTY OF Pine) ss

The foregoing instrument by Danford W. Erhart and Kathleen Ann Erhart was acknowledged before me this 1st day of December, 19 89.

Rosemarie Rude
Notary Public, Pine County, Minnesota
My Commission Expires September 22, 1992

I, M. B. Rude, hereby certify that I have surveyed and platted the property described on this plat as MAPLES SHORES 2ND ADDITION; that this plat is a correct representation of the survey; that all distances are correctly shown in feet and hundredths of a foot; that all monuments have been correctly placed in the ground as shown; that the outside boundary lines are correctly designated on the plat and that there are now wet lands or public highways to be designated other than as shown.

M. B. Rude
M. B. Rude
Minnesota Licensed Land Surveyor No. 8195

STATE OF MINNESOTA)
COUNTY OF PINE) ss

The foregoing Surveyor's Certificate by M. B. Rude, Minnesota License No. 8195, was acknowledged before me this 20th day of November, 19 89.

Rosemarie Rude
Notary Public, Pine County, Minnesota
My Commission Expires September 22, 1992

Approved by the Board of County Commissioners, Pine County, Minnesota, this 5th day of December, 19 89, and is in compliance with the provision of Chapter 505.03, SUBDIVISION 2, Minnesota Statutes.

Eileen J. Anderson
Board Chairman

Lawrence D. Percault
County Auditor

This plat was approved as to form and execution this 5 day of December, 19 89.

John K. Carlson
Pine County Attorney

No delinquent taxes and transfer entered this 5th day of December, 19 89.

Lawrence D. Percault
Pine County Auditor

I hereby certify that the taxes for the year 19 89 on the property described herein are paid this 6th day of December, 19 89.

Paul A. Blahie
Pine County Treasurer

DOCUMENT NUMBER 313/51

I hereby certify that this instrument was filed in the Office of the County Recorder for record this 18th day of December, 19 89, at 9 o'clock A. M., and was duly recorded in Pine County Records.

Deanne Lusk
Pine County Recorder