

MURPHY'S RIVER BEND FIRST ADDITION

CHENGWATANA TOWNSHIP, PINE COUNTY

KNOW ALL PERSONS BY THESE PRESENTS that Ronald P. Murphy and Elvira Joyce Murphy, husband and wife, fee owners, ^{AND} Taylor Investment Corp., Inc., a Minnesota corporation, contract purchasers, of the following described property situated in the County of Pine and the State of Minnesota:

Outlot B, Murphy's River Bend

Have caused the same to be surveyed and platted as MURPHY'S RIVER BEND FIRST ADDITION and do hereby donate and dedicate to the public for the public use forever the lane and circles and utility and drainage easements as shown on the plat.

In witness whereof said Ronald P. Murphy and Elvira Joyce Murphy, husband and wife, have caused these presents to be signed this 15th day of SEPTEMBER, 1988. In witness whereof said Taylor Investment Corp., Inc., a Minnesota corporation, has caused these presents to be signed by its proper officers this 20th day of December, 1988.

Ronald P. Murphy
Ronald P. Murphy

Elvira Joyce Murphy
Elvira Joyce Murphy

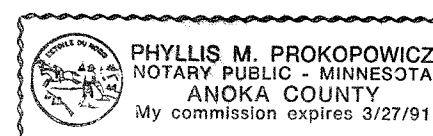
TAYLOR INVESTMENT CORP., INC.

Charles G. Anderson
Charles G. Anderson, Assistant Secretary

State of Minnesota
County of ANOKA

The foregoing instrument was acknowledged before me this 15th day of SEPTEMBER, 1988, by Ronald P. Murphy and Elvira Joyce Murphy, husband and wife.

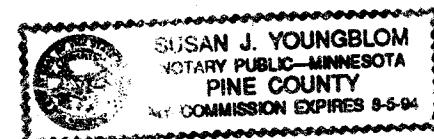
Phyllis M. Prokopowicz
Notary Public, Anoka County, Minnesota
My Commission Expires March 27, 1991



State of Minnesota
County of Pine

The foregoing instrument was acknowledged before me this 20th day of December, 1988, for Taylor Investment Corp., Inc., a Minnesota corporation, by Charles G. Anderson, Assistant Secretary, on behalf of the corporation.

Susan J. Youngblom
Notary Public, Pine County, Minnesota
My Commission Expires August 5, 1994



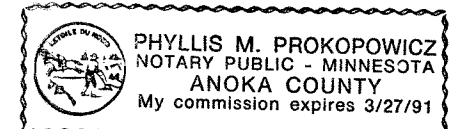
I, Ron Murphy, hereby certify that I have surveyed and platted the property described in the dedication of this plat as MURPHY'S RIVER BEND FIRST ADDITION, that this plat is a correct representation of the survey; that the distances are correctly shown on the plat; that all monuments have been correctly placed in the ground as shown; that the outside boundary lines are correctly designated on the plat; and that there are no wetlands, easements or public highways to be designated on said plat other than as shown thereon.

Ron Murphy
Ron Murphy, Minnesota Registered Land Surveyor
License No. 10832

State of Minnesota
County of Anoka

The foregoing instrument was acknowledged before me this 15th day of SEPTEMBER, 1988, by Ron Murphy, Land Surveyor Number 10832.

Phyllis M. Prokopowicz
Notary Public, Anoka County, Minnesota
My Commission Expires March 27, 1991



I hereby certify that the taxes for the year 87 and all prior years on the property described herein are paid.

Lawrence D. Bercault
County Auditor, Pine County, Minnesota

I hereby certify that the taxes for the year 1988 on the property described herein are paid.

Ernest A. Bladwin
County Treasurer, Pine County, Minnesota

The plat of MURPHY'S RIVER BEND FIRST ADDITION was accepted and approved by the County Board of Pine County, Minnesota, at a regular meeting thereof held this 20th day of December, 1988.

Ernest A. Bladwin Chairman
Lawrence D. Bercault Auditor

This plat was approved as to form and execution on this 30 day of December, 1988.

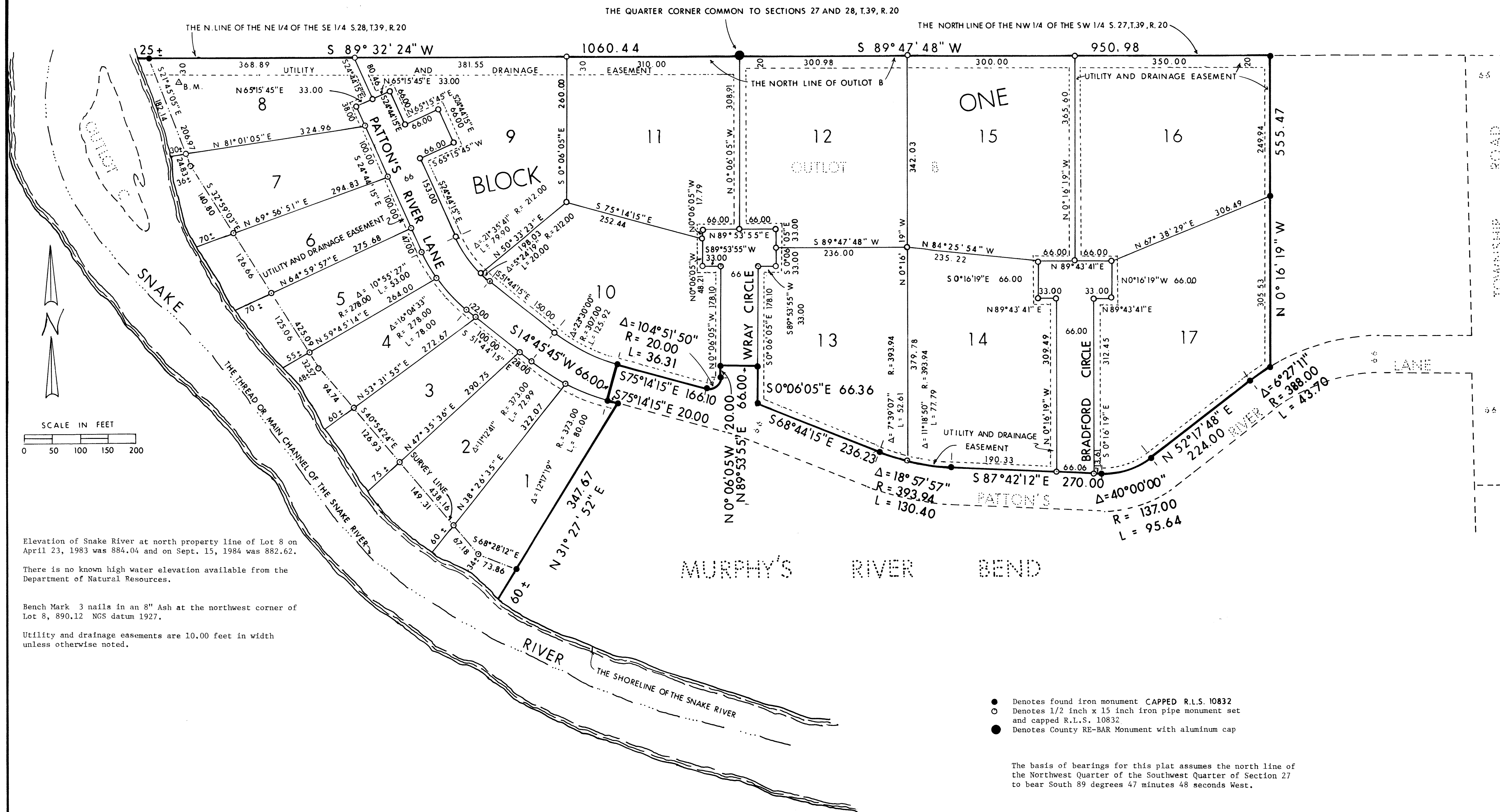
John K. Carlson
County Attorney, Pine County, Minnesota

I hereby certify that the plat of MURPHY'S RIVER BEND FIRST ADDITION was filed in this office on this 30th day of December, 1988, at 10:10 o'clock A.M. Micro Number 307836

Thomas J. Swickard
County Recorder, Pine County, Minnesota

MURPHY'S RIVER BEND FIRST ADDITION

CHENGWATANA TOWNSHIP, PINE COUNTY



Elevation of Snake River at north property line of Lot 8 on April 23, 1983 was 884.04 and on Sept. 15, 1984 was 882.62.

There is no known high water elevation available from the Department of Natural Resources.

Bench Mark 3 nails in an 8" Ash at the northwest corner of Lot 8, 890.12 NGS datum 1927.

Utility and drainage easements are 10.00 feet in width unless otherwise noted.

- Denotes found iron monument CAPPED R.L.S. 10832
- Denotes 1/2 inch x 15 inch iron pipe monument set and capped R.L.S. 10832
- Denotes County RE-BAR Monument with aluminum cap

The basis of bearings for this plat assumes the north line of the Northwest Quarter of the Southwest Quarter of Section 27 to bear South 89 degrees 47 minutes 48 seconds West.