

PLAT DEDICATION

KNOW ALL MEN BY THESE PRESENTS:- That Clifford A. Hauberg and Marguerite E. Hauberg, husband and wife, being the owners of the following described property lying and being in Government Lots 1 and 2 of Section Ten (10), Township Forty-five (45) North, Range Nineteen (19) West of the Fourth Principal Meridian and more particularly described as follows, to-wit: Commencing at the Northwest corner of Government Lot 2 of said Section 10, thence bearing North 89° 42' 35" East on the North line thereof a distance of 1,209.28' to a point, thence bearing South 0° 32' 43" East a distance of 1,000.01', thence bearing North 89° 42' 35" East a distance of 1,176.63' to the point of beginning of the tract to be herein described, thence bearing South 89° 42' 35" West a distance of 1,176.63', thence bearing North 0° 32' 43" West a distance of 567.01', thence bearing South 89° 42' 35" West a distance of 725.93', thence bearing South 14° 51' 56" East a distance of 273.26', thence bearing South 0° 53' 56" East a distance of 186.77', thence bearing South 47° 17' 41" East a distance of 758.52', thence bearing South 36° 20' East a distance of 324.32', more or less, to the shore of Sturgeon Lake, thence in a general Easterly and Southeasterly direction on said shoreline a distance of 1,250', more or less, to a point which bears South 1° 05' 26" East from the point of beginning, thence bearing North 1° 05' 26" West a distance of 663.57', more or less, to the point of beginning; except that part described as follows: Commencing at the Northwest corner of said Government Lot 2, thence bearing North 89° 42' 35" East on the North line thereof a distance of 1,209.28', thence bearing South 0° 32' 43" East a distance of 433.0', thence bearing South 89° 42' 35" West a distance of 76.0', thence bearing South 0° 32' 43" East a distance of 66' to the point of beginning, thence continuing on this same straight line a distance of 496.0', thence bearing South 89° 42' 35" West a distance of 158.08', thence bearing North 0° 32' 43" West a distance of 230.0', thence bearing South 89° 42' 35" West a distance of 140.0', thence bearing North 0° 32' 43" West a distance of 266.0', thence bearing North 89° 42' 35" East a distance of 298.08' to the point of beginning; and an additional tract of land designated Outlot B described as follows: Commencing at the Northwest corner of said Government Lot 2, thence bearing North 89° 42' 35" East on the North line thereof a distance of 1,209.28', thence bearing South 0° 32' 43" East a distance of 433.0', thence bearing South 89° 42' 35" West a distance of 725.93', thence bearing South 14° 51' 56" East a distance of 273.26', thence bearing South 0° 53' 56" East a distance of 186.77', thence bearing South 47° 17' 41" East a distance of 758.52', thence bearing South 36° 20' East a distance of 324.32', more or less, to the point of beginning of the tract to be herein described, thence bearing South 47° 17' 41" East a distance of 252.90', thence bearing South 42° 19' West a distance of 66.0' to the point of beginning of the tract to be herein described, thence bearing South 47° 17' 41" East a distance of 60.0', thence bearing South 45° 27' 19" West a distance of 343.47', more or less, to the shore of Sturgeon Lake, thence in a Northwesterly direction on said shoreline a distance of 60', more or less, to a point which bears South 45° 27' 19" West from the point of beginning, thence bearing North 45° 27' 19" East a distance of 355.59', more or less, to the point of beginning; being desirous of platting the same into a Block of Lots and Outlot have caused the same to be surveyed and the annexed plat to be made in accordance with the statutes in such cases made and provided. Now therefore we do ratify and confirm, in all respects, said survey and plat thereof as "NORTH STAR", and sign, seal and execute said plat, and hereby dedicate to public use the Streets delineated thereon.

IN WITNESS WHEREOF:- We hereunto set our hands and seals this 29th day of October, A.D., 1980.
Clifford A. Hauberg
Marguerite E. Hauberg
STATE OF MINNESOTA)
COUNTY OF CARLTON) SS
On this 29th day of October, A.D., 1980, personally appeared before me the above signed owners, to me well known to be the persons described in and who executed the foregoing certificate and acknowledged the same as their free act and deed.

STATE OF MINNESOTA)
COUNTY OF CARLTON) SS
I, Neubert W. Swanson, hereby certify that I am a Registered Land Surveyor, in the State of Minnesota, and that I have, at the request of the proprietors thereof, made a careful survey of the property described in the foregoing certificate of proprietors and have platted the same into a Block of Lots and Outlot, as more fully appears on the annexed plat entitled "NORTH STAR". The plat is a correct representation of the field survey, all distances are correctly shown on the plat in feet and decimals of feet, monuments for the guidance of future surveys have been correctly placed in the ground as shown, the outside boundary lines are correctly designated, there are no wet lands, rivers, streams, creeks, lakes, public highways or thoroughfares laid out, opened or traveled existing before the plat other than shown on the plat.
Neubert W. Swanson
Registered Land Surveyor No. 5709

Approved as to form and execution this 29th day of October, 1980.
Gladys E. Swanson
Notary Public, Carlton County, Minnesota
My commission expires November 2, 1983

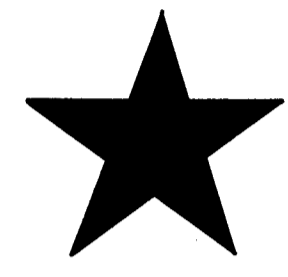
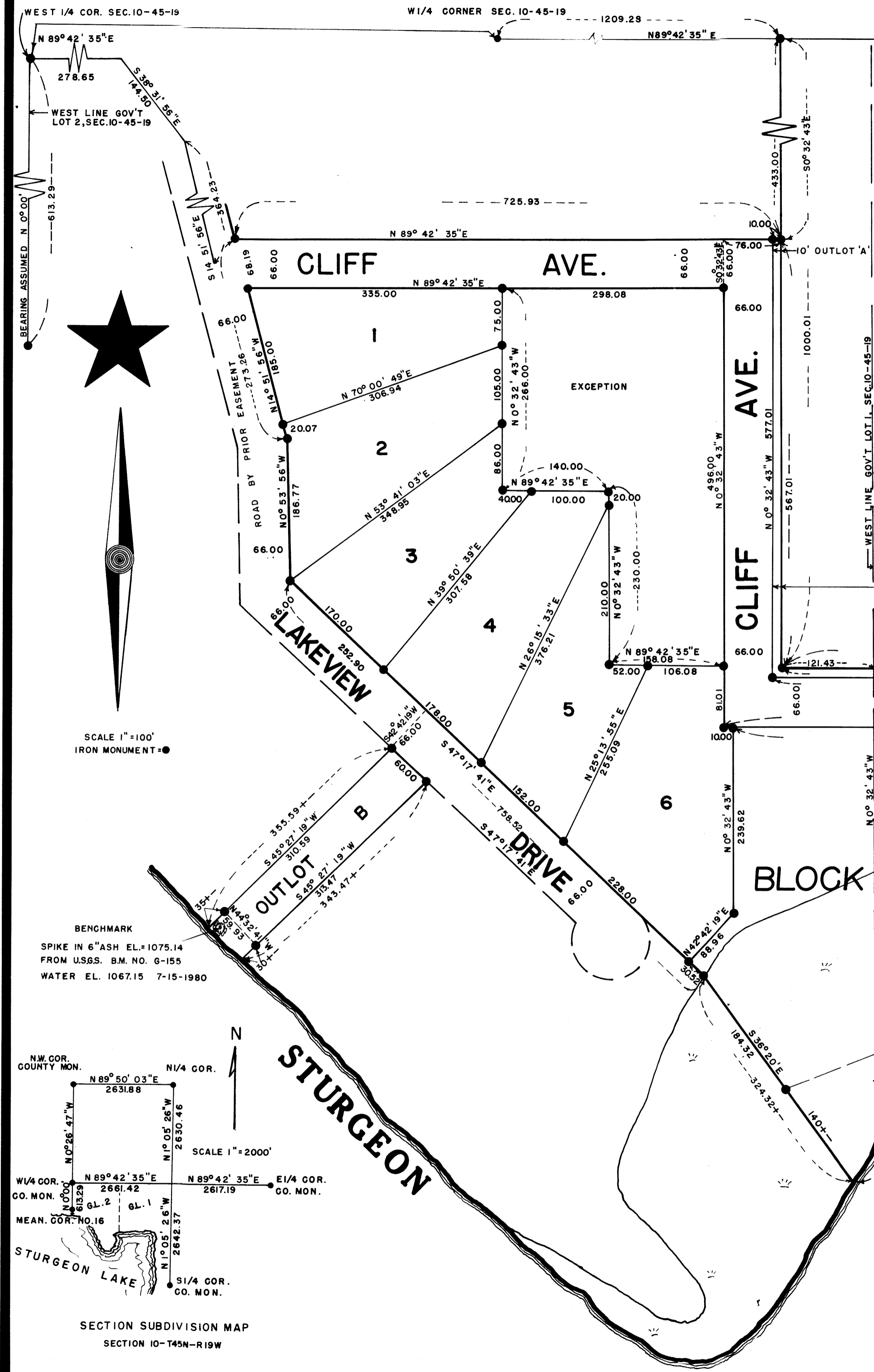
Approved as to form and execution this 19 day of November, 1980.
Thomas Ryan
Pine County Attorney

We hereby certify that the annexed plat was approved and accepted at a Regular meeting of the Board of County Commissioners of Pine County, Minnesota this 18 day of November, A.D., 1980.
James Youngbauer
Chairman, Pine County Board
Lawrence D. Durault
Auditor

I hereby certify that the taxes for the year 1980 on the property described herein are paid.
Raymond A. Schultz
County Treasurer, Pine County, Minnesota

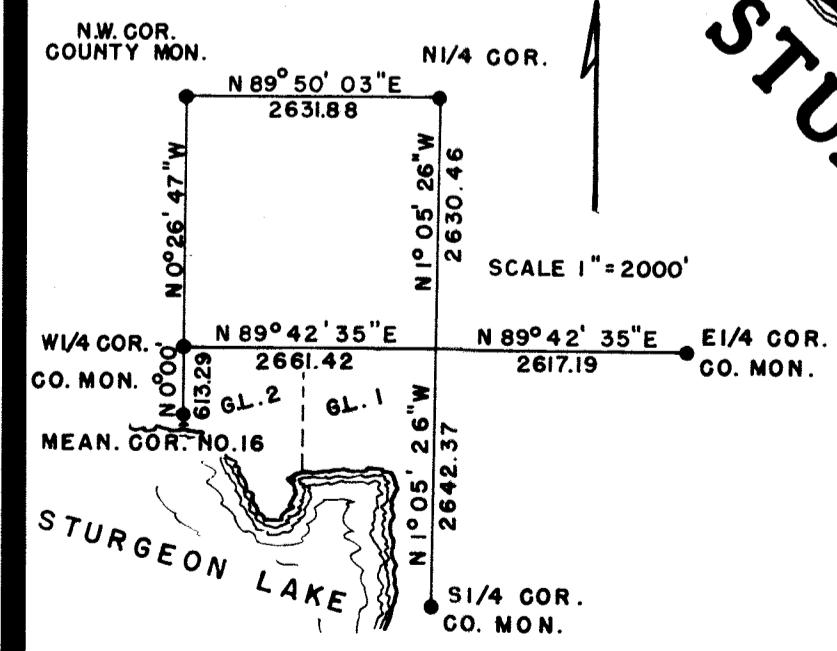
I hereby certify that the taxes for all prior years on the property described herein are paid.
Lawrence D. Durault
County Auditor, Pine County, Minnesota

I hereby certify that the plat of "NORTH STAR" was filed in this office on the 19 day of November, A.D., 1980, at 9 o'clock A.M., Micro Number 266239.
Avin Bible
County Recorder, Pine County, Minnesota



SCALE 1" = 100'
IRON MONUMENT

BENCHMARK
SPIKE IN 6" ASH EL. 1075.14
FROM U.S.S. B.M. NO. G-155
WATER EL. 1067.15 7-15-1980



SECTION SUBDIVISION MAP
SECTION 10-T45N-R19W

NORTH STAR

CARLTON COUNTY