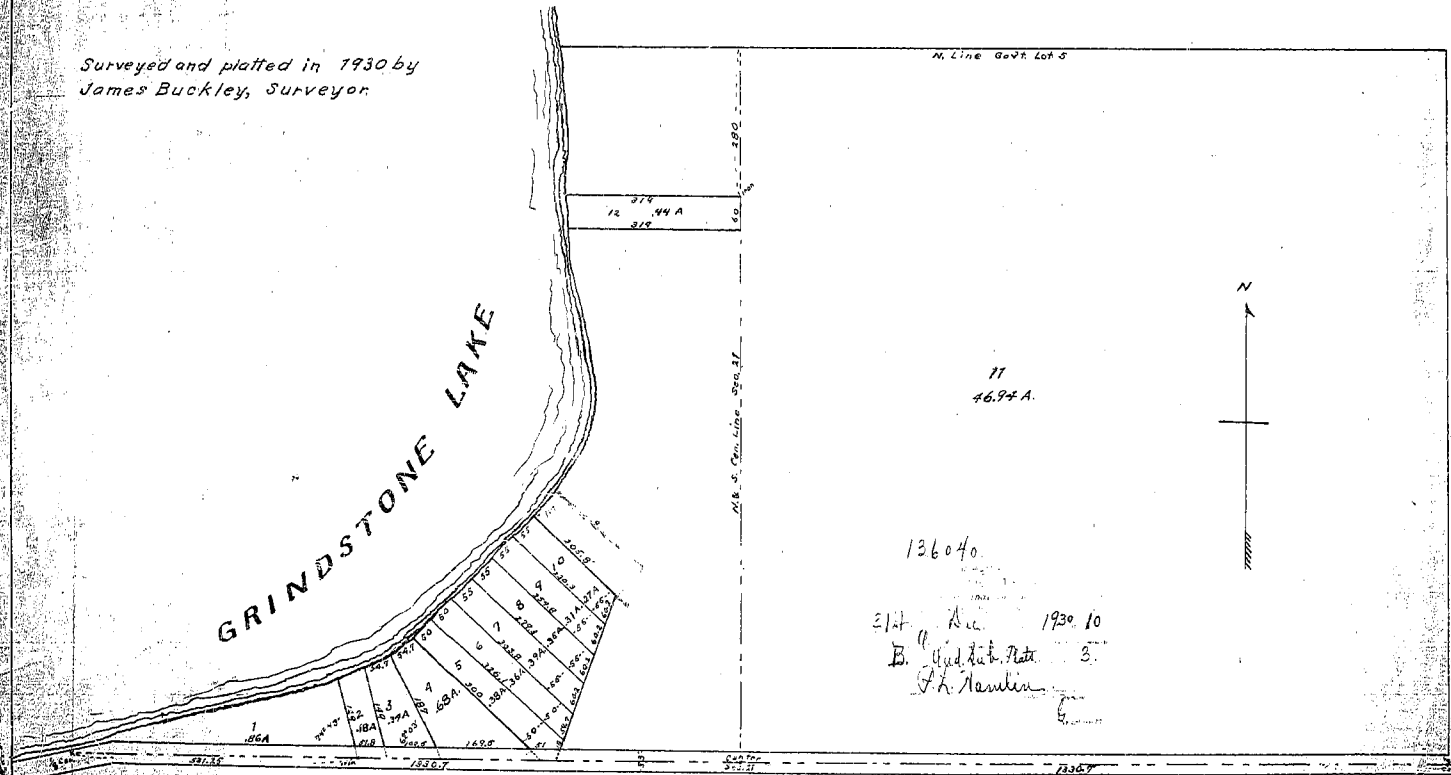


**REARRANGEMENT OF AUDITOR'S SUBDIVISION
OF LOT 5 SEC. 21 T. 42 N. R. 21 W. PINE COUNTY, MINN.**

Scale - 150 ft. = 1 in.

Surveyed and platted in 1930 by
James Buckley, Surveyor

GRINDSTONE LAKE



11
46.97 A.

136040

21st Dec 1930 10
B. Auditor's Plat. 3.
J. H. Hamilton