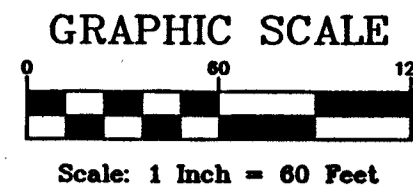


# ROGER TRAPP SHORES

PART OF GOVERNMENT LOT 4, SECTION 9, TOWNSHIP 42 NORTH,  
RANGE 21 WEST, 4TH PRINCIPAL MERIDIAN, PINE COUNTY, MINNESOTA

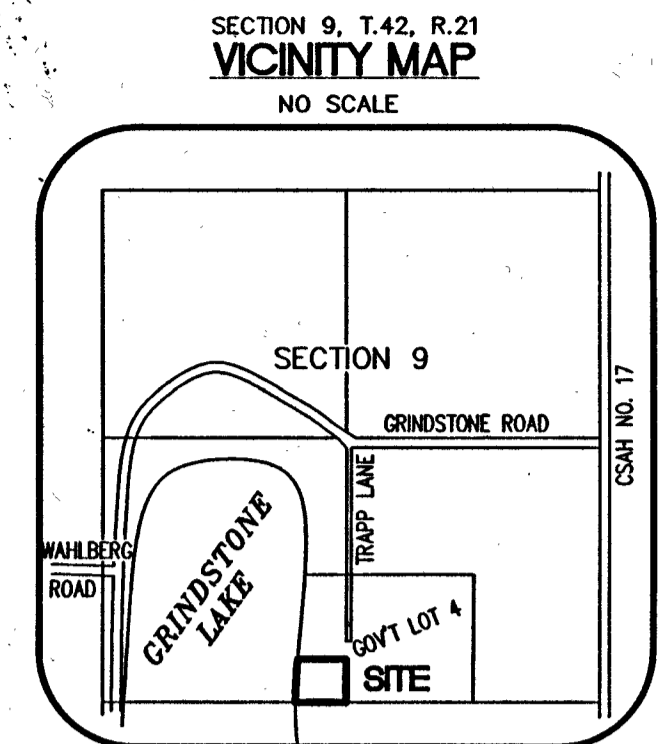
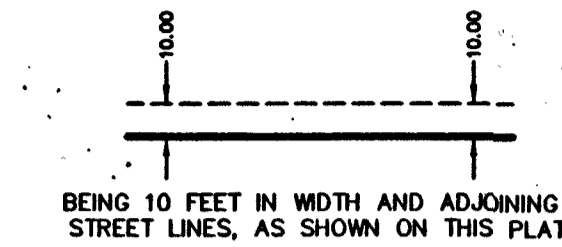
DELL GROVE TOWNSHIP  
PINE COUNTY, MN

- LEGEND**
- DENOTES RECORDED PINE COUNTY LAND SURVEY MONUMENT
  - DENOTES 1/2" IRON PIPE FOUND MARKED KROSCHSEL 44490
  - DENOTES 1/2" IRON PIPE FOUND MARKED RLS 25344
  - DENOTES 1/2" x 14" IRON REBAR SET, MARKED KROSCHSEL 44490



THE BASIS OF BEARINGS FOR THIS DRAWING IS  
THE MNDOT PINE COUNTY COORDINATE SYSTEM,  
NAD 1983, HARN 1996 ADJUSTMENT

DRAINAGE AND UTILITY EASEMENTS ARE SHOWN THUS:



**Benchmark:**

Top of Iron Pipe with plastic cap marked  
KROSCHSEL 44490 on north line of Lot 1, Block 1.  
Elevation: 1117.8 feet (NAVD 88)

KNOW ALL MEN BY THESE PRESENTS: That Ruby J. Trapp, Trustee of the Ruby AEM Trapp Revocable Living Trust dated June 3, 2019, fee owner of the following described property situated in the County of Pine, State of Minnesota, to wit:

That part of Government Lot 4, Section 9, Township 42, Range 21, Pine County, Minnesota, described as follows:

Beginning at the South Quarter corner of said Section 9; thence easterly along the south line of said Government Lot 4 a distance of 25.00 feet; thence northerly, deflecting to the left 89 degrees 13 minutes 13 seconds a distance of 325.0 feet, said line to be hereinafter referred to as line "A"; thence westerly, deflecting to the left 90 degrees a distance of 472 feet, more or less to the shore line of Grindstone Lake; thence southerly along said shore line to the intersection with the south line of said Government Lot 4; thence easterly along said south line to the point of beginning.

has caused the same to be surveyed and platted as ROGER TRAPP SHORES and do hereby dedicate to the public for public use forever TRAPP LANE as shown on this plat. Also dedicating to the public for public use, forever the easements as shown on this plat for drainage & utility purposes only.

In witness whereof said Ruby J. Trapp, Trustee of the Ruby AEM Trapp Revocable Living Trust dated June 3, 2019, has hereunto set her hand this 17<sup>th</sup> day of December, 20 19.

*Ruby J. Trapp, trustee of the Ruby (AEM) Trapp Revocable Living Trust*  
Ruby J. Trapp, Trustee of the  
Ruby AEM Trapp Revocable Living Trust  
dated June 3, 2019

STATE OF MINNESOTA )  
COUNTY OF Pine )

The foregoing instrument by Ruby J. Trapp, Trustee of the Ruby AEM Trapp Revocable Living Trust dated June 3, 2019, was acknowledged before me this 17<sup>th</sup> day of December, 20 19.

*Susan E. Jan Jordan*  
Notary Public, Pine County, Minnesota  
My Commission Expires January 31, 2024

I, Tyler Kroschel, do hereby certify: that this plat was prepared by me or under my direct supervision; and that I am a duly licensed land surveyor in the State of Minnesota; and that I have surveyed and platted the land described on this plat as ROGER TRAPP SHORES and that this plat is a correct representation of the boundary survey; that all mathematical data and labels are correctly designated on the plat; that all monuments of the plat have been correctly set; that as of the date of this certificate, all water boundaries and wet lands, as defined in Minnesota Statutes Section 505.01, Subd. 3, are shown and labeled on the plat; and that all public ways are shown and labeled on the plat.

*Tyler J. Kroschel*  
Tyler J. Kroschel, Land Surveyor  
Minnesota License No. 44490  
Dated this 20<sup>th</sup> day of December, 20 19.

STATE OF MINNESOTA )  
COUNTY OF Pine )

The foregoing Surveyor's Certificate was acknowledged before me this 20<sup>th</sup> day of December, 20 19, by Tyler J. Kroschel, Land Surveyor, Minnesota License No. 44490.

*Cary R. Wimmer*  
Notary Public, Pine County, Minnesota  
My Commission Expires January 31, 2021

Pursuant to MN Statutes, Section 505.021 Subd. 9(b), approved by the Board of Supervisors of the Township of Dell Grove, Pine County, Minnesota this 17<sup>th</sup> day of December, 20 19, and is in compliance with the provisions of Section 505.03, Subd. 2.

*Daniel Palaniga* Board Chairman  
*Janet Foss* Clerk

Pursuant to MN Statutes, Section 505.021 Subd. 9(b), approved by the Board of County Commissioners, Pine County, Minnesota this 3<sup>rd</sup> day of December, 20 19, and is in compliance with the provisions of Section 505.03, Subdivision 2, Minnesota Statutes.

*John Munn* Board Chairman  
*David J. Munn* Clerk

This plat was approved as to form and execution this 3<sup>rd</sup> day of December, 20 19.

*Paula Fredrickson*  
County Attorney

Pursuant to Minnesota Statutes, Section 272.12 and Section 505.021, Subd. 9(d), no delinquent taxes for the land described on this plat and transfer entered this 5<sup>th</sup> day of December, 20 19.

*James Paul*  
County Auditor

Pursuant to Minnesota Statutes, Section 505.021 Subd. 9(d), I hereby certify that the taxes for the year 20 19 on the property described herein are paid this 5<sup>th</sup> day of December, 20 19.

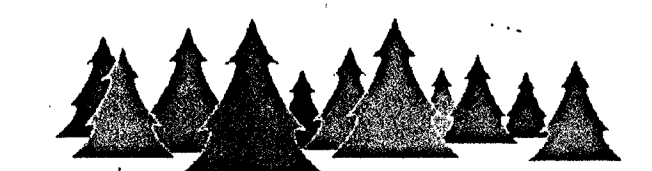
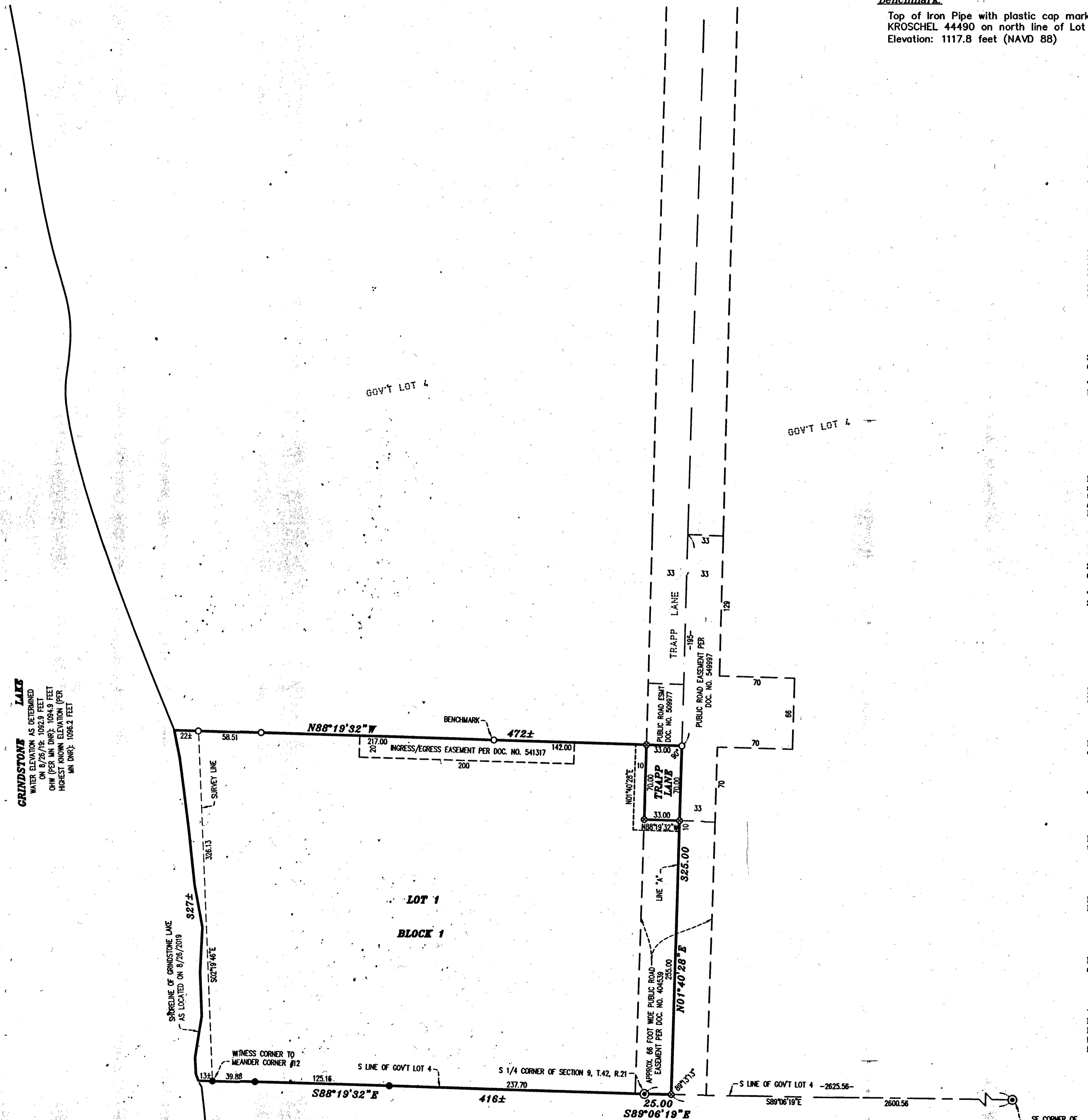
*Katharina*  
County Treasurer

Pursuant to MN Statutes, Section 505.021 Subd. 9(c) and Section 505.021 Subd. 11, I hereby certify that this plat has been reviewed and approved by the Pine County Surveyor, Pine County, Minnesota, this 5<sup>th</sup> day of December, 20 19.

*NT-14*  
County Surveyor

Document No. 550303  
Pursuant to Minnesota Statutes, Section 505.04 and Section 505.021 Subd. 9(e), I hereby certify that this instrument was filed for record in the Office of the County Recorder for record on this 5<sup>th</sup> day of December, 20 19, at 12:40 o'clock P.M. and was duly recorded in Pine County Records.

*Levi Holtzman*  
County Recorder



Kroschel Land Surveyors, Inc.  
1639 Main Street North, Suite 6, Pine City, MN 55063  
Phone: 320-629-3267 tyler@kroschelsurvey.com