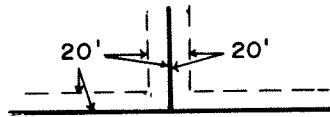


SPORTSMAN'S RETREAT

" OFFICIAL PLAT "

DRAINAGE AND UTILITY EASEMENTS SHOWN THUS



BEING 20' IN WIDTH AND ADJOINING LOT LINES AS SHOWN HEREON.

SCALE -- 1 INCH = 200 FEET

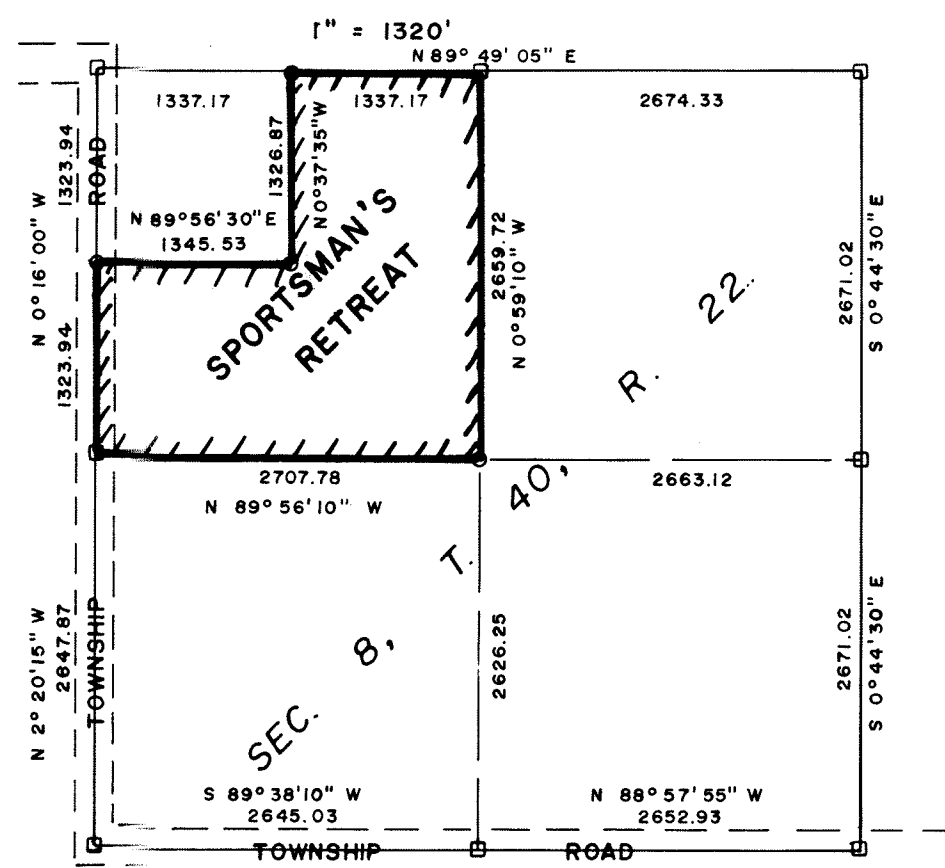


O DENOTES 1/2" IRON PIPE MARKED R.L.S. 8195.

D DENOTES PINE COUNTY LAND CORNER MONUMENT.

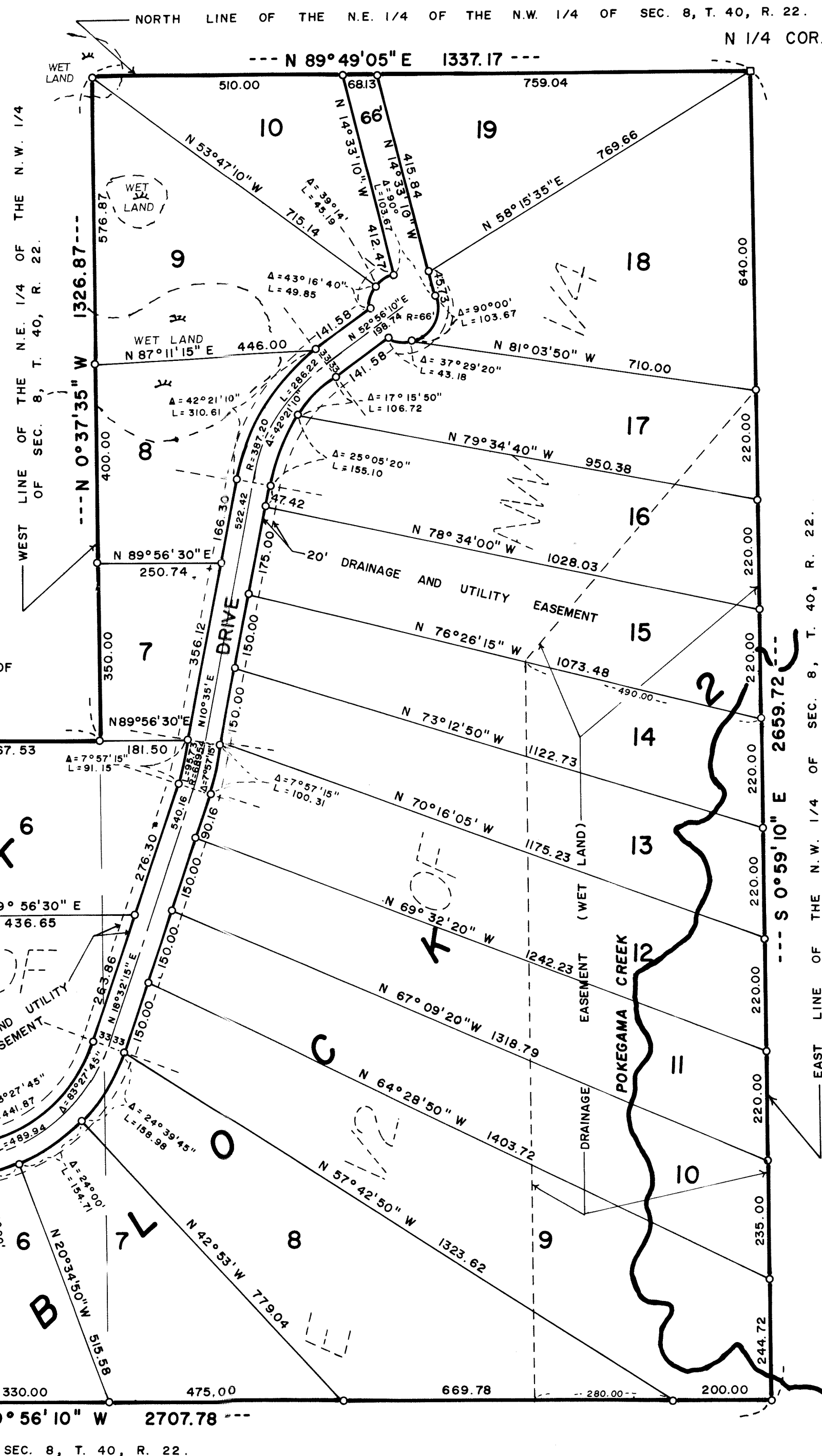
THE WEST LINE OF THE S.W. 1/4 OF THE N.W. 1/4 OF SEC. 8, T. 40, R. 22 IS ASSUMED TO HAVE A BEARING OF N 0° 16' 00" W.

SITE MAP

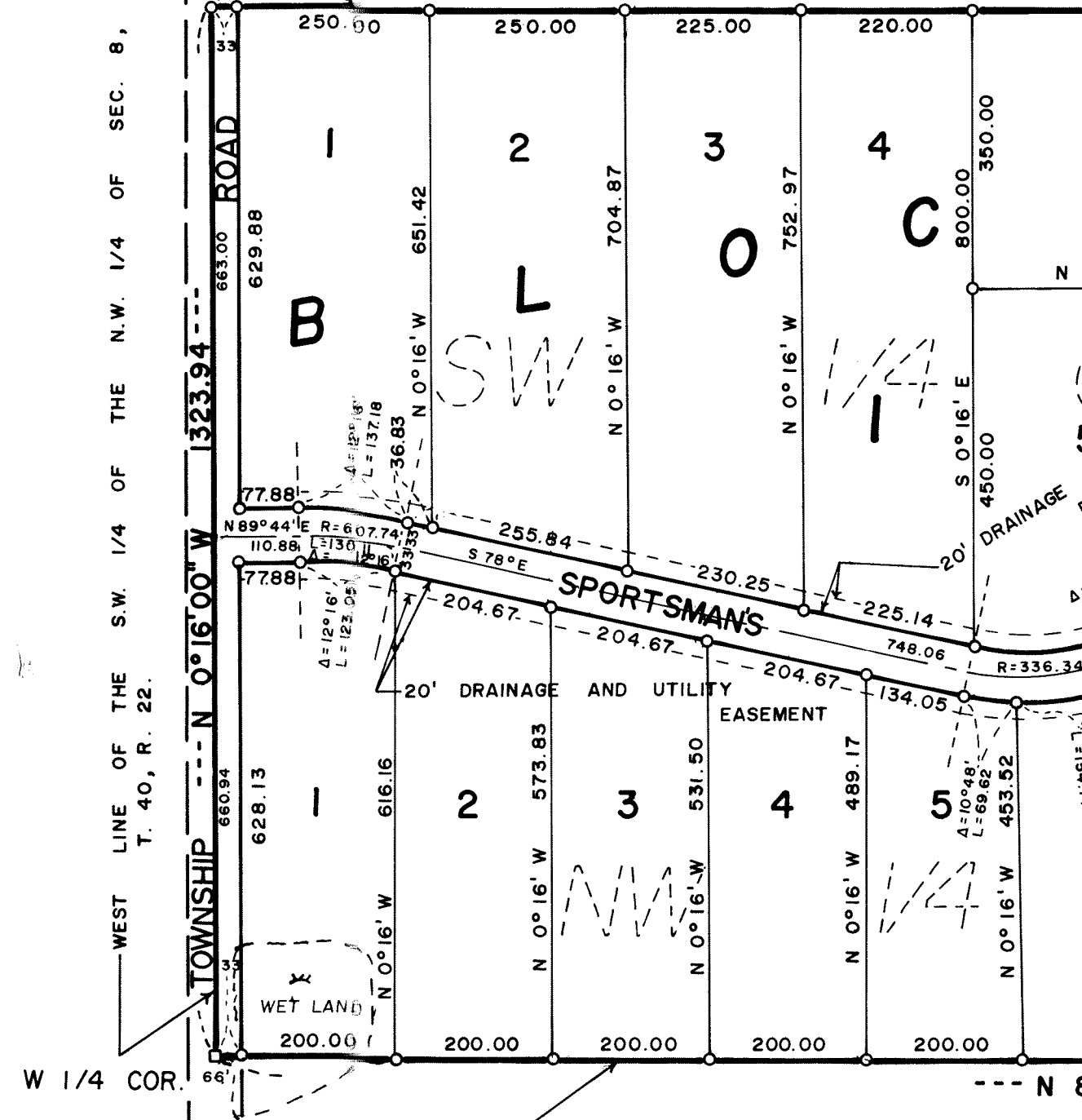


THIS PLAT WAS PREPARED BY M.B. RUDE LAND SURVEYORS

NORTH LINE OF THE N.E. 1/4 OF THE N.W. 1/4 OF SEC. 8, T. 40, R. 22. N 1/4 COR.



NORTH LINE OF THE S.W. 1/4 OF THE N.W. 1/4 OF SEC. 8, T. 40, R. 22.



KNOW ALL MEN BY THESE PRESENTS: That Dennis Frandsen and Company, Inc., a Minnesota Corporation, owner and proprietor of the following described property situate in the County of Pine, State of Minnesota, to-wit:

The East Half of the Northwest Quarter and the Southwest Quarter of the Northwest Quarter of Section 8, Township 40, Range 22, Pine County, Minnesota.

Have caused the same to be surveyed and platted as SPORTSMAN'S RETREAT, and do hereby donate and dedicate to the public for public use forever the roads and the drainage and utility easements as shown on this plat.

In witness whereof, Dennis Frandsen and Company, Inc., a Minnesota Corporation, has caused these presents to be signed by its proper officers and its corporate seal to be hereunto affixed this 17th day of July A.D., 19 79.

SIGNED

DENNIS FRANSDEN AND COMPANY, INC.

Dennis Frandsen its President and Debra A. Jacobson its Secretary

State of Minnesota The foregoing instrument was acknowledged before me this 17th day of July A.D., 19 79, by Dennis Frandsen and Debra A. Jacobson of the Dennis Frandsen and Company, Inc., a Minnesota Corporation, on behalf of the corporation.



Susan K. Griffin
Notary Public, Chisago County, Minnesota
My Commission Expires August 24, 1985

I hereby certify that I have surveyed the property described on this plat as SPORTSMAN'S RETREAT; That this plat is a correct representation of said survey; That all distances are correctly shown in feet and decimals of a foot; That all monuments have been correctly placed in the ground as shown; That the outside boundary lines are correctly designated; That there are no wet lands or public highways to be designated on the plat other than as shown thereon.

Morrell B. Rude
Morrell B. Rude
Land Surveyor Minnesota Registration No. 8195

State of Minnesota This Surveyors Certificate was subscribed and sworn to before me, a Notary Public, County of Pine this 16th day of July A.D., 19 79, by Morrell B. Rude, Land Surveyor.

Rosemarie Rude
Notary Public, Pine County, Minnesota
My Commission Expires September 22, 1979

The plat of SPORTSMAN'S RETREAT was accepted and approved by the County Board of Pine County, Minnesota, at a regular meeting thereof, held this 7 day of August A.D., 19 79.

COUNTY BOARD OF PINE COUNTY:

By: Lawrence J. Perreault Chairman By: Lawrence J. Perreault Auditor

The Plat was approved as to form and execution on this 7th day of August A.D., 19 79.

Thomas Keison
County Attorney, Pine County, Minnesota

I hereby certify that the taxes for all prior years on the property described herein are paid.

Lawrence J. Perreault
County Auditor, Pine County, Minnesota

I hereby certify that the plat of SPORTSMAN'S RETREAT was filed in this office on the 9 day of August A.D., 19 79, at 10 O'clock A. M., Micro Number 260902.

Arnie Bible
Register of Deeds, Pine County, Minnesota

I hereby certify that the taxes for the year 1979 on the property described herein are paid.

Russell Schuch
County Treasurer, Pine County, Minnesota