

THE WOODS SHORELINE

PART OF GOVERNMENT LOT 3, SECTION 23, TOWNSHIP 39 NORTH, RANGE 22 WEST, PINE COUNTY, MINNESOTA

POKAGAMA TOWNSHIP
PINE COUNTY, MN

- LEGEND.**
- ⊙ DENOTES RECORDED PINE COUNTY MONUMENT
 - DENOTES 1/2" IRON PIPE FOUND, MARKED RUDE 8195
 - DENOTES 1/2" X 14" REBAR SET, MARKED KROSCHER 44490
 - DENOTES 1/2" X 14" REBAR SET WITHIN ONE YEAR OF RECORDING OF THIS PLAT
 - DENOTES WET LAND
 - DENOTES DRAINAGE DITCH

W 1/4 CORNER OF SECTION 23, T39, R22

SECTION 23, T39, R22

SECTION 23, T39, R22

SECTION 23, T39, R22

SECTION 23, T39, R22

SECTION 23, T39, R22

SECTION 23, T39, R22

SECTION 23, T39, R22

SECTION 23, T39, R22

SECTION 23, T39, R22

SECTION 23, T39, R22

SECTION 23, T39, R22

SECTION 23, T39, R22

SECTION 23, T39, R22

SECTION 23, T39, R22

SECTION 23, T39, R22

SECTION 23, T39, R22

SECTION 23, T39, R22

SECTION 23, T39, R22

SECTION 23, T39, R22

SECTION 23, T39, R22

SECTION 23, T39, R22

SECTION 23, T39, R22

SECTION 23, T39, R22

SECTION 23, T39, R22

SECTION 23, T39, R22

SECTION 23, T39, R22

SECTION 23, T39, R22

SECTION 23, T39, R22

SECTION 23, T39, R22

SECTION 23, T39, R22

SECTION 23, T39, R22

SECTION 23, T39, R22

SECTION 23, T39, R22

SECTION 23, T39, R22

SECTION 23, T39, R22

SECTION 23, T39, R22

SECTION 23, T39, R22

SECTION 23, T39, R22

SECTION 23, T39, R22

SECTION 23, T39, R22

SECTION 23, T39, R22

SECTION 23, T39, R22

SECTION 23, T39, R22

SECTION 23, T39, R22

SECTION 23, T39, R22

SECTION 23, T39, R22

SECTION 23, T39, R22

SECTION 23, T39, R22

SECTION 23, T39, R22

SECTION 23, T39, R22

SECTION 23, T39, R22

SECTION 23, T39, R22

SECTION 23, T39, R22

SECTION 23, T39, R22

SECTION 23, T39, R22

SECTION 23, T39, R22

SECTION 23, T39, R22

SECTION 23, T39, R22

SECTION 23, T39, R22

SECTION 23, T39, R22

SECTION 23, T39, R22

SECTION 23, T39, R22

SECTION 23, T39, R22

SECTION 23, T39, R22

SECTION 23, T39, R22

SECTION 23, T39, R22

SECTION 23, T39, R22

SECTION 23, T39, R22

SECTION 23, T39, R22

SECTION 23, T39, R22

SECTION 23, T39, R22

SECTION 23, T39, R22

SECTION 23, T39, R22

SECTION 23, T39, R22

SECTION 23, T39, R22

SECTION 23, T39, R22

SECTION 23, T39, R22

SECTION 23, T39, R22

SECTION 23, T39, R22

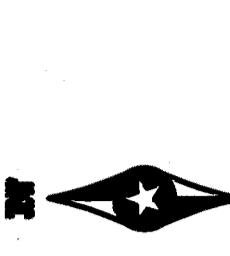
SECTION 23, T39, R22

SECTION 23, T39, R22

SECTION 23, T39, R22

SECTION 23, T39, R22

SECTION 23, T39, R22



NOTE: BEARINGS SHOWN ARE ASSUMED



Scale: 1 inch = 60 Feet

Benchmark:
TOP OF RIM OF SANITARY MANHOLE 3-14
ELEV: 953.81 FEET (NAVD 88)

W 1/4 CORNER OF SECTION 23, T39, R22

SECTION 23, T39, R22

SECTION 23, T39, R22

SECTION 23, T39, R22

SECTION 23, T39, R22

SECTION 23, T39, R22

SECTION 23, T39, R22

SECTION 23, T39, R22

SECTION 23, T39, R22

SECTION 23, T39, R22

SECTION 23, T39, R22

SECTION 23, T39, R22

SECTION 23, T39, R22

SECTION 23, T39, R22

SECTION 23, T39, R22

SECTION 23, T39, R22

SECTION 23, T39, R22

SECTION 23, T39, R22

SECTION 23, T39, R22

SECTION 23, T39, R22

SECTION 23, T39, R22

SECTION 23, T39, R22

SECTION 23, T39, R22

SECTION 23, T39, R22

SECTION 23, T39, R22

SECTION 23, T39, R22

SECTION 23, T39, R22

SECTION 23, T39, R22

SECTION 23, T39, R22

SECTION 23, T39, R22

SECTION 23, T39, R22

SECTION 23, T39, R22

SECTION 23, T39, R22

SECTION 23, T39, R22

SECTION 23, T39, R22

SECTION 23, T39, R22

SECTION 23, T39, R22

SECTION 23, T39, R22

KNOW ALL MEN BY THESE PRESENTS: That Landmaster Holdings LLC, a Limited Liability Company, the owner of the following described property situated in the County of Pine, State of Minnesota, to wit:

That part of Government Lot 3, Section 23, Township 39, Range 22, Pine County, Minnesota, described as follows:

Commencing at the South Quarter corner of said Section 23; thence on an assumed bearing of East along the south line of said Section 23 a distance of 83.86 feet; thence on a bearing of North 137° 0' feet; thence on a bearing of East 88.0 feet; thence on a bearing of North 7.0 feet to the point of beginning of the property to be described; thence on a bearing of South 7.0 feet; thence on a bearing of West 66.0 feet; thence on a bearing of North 564.34 feet; thence North 23 degrees 02' minutes West, 388.09 feet; thence North 40 degrees 38' minutes West, 427.40 feet; thence North 50 degrees 30' minutes West, 398.09 feet; thence North 50 degrees 30' minutes West, 427.40 feet to the shore line of Lake Pokegama; thence along said shore line to the intersection with a line that bears East from the point of beginning; thence on a bearing of West 207 feet, more or less, to the point of beginning.

I, the undersigned, do hereby certify that the foregoing is a true and correct copy of the original plat as shown on this plat for drainage & utility purposes only.

In witness whereof, Landmaster Holdings LLC, a Limited Liability Company, has caused the same to be signed by its proper officers this 13 day of October, 2017.

Jacob C. Kruse
Jacob C. Kruse, Manager

STATE OF MINNESOTA)
COUNTY OF PINE)

The foregoing instrument by Jacob C. Kruse, Manager of Landmaster Holdings LLC, a Limited Liability Company, on behalf of the Company was acknowledged before me this 13 day of October, 2017.

Dawn J. Gibb
Dawn J. Gibb
Notary Public, KOTA BEC County, Minnesota
My Commission Expires JANUARY 31, 2020

STATE OF MINNESOTA)
COUNTY OF PINE)

I, the undersigned, do hereby certify that the foregoing is a true and correct copy of the original plat as shown on this plat for drainage & utility purposes only.

In witness whereof, Landmaster Holdings LLC, a Limited Liability Company, has caused the same to be signed by its proper officers this 13 day of October, 2017.

Dawn J. Gibb
Dawn J. Gibb
Notary Public, KOTA BEC County, Minnesota
My Commission Expires JANUARY 31, 2020

STATE OF MINNESOTA)
COUNTY OF PINE)

The foregoing instrument by Dennis H. Jensen, Manager of Landmaster Holdings LLC, a Limited Liability Company, on behalf of the Company was acknowledged before me this 12 day of October, 2017, by Tyler I. Kroschel, Land Surveyor, Minnesota License No. 44490.

Tyler I. Kroschel
Tyler I. Kroschel, Land Surveyor
Minnesota License No. 44490

Cary B. Witzman
Cary B. Witzman
Notary Public, PINE County, Minnesota
My Commission Expires JANUARY 31, 2024

Approved by the Board of Supervisors of the Township of Pokegama, Pine County, Minnesota, this 14 day of October, 2017, and is in compliance with the provisions of Chapter 506.03, Subdivision 2, Minnesota Statutes and except LINDEN AVENUE as a township road.

D. Dettelblander
D. Dettelblander, Board Chairman

John J. Dettelblander
John J. Dettelblander, Board Chairman

Pursuant to Minnesota Statutes, Section 272.12, no delinquent taxes and transfer entered this 13 day of October, 2017.

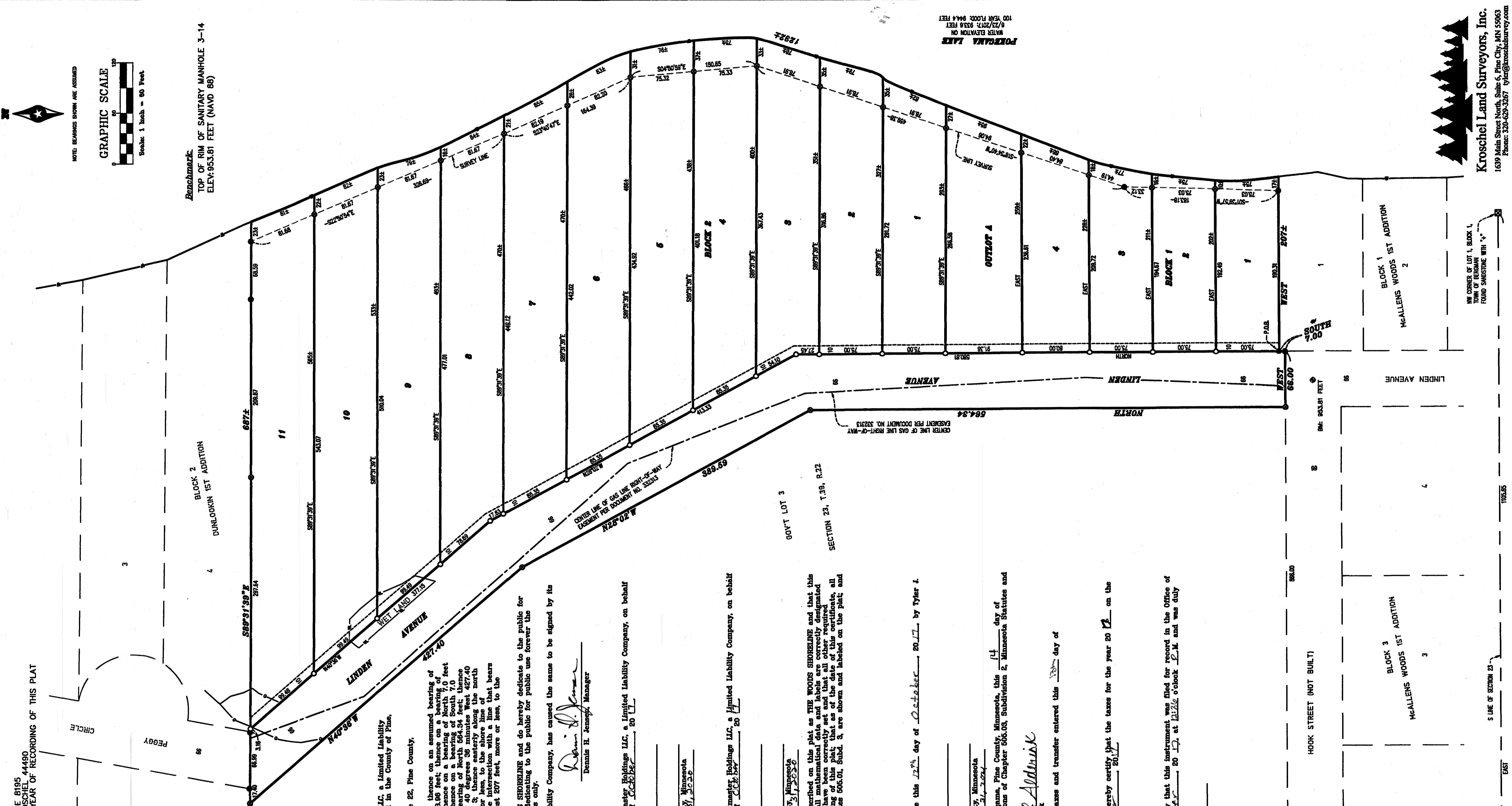
John J. Dettelblander
John J. Dettelblander, Board Chairman

Pursuant to Minnesota Statutes, Section 506.04, I hereby certify that the taxes for the year 2017 on the property described herein are paid this 13 day of October, 2017.

Cathy Steiner
Cathy Steiner, County Treasurer

Document No. 5340411
Pursuant to Minnesota Statutes, Section 506.04, I hereby certify that this instrument was filed for record in the Office of the County Recorder for record on this 13 day of October, 2017, at 12:22 o'clock P.M. and was duly recorded in Pine County Records.

Keely Skupski
Keely Skupski, County Recorder



Kroschel Land Surveyors, Inc.
1639 Main Street North, Suite 6, Pine City, MN 55063
Phone: 320-629-3267 tyler@kroschelsurvey.com

1/4 CORNER OF SECTION 23, T39, R22

EAST

S LINE OF SECTION 23

SW CORNER OF LOT 1, BLOCK 1, McALLENS WOODS 1ST ADDITION

10625

Official Plat