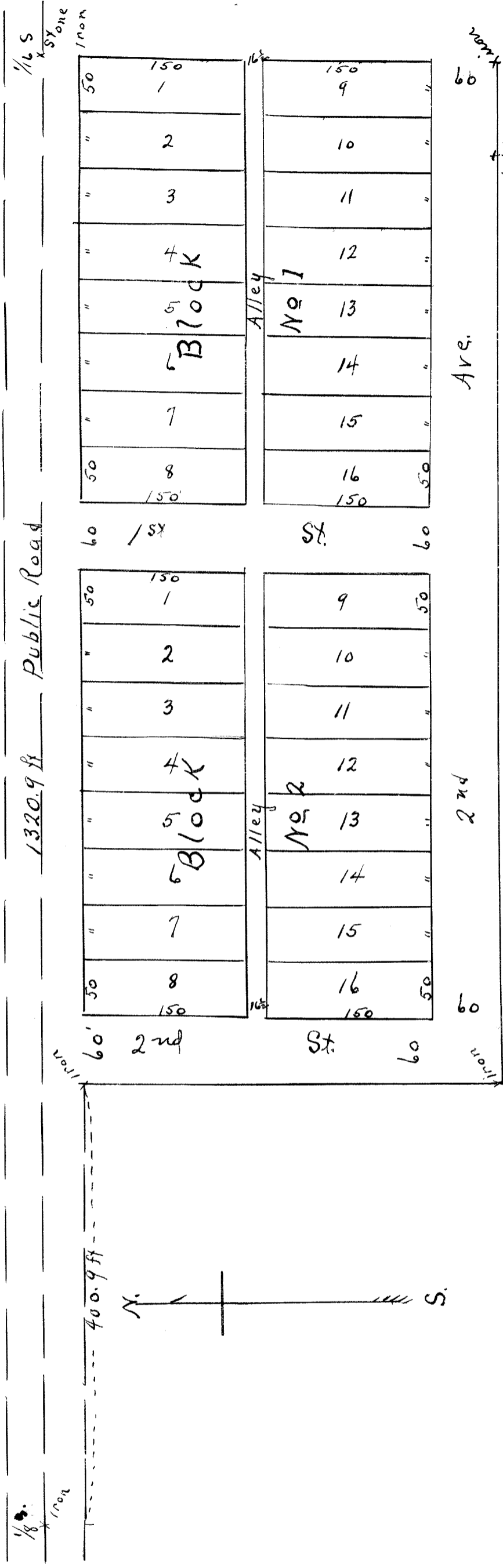


TREVIA SUIS
HUFFMAN'S 1st ADDITION TO CORNELL
PINE COUNTY, MINN.

Scale - 100 ft = 1 inch.



I hereby certify that all distances are correctly shown on the plat in feet and decimals of feet, that all monuments have been correctly placed in the ground as shown on plat and that the outside boundary lines are correctly designated on the plat. I also hereby certify that the above plat is a true copy of survey made by me under the direction of Byron Huffman and Lucy Huffman his wife owners and proprietors of the SW 1/4 of Sec. 17 T39 R22, that they have caused a portion of this tract to be platted into blocks, streets and alleys, to be hereafter known as Trevia Suis Huffman's 1st Addition to Cornell and described as follows: Commencing at the N 1/2 cor. on west line of Sec. 17 T39 R22 thence east 400.9 ft. to place of beginning, thence east 920 ft. to NW 1/4 cor. thence south 409.5 ft. thence west 920 ft. thence north 409.5 ft. to place of beginning, and that there are no wet lands.

May 20-1914.

John Buckley, County Surveyor.

I do hereby certify that the within plat of Trevia Suis Huffman's 1st Addition to Cornell was duly submitted to the Board of County Commissioners of Pine County, Minnesota this 7th day of December A.D. 1914, and the same was approved by resolution duly adopted by said Board.

(A. Division Seal)

Robt. Derr,

Chairman of County Board

81330.

Office of Register of Deeds, County of Pine, Minn.
I hereby certify that the within instrument was filed in this office for record on the 21st day of Dec. A.D. 1914, at 11 o'clock A.M. and was duly recorded in Book of Deeds page 6.

James H. Handel, Register of Deeds.

The Byron Huffman and Lucy Huffman his wife of Pine County, Minnesota, owners of the SW 1/4 of the NW 1/4 of Sec. 17 T39 R22, hereby certify to having caused a portion of the same to be platted as Trevia Suis Huffman's 1st Addition to Cornell, as shown and described above. And we do hereby give and dedicate to the public and for the public use forever all streets, roads and alleys laid out and designated on this plat. All lots in Block Nos 1 & 2 are private property to be held or disposed of by the proprietors.

Witness our hands and seal this 12 day of August A. D. 1914.

In presence of
Mesta Dyson
C. A. Peterson.

Byron Huffman
Lucy H. Huffman

State of Minn. } ss.

County of Pine } On this 12. day of Aug. 1914 personally came before me, Byron Huffman and Lucy H. Huffman his wife to me known to be the persons described in and who executed the foregoing certificate and acknowledged that they executed the same by their free act & deed.

(Notarial Seal)

Chas. A. Peterson, Notary Public
Pine County, Minn.
My commission expired May 22-1918.
X 1/2 - Stone.

I hereby certify that taxes for the year 1913 on lands described within are paid.

Frank Coffey, County Treasurer.

Taxes paid and transfer entered this 21st day of December 1914.

W. H. Hamlin, County Auditor.