

# WILLOW RIVER RECREATION ACRES

KNOW ALL MEN BY THESE PRESENTS: That First Guaranty Venture Corporation, a Minnesota corporation, owner and proprietor of the following described property situate in the County of Pine, State of Minnesota, to-wit:

That part of the Southeast Quarter of Section 18 Township 44 Range 21 lying Easterly and Southerly of the following described line: Commencing at the Southwest corner of said Southeast Quarter; thence North 0 degrees 03 minutes 30 seconds East assumed bearing along the West line of said Southeast Quarter a distance of 790.01 feet to the actual point of beginning of the line to be described; thence North 44 degrees 31 minutes 04 seconds East 884.14 feet; thence North 35 degrees 59 minutes 10 seconds East 945.38 feet; thence North 89 degrees 35 minutes 14 seconds East 500.00 feet; thence North 0 degrees 14 minutes 35 seconds East 472.55 feet to a point on the North line of said Southeast Quarter bearing South 89 degrees 27 minutes 53 seconds West and distant 973.03 feet from the Northeast corner thereof and there terminating.

Have caused the same to be surveyed and platted as WILLOW RIVER RECREATION ACRES, and do hereby donate and dedicate to the public for public use forever the roads and the drainage easement as shown on this plat.

In witness whereof, First Guaranty Venture Corporation, a Minnesota corporation which has no Corporate seal, has caused these presents to be signed by its proper officers this 3rd day of February A.D., 1981.

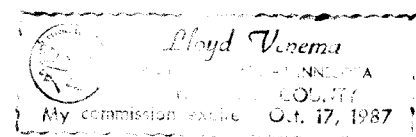
S I G N E D

FIRST GUARANTY VENTURE CORPORATION

Joseph J. Omiza its President and Joseph E. Champion its secretary

State of Minnesota County of Hennepin The foregoing instrument was acknowledged before me this 3rd day of February A.D., 1981, by Joseph J. Omiza and Joseph E. Champion of the First Guaranty Venture Corporation, a Minnesota corporation, on behalf of the corporation.

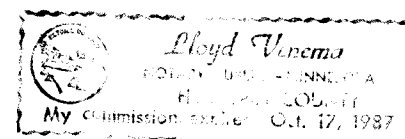
Lloyd Veerna  
Notary Public, Hennepin County Minnesota  
My Commission Expires Oct 17, 1987



I hereby certify that I have surveyed the property described on this plat as WILLOW RIVER RECREATION ACRES; that this plat is a correct representation of said survey that all distances are correctly shown in feet and decimals of a foot that all monuments have been correctly placed in the ground as shown; that the outside boundary lines are correctly designated; that there are no wet lands or public highways to be designated on the plat other than as shown thereon.

Harry S. Johnson  
Harry S. Johnson  
Land Surveyor Minnesota Registration No. 50 65

State of Minnesota County of Hennepin This Surveyors Certificate was subscribed and sworn to before me, a Notary Public, this 3rd day of February A.D., 1981, by Harry S. Johnson, Land Surveyor.



Lloyd Veerna  
Notary Public, Hennepin County, Minnesota  
My Commission Expires Oct 17, 1987

I hereby certify that the taxes for the year 1981 on the property described herein are paid.

Ronald L. Lott  
County Treasurer, Pine County, Minnesota

I hereby certify that the taxes for all prior years on the property described herein are paid.

Lawrence D. Bureault  
County Auditor, Pine County, Minnesota

The plat was approved as to form and execution on this 4 day of February A.D., 1981.

John K. O'Brien  
County Attorney, Pine County, Minnesota

The plat of WILLOW RIVER RECREATION ACRES was accepted and approved by the County Board of Pine County, Minnesota at a regular meeting thereof, held this 4 day of February A.D., 1981.

COUNTY BOARD OF PINE COUNTY

By: James Youngbauer Chairman By: Lawrence D. Bureault Auditor

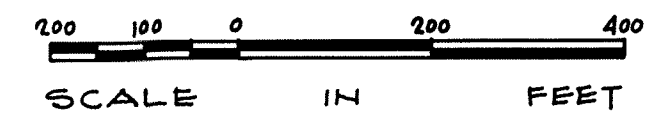
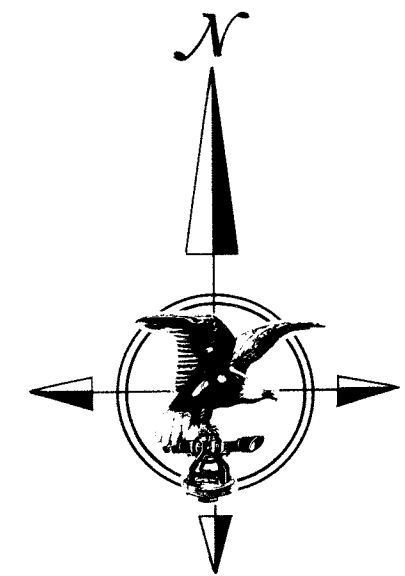
I hereby certify that the plat of WILLOW RIVER RECREATION ACRES was filed in this office on the 4 day of February A.D., 1981, at 10 o'clock A.M., Micro Number 267666.

Oris Bible  
County Recorder, Pine County, Minnesota



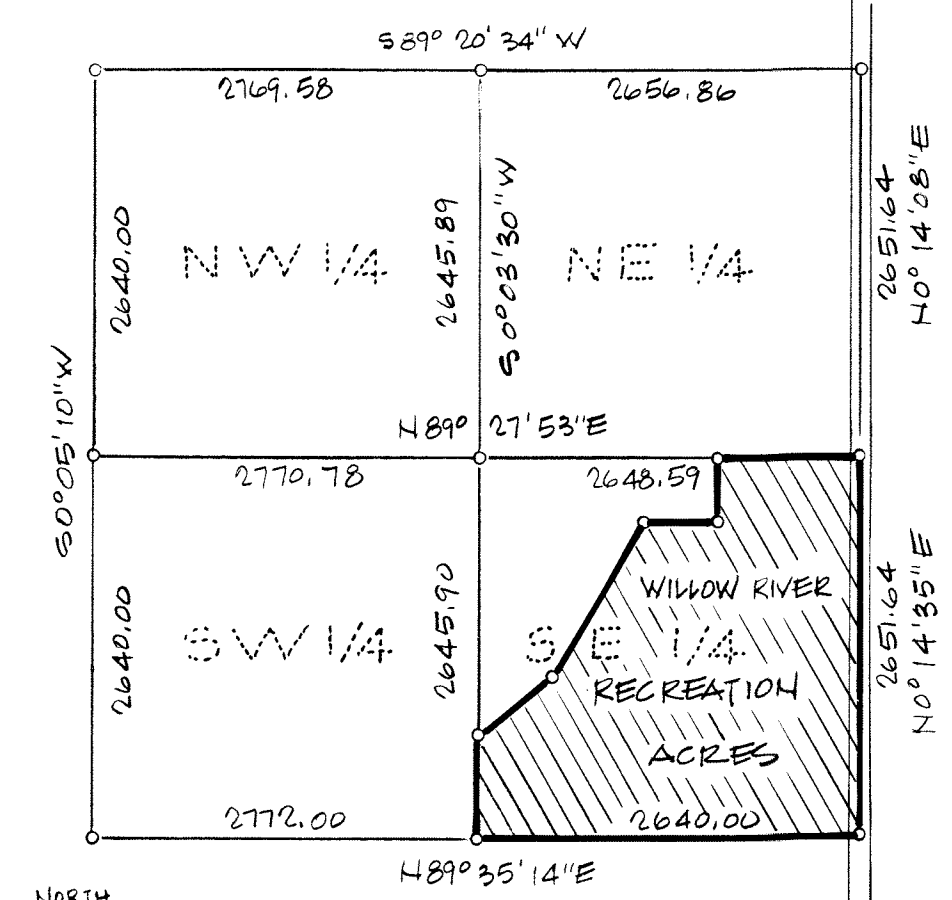
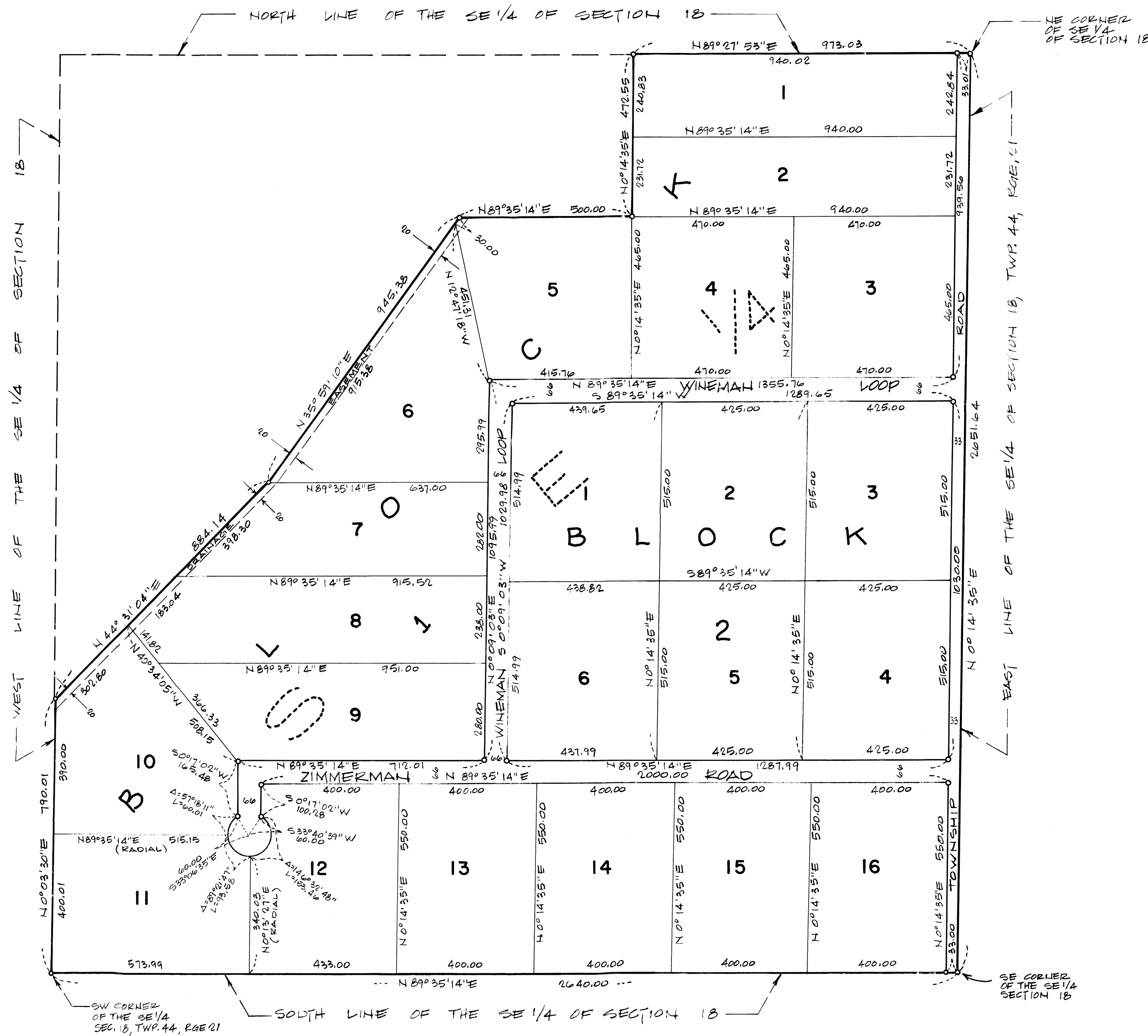
HARRY S. JOHNSON  
LAND SURVEYORS INC.

# WILLOW RIVER RECREATION ACRES



○ DENOTES 1/2" IRON PIPE WITH PLASTIC CAP MARKED BY R.L.S. NO. 5065

THE EAST LINE OF SECTION 18, TOWNSHIP 44, RANGE 21, IS ASSUMED TO HAVE A BEARING OF NORTH 0 DEGREES 14 MINUTES 35 SECONDS EAST



VICINITY MAP  
SECTION 18, TOWNSHIP 44, RANGE 21  
NOT TO SCALE

