

PART OF THE
WILLOW RIVER
PLAT OF
MILWAUKEE COUNTY, WISCONSIN

SCALE 20 FEET TO AN INCH

Map of the Willow River Plat, showing the location of the Willow River, the St. Paul & Duluth Railroad, and the various blocks and streets of the plat.

Witness my hand and seal of office this 15th day of March, 1857.

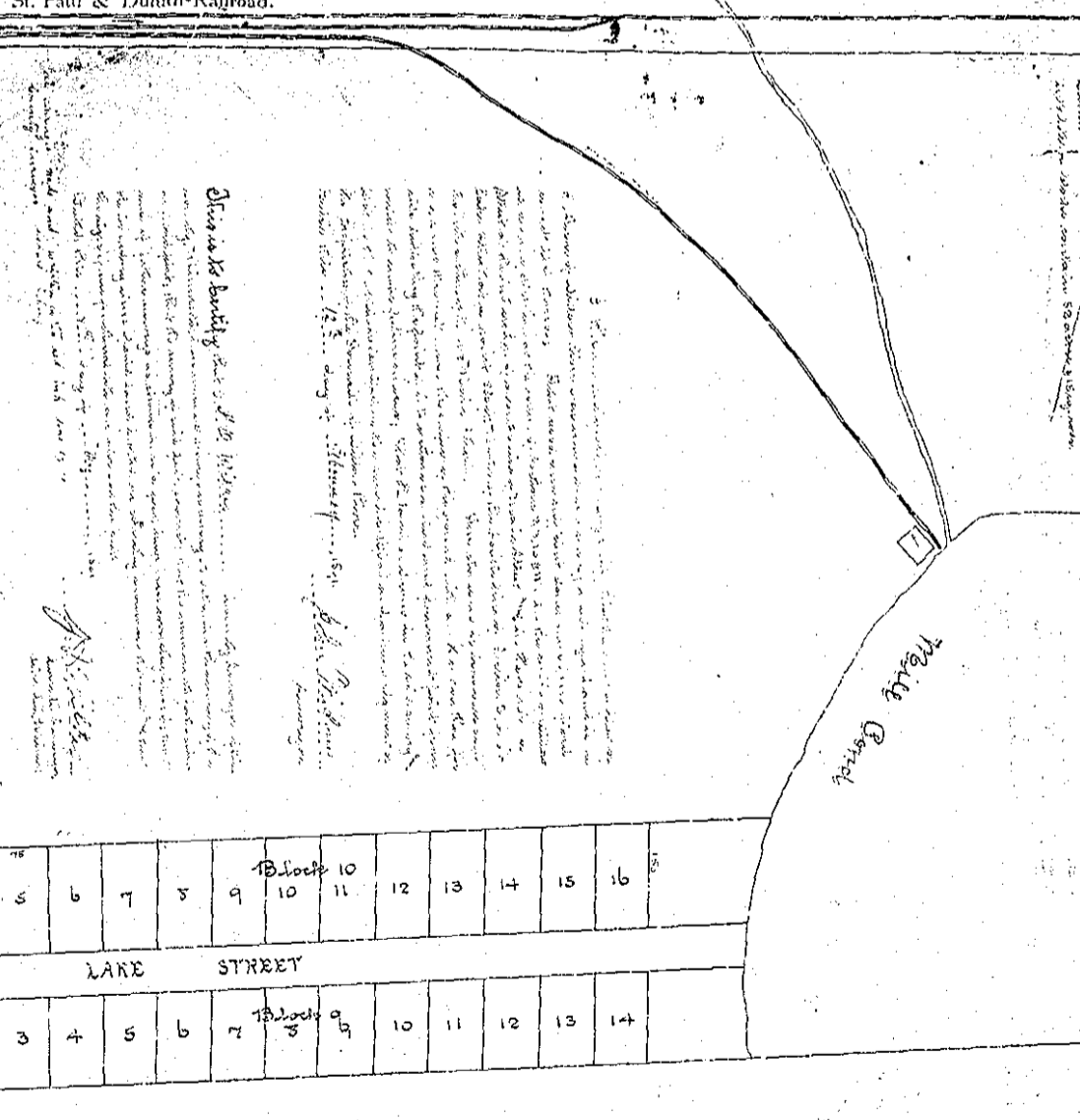
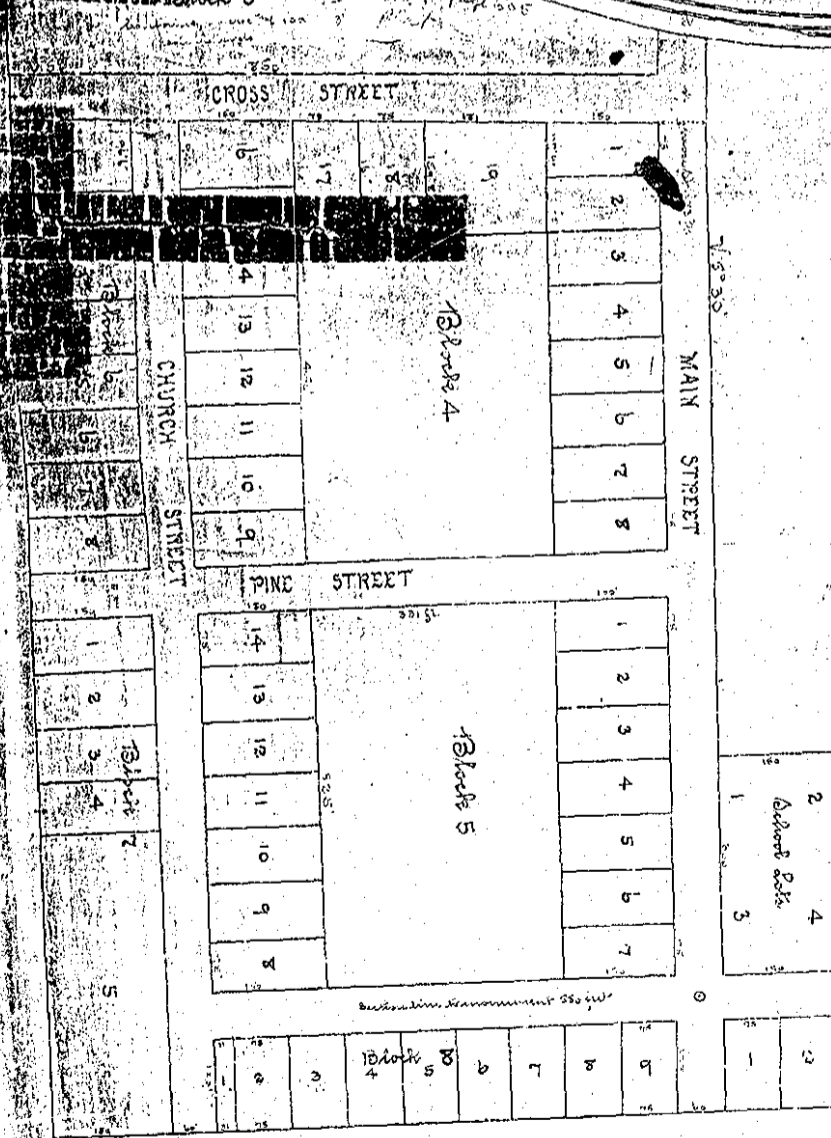
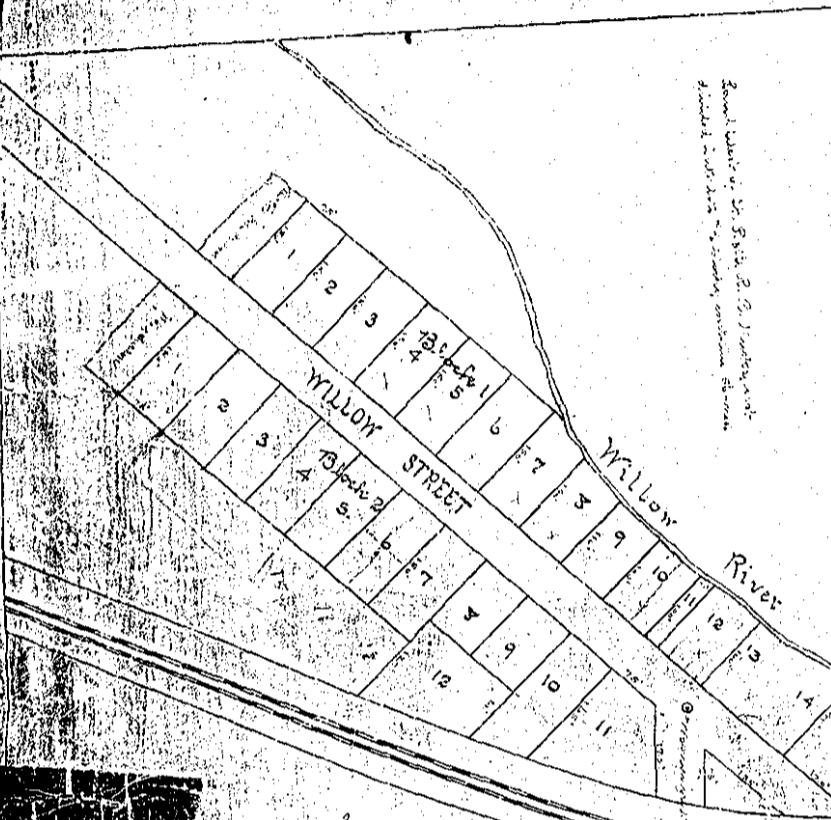
Notary Public for the State of Wisconsin

Joseph L. Johnson

Witness my hand and seal of office this 15th day of March, 1857.

Notary Public for the State of Wisconsin

George H. Johnson



Witness my hand and seal of office this 15th day of March, 1857.

Notary Public for the State of Wisconsin

George H. Johnson

Witness my hand and seal of office this 15th day of March, 1857.

Notary Public for the State of Wisconsin

Joseph L. Johnson

